

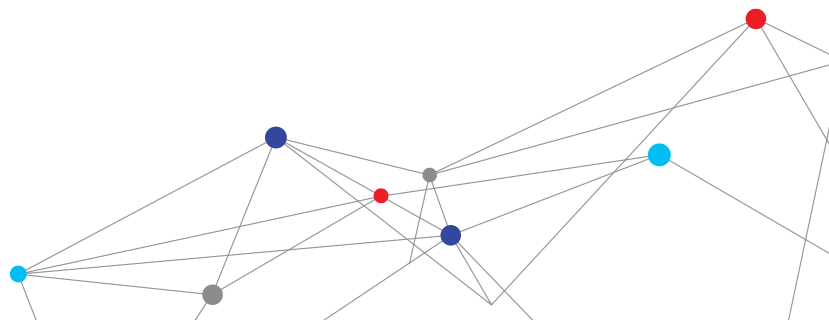
# SOUND DETECTOR SD-200

The TSI Quest™ Sound Detector SD-200 is a compact, lightweight sound level meter designed for measurement of workplace noise levels. Its intuitive design makes it easy for users to measure sound levels and helps users determine the attenuation of hearing protection that may be required. The integrating feature computes the average sound pressure level, for more accurate assessment of the intermittent sound levels.




## Features and Benefits

- + Intuitive interface for easy out-of-the-box operation
- + Averaging functionality provides steadier readings in environments where noise levels are highly variable
- + Visual LED alerts help users assess the need for hearing protection
- + Meets applicable ANSI and IEC Class 2 standards
- + Rechargeable battery helps lower total cost of ownership compared to sound level meters that use replaceable batteries



# SPECIFICATIONS

## SOUND DETECTOR SD-200

Size	6.5" x 2.4" x .9" (16.5 cm x 6.1 cm x 2.3 cm)
Weight	4.4 oz (125 g) approx.
Tripod Mount	Accepts a ¼" - 20 screw (located on bottom, backside of the instrument)
Housing	ABS/polycarbonate
Battery	Lithium polymer (1000 mAh), rechargeable Run-Time: 50+ hours without LEDs activated Low battery indicator
Microphone	Omni-directional; Class/Type 2; ½" diameter, electret condenser
Display Digits	¾" (2 cm) with 0.1 dB resolution and 0.5 sec. update rate
Keypad	5 keys including: F/S, A/C, Mode, Run/Stop and Power On/Off
Charging	USB cable is provided to charge the instrument with a computer
Standards	ANSI S1.4 1983 (R 2006) A NSI S1.43 1997(R 2007) IEC 61672-1 (2002) IEC 61010-1 (2010) 

### Measurements

Displayed Data and Status Indicators	Sound Pressure Level (SPL), Average value ( $L_{EQ}/L_{AVG}$ ), LED Alert (with Hearing Protection icon), Maximum value (MAX), Minimum value (MIN), Run-Time, Overload (OL), and Under-Range (UR)
Linearity Range	45 to 130 dB (Dynamic Range)
Weighting	A or C
Time Response	Fast or Slow
Exchange Rate (ER)	3 dB or 5 dB

### Temperature Ranges

Operating Temperature	32 °F to 104 °F (0 °C to 40 °C)
Operating Atm. Pressure	80 -110 kPa
Relative Humidity	0%- 90%, non-condensing
Storage Temperature	-4 °F to 158 °F (-20 °C to 70 °C)
Storage Atm. Pressure	50-150 kPa

Specifications are subject to change without notice.

Quest is a trademark, and TSI and the TSI logo are registered trademarks of TSI Incorporated.



TSI Incorporated - Visit our website [www.tsi.com](http://www.tsi.com) for more information.

<b>USA</b>	<b>Tel:</b> +1 800 874 2811	<b>India</b>	<b>Tel:</b> +91 80 67877200
<b>UK</b>	<b>Tel:</b> +44 149 4 459200	<b>China</b>	<b>Tel:</b> +86 10 8219 7688
<b>France</b>	<b>Tel:</b> +33 1 41 19 21 99	<b>Singapore</b>	<b>Tel:</b> +65 6595 6388
<b>Germany</b>	<b>Tel:</b> +49 241 523030		



### User-Friendly

- + Simple four-button navigation to perform all functions
- + Comes ready to take measurements; no configuration necessary

### Industry Compliant

- + Meets applicable ANSI and IEC Class 2 standards
- + Consistent performance with accurate, actionable readings

### Average Sound Pressure Level ( $L_{EQ}/L_{AVG}$ )

- + Integrating feature computes the average sound pressure level
- + Provides stable readings where noise levels typically vary, for easier interpretation

### LED alerts

- + Tri color LED's flash brightly when preset noise levels are reached
- + Helps user understand where hearing protection may need to be worn
- + Green LED flashes when noise measurements are between 80 and 85 dB
- + Yellow LED flashes when noise measurements are between 85 and 105 dB
- + Red LED flashes when noise measurements are above 105 dB

### Rechargeable

- + Lithium polymer battery provides up to 50 hours of use between charges
- + Reduces the cost and hassle of replaceable batteries