

LOGDAT™ MOBILE REMOTE READER/DATA LOGGER ANDROID APP AND CAPTURE HOOD STAND FOR USE WITH THE MODEL 8380 ACCUBALANCE® AIR CAPTURE HOOD

APPLICATION NOTE TSI-157 (US)

LogDat™ Mobile Remote Reader and Data Logger Android App, the newest addition to the Model 8380 AccuBalance Air Capture Hood system, is used to improve productivity and enhance reporting capabilities. Utilizing wireless Bluetooth technology with a user-friendly interface and multiple customizable features, this app for Android-based smartphones and tablets is the ideal accessory to boost your efficiency.

The app communicates with the Model 8380 remotely up to 100 ft. (30.5 m) away and displays sample data in real-time. Measurement data, such as flow and temperature, can be stored as local Test IDs. Use the app to remotely read and save data as well as take pictures, record voice notes, view statistics and generate graphical models. Export results and attachments to an SD card, Gmail or Google Drive for quick and effortless report generation.

LogDat™ Mobile is ideally suited to simplify the balancing process when the Model 8380 AccuBalance Air Capture Hood is used with the optional hood stand.



LogDat Mobile Features

- Display measurements in real-time
 - One primary measurement
 - Up to four secondary measurements
- Customizable analog meter to help visualize primary measurement
- Save data into local Test IDs
 - Attach photos, voice and text notes to individual Test ID
- View Test ID sample data
 - Individual samples and statistics
 - Custom name configuration
- Graphing capability



Applicable Android Devices Supporting LogDat Mobile

- Android based Smartphones Operating Systems 2.3.3 or newer
- Tablets
 - Nexus 7/Nexus 10
 - Motorola Xoom

Acquiring LogDat Mobile

- LogDat Mobile can be purchased and downloaded through [Google play](https://play.google.com/store/apps/details?id=com.logdat).

To use LogDat™ Mobile, it will be necessary to pair the Model 8380 instrument to the Android device, follow the steps detailed below.



Model 8380 Instrument Setup

Configure Model 8380 Bluetooth Functions (Figure 1).

1. Turn **ON** the Model 8380 instrument.
 - a) Note the serial number that appears on the startup screen.
2. Press **Menu** button.
 - a) Scroll down to **Bluetooth Functions** and press **Enter**.
 - b) Scroll down to **Discoverability** and set to **Enable**.
 - c) Note **PIN code** (default is set to **0000**).

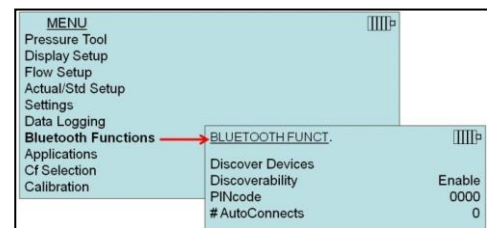


Figure 1. Model 8380 Bluetooth Functions Menu

Android Device Setup

1. Turn **ON** the Android Device
 - a) Go to **Settings**
 - b) Select **Bluetooth**
 - c) Turn Bluetooth **ON**
 - d) Select **“Scan for Devices”**
 - e) Select the serial number of the Model 8380 on the list of devices that appears (Figure 2).

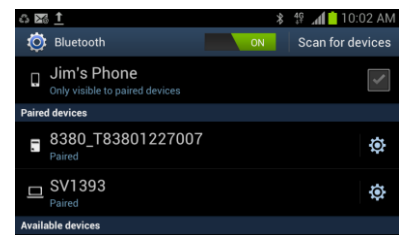


Figure 2. Scanned Devices

NOTE: The Model 8380 instrument must be in the main running screen in order to communicate with the Android device

2. Enter Model 8380 Pin Code for Bluetooth Pairing Request (Figure 3).
 - a) Appears when Android device attempts to pair with Model 8380 instrument.
 - b) Enter **0000** as the pin code and press **OK**.
3. Your device should now be paired to the Model 8380.
 - a) The Model 8380 will now have the Bluetooth icon displayed on the main running screen.

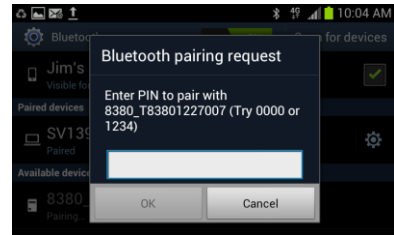



Figure 3. Bluetooth Pairing Request

Installing LogDat Mobile

1. Load LogDat Mobile onto the Android device.
2. Turn on the Model 8380 instrument.

NOTE: The Model 8380 instrument must be in the main running screen in order to communicate with the Android device.

3. Activate LogDat Mobile by selecting the icon.
 - a) The Device will show **“Connecting”**. 
4. The device will then ask for **“Bluetooth pairing request.”** See Figure 3.
 - a) Enter **0000**, press **OK**.
 - b) The Model 8380 will now have the Bluetooth icon displayed on the main running screen.
 - c) Once **“Connected,”** LogDat Mobile can be utilized and will appear (Figure 4).

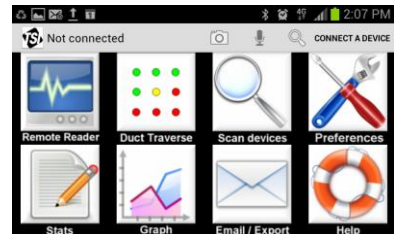


Figure 4. LogDat Mobile Main Screen

When LogDat Mobile is successfully paired with the Model 8380 and is activated, it will communicate to the Model 8380 to detect what type of probe is connected along with the Model 8380 instrument settings (i.e. metric or imperial units of measurement).

A popup display will appear after a few seconds (Figure 5). At this point, the user can set the primary measurement type and up to four secondary measurements. Imperial or metric units of measurement are determined by the Model 8380 instrument settings.

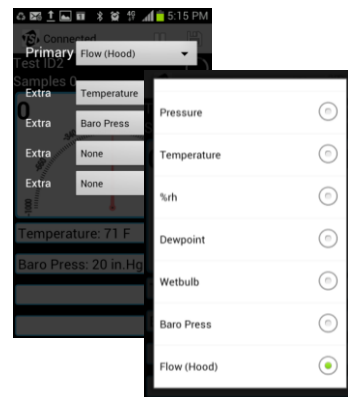


Figure 5. Primary and Secondary Measurement Selection

Using LogDat Mobile – Remote Reader

The Remote Reader (Figure 6) displays one primary and up to four secondary measurements continuously in real-time. It features a customizable analog meter to help visualize the primary measurement along with multiple ways to take sample data:

- Button press - ▷ **READ**
- Finger swipe ↓
- “Shaking” via device accelerometer
- Text-to-speech audio

Sample data can be saved to customizable Test ID names:

- Individual readings
 - Button press - ▷ **SAVE**
 - Finger swipe →
- Automatic data logging at various user-selectable intervals
- Press **Next Test** to advance Test ID

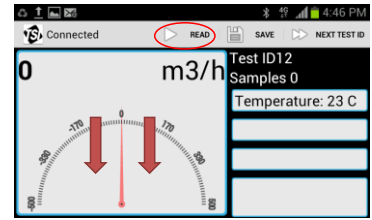


Figure 6. Remote Reader – Taking Measurements

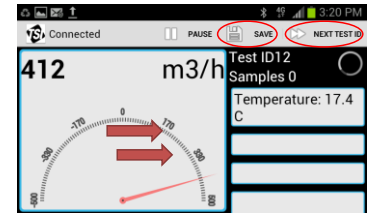


Figure 7. Remote Reader – Saving Measurements

Stored Data and Exporting

Measurements that have been stored in the Android device can be recalled for later review. Stored data includes the measurement samples, statistics, time and date. Comments, photos or voice notes can also be attached to the Test IDs.

Stored data can also be exported in multiple formats:

- Export data to SD card, Gmail, Google Drive or via Bluetooth (Figure 8)
 - Configure default email address and subject line to eliminate repetitive typing
 - Single and multi-file attachments supported
 - Multiple Test ID data formats
 - Raw text
 - Text delimited

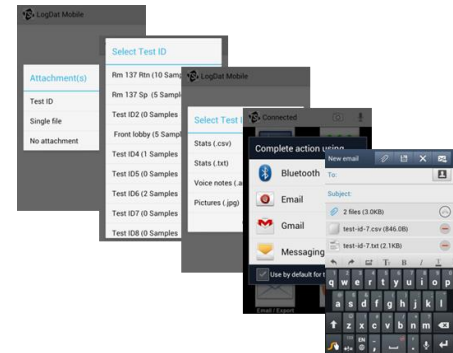


Figure 8. Exporting Stored Data

For more information on features and functions, refer to the owner’s manual for detailed instructions on configuring LogDat Mobile along with advanced capabilities.

Model 8380 AccuBalance Air Capture Hood Stand—Model: CH-STAND

The capture hood stand is designed to work with the Model 8380 AccuBalance and can reach ceiling diffusers and grilles up to 15 ft (with the hood attached). The Model 8380 AccuBalance Air Capture Hood is secured onto a quad bracket, and two extension pole sections can be raised to the desired height to make a tight seal against the outlet and locked in place. It is ideally suited to work with the LogDat Mobile Android Smart App but can be used without the app.

To use without LogDat Mobile, simply detach the meter from the base and connect the two 8' sections of tubing (included with the Model 8380) directly to the base manifold and micromanometer pressure ports.



CH-STAND Features

- Enhanced productivity
 - Eliminates ladder use and movement
 - Results in more measurements in less time
- Easy to set up and move
 - Stand uses wheels/casters for ease of movement
 - Two extension pole sections with tightening screws
- Includes soft-sided case with shoulder strap



TSI Incorporated – Visit our website www.tsi.com for more information.

USA	Tel: +1 800 874 2811	Indien	Tel: +91 80 67877200
UK	Tel: +44 149 4 459200	China	Tel: +86 10 8219 7688
Frankreich	Tel: +33 1 41 19 21 99	Singapur	Tel: +65 6595 6388
Deutschland	Tel: +49 241 523030		