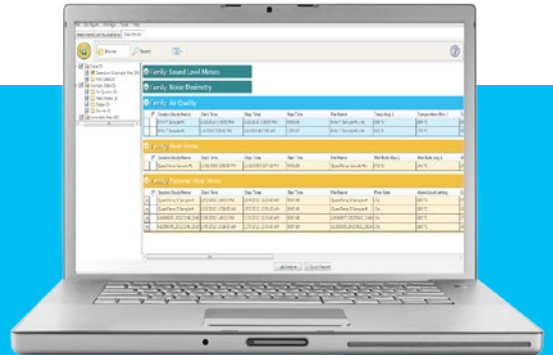


DETECTION MANAGEMENT SOFTWARE DMS

The Detection Management Software program works with various TSI Quest data logging instruments that allows for recording, reporting, charting and analyzing exposures to a variety of occupational and environmental hazards.

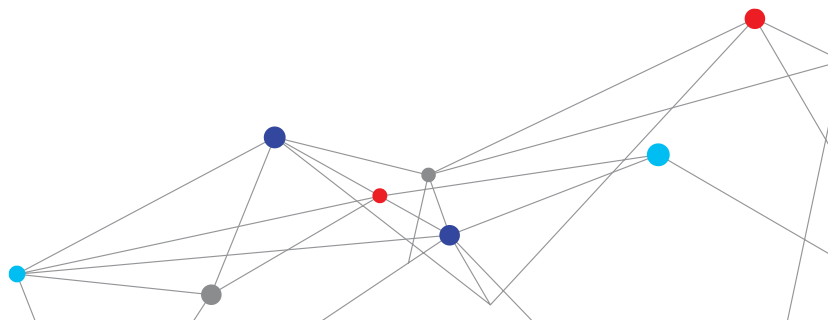


Features and Benefits

- + Centrally organize and access exposure data
- + Provides consistent software platform for multi-site organizations
- + Icon-driven navigation provides simplified user experience
- + Easy to learn and use without the need for extensive training
- + Create a variety of charts and graphs, based on need
- + Template driven reports make it easy to determine what data to include

Applications

- + Noise dosimetry
- + Octave band sound analysis/survey
- + Thermal comfort monitoring
- + Integrating sound level meter
- + Industrial and community sound surveys
- + Indoor air quality (IAQ) assessment
- + Area and personal heat stress monitoring



SPECIFICATIONS

DETECTION MANAGEMENT SOFTWARE DMS

Global Platform

Languages supported: Chinese, Czech, English, French, German, Italian, Japanese, Korean, Norwegian, Polish, Portuguese, Russian, Spanish, Swedish, and Turkish

Single software package enables companies with multiple locations to easily align programs and share data across regions and divisions

All-in-one software solution

Integrates with currently manufactured models of TSI Quest Detection data logging instruments

Centrally organize and access exposure data across acoustics, heat stress and environmental monitoring categories

Saves time spent switching between software applications

User-friendly interface

Intuitive operation, helpful icons and simple graphing tools enable efficient usage

"Click, Drag and Drop" report-building

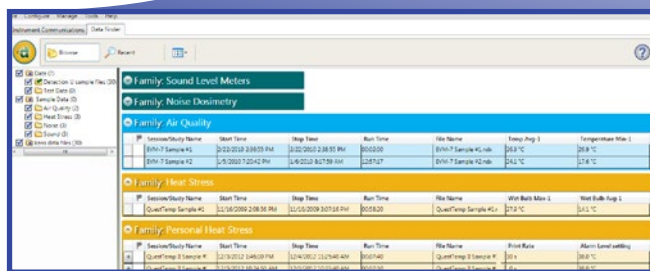
Data Finder provides quick access to stored information

Easy to learn and use without the need for extensive training

Powerful tool for analysis

Quickly create insightful charts including logged data, exceedance, filter summary and more

Ready-to-use chart templates help generate impactful reports to support safety program compliance efforts



System Requirements

- + Pentium 4, 3GHz or later
- + 2GB RAM
- + Windows XP, SP2 or later, Windows 7, 8, both 32 and 64 bit systems
- + 1280 x 1024 pixels x 32-bit color display
- + 135 MB of disk space needed
- + Keyboard
- + Mouse or pointing device

Specifications are subject to change without notice.

TSI and the TSI logo are registered trademarks of TSI Incorporated.



TSI Incorporated - Visit our website www.tsi.com for more information.

USA Tel: +1 800 874 2811 **India** Tel: +91 80 67877200
UK Tel: +44 149 4 459200 **China** Tel: +86 10 8219 7688
France Tel: +33 1 41 19 21 99 **Singapore** Tel: +65 6595 6388
Germany Tel: +49 241 523030