

QUICK START GUIDE

MOUNTING OPTIONS

5000 SERIES

P/N 6011693, REV. B
APRIL 2019



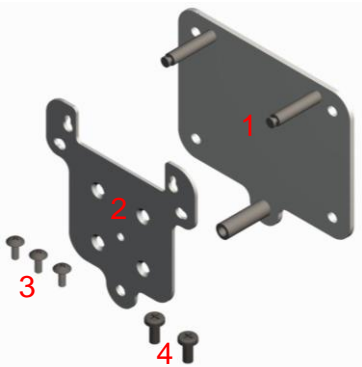
TSI and TSI logo are registered trademarks of
TSI Incorporated.



5000 Series Wall Mounting Kit (5000-WMK)

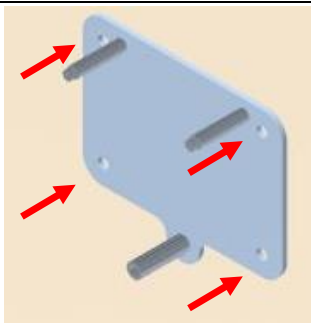
Components

Item	TSI Part #	Description	Qty.
1	5000-WMBP	Wall Mounting Back Plate	1
2	5000-WMMP	Wall Mounting Meter Plate	3
3	N/A	M3 Stainless Screws	3
4	N/A	#8 Stainless Screws	2

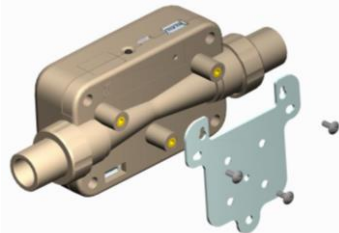


Assembly

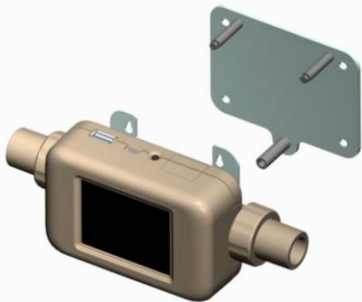
1. Mount the Back Plate to the desired wall location (screws not supplied).



2. Attach the Meter Plate to the Meter using the three (3) supplied M3 screws.



3. Slide the top two holes of the attached Meter Plate into the wall-mounted Back Plate.



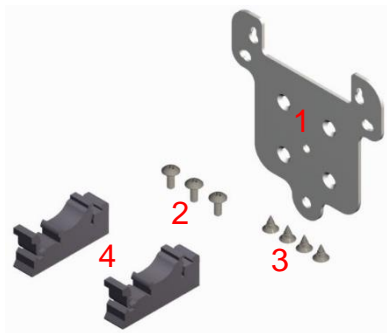
4. Use one (1) supplied #8 screw in the bottom front-facing screw hole to secure the instrument.



Wall Mounting DIN Rail Kit (5000-WMDRK)

Components

Item	TSI Part #	Description	Qty.
1	5000-WMMP	Wall Mounting Meter Plate	1
2	N/A	M3 Stainless Screws	3
3	N/A	#6 Stainless Screws	4
4	5000-WMDRC	DIN Rail Adapter	2

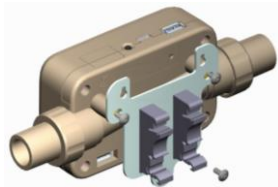


Assembly

1. Attach the two (2) DIN Rail Adapters to the Wall Mount Meter Plate using the four (4) supplied #6 Stainless Screws.



2. Attach the Wall Mount Meter Plate to the Meter using the three (3) supplied M3 screws.



3. Attach the mounted DIN Rail Adapters to the DIN Rail.



5000 Series Tabletop Stand (5000-TTS)

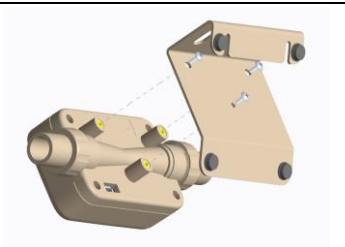
Components

Item	Description	Qty.
1	Tabletop Stand	1
2	M3 Stainless Screws	3



Assembly

1. Attach tabletop stand to meter using the three (3) supplied M3 screws.



2. Secure to workbench or wall by inserting screws (*not supplied*) through screw holes.

