

# TURBO-VAPORIZER™

## MODEL 2860PE

MSP's 2860PE Turbo-Vaporizer was designed as a drop-in replacement for poorly performing DLI valves. This model has our state-of-the-art Performance Enhanced (PE) atomizer with on-board flow control and can provide lower maintenance and higher concentrations.



**Dimensions:** 236 mm x 81 mm x 89 mm (9.3 inch x 3.2 inch x 3.5 inch)

**Weight:** 6.7lbs (3.0kg)

**Fittings (on the unit):**

Carrier Gas Inlet: 1/4 inch VCR male

Liquid Inlet: 1/8 inch VCR male

Vapor Outlet: 1/4 inch VCR female

**Wetted Parts:** SS 316, PEEK, PCTFE, Elgiloy®, Kalrez®, PTFE

**Leak Integrity:**  $\leq 1 \times 10^{-9}$  Pa·m<sup>3</sup>/s Helium

**Heater Power Requirements:** 220 V<sub>AC</sub>, 60 Hz, 300W

**Carrier Gas:** Inert gas recommended

**Max Carrier Gas Flow<sup>1</sup>:** 3.5 standard liters/min N<sub>2</sub>  
(@70 psig inlet pressure)

**Max Liquid Flow<sup>2</sup>:** 60 g/hr (H<sub>2</sub>O or equivalent)  
720 g/hr (TEOS or equivalent)

**System Pressure Limit:** 120psig

**Compressed Air:** 90 to 110 psig

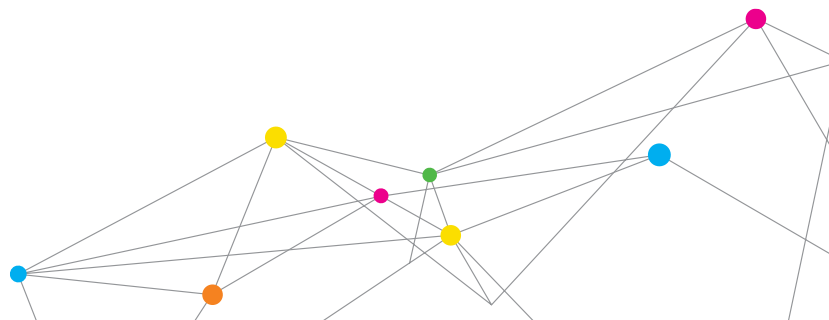
**Temperature Range:** 40° C to 160° C  
160° C to 200° C with use of air cooling  
(connections provided)

**Vaporizer Body:** Vacuum tight chamber with multi-stage heat exchanger,  
SS 316 construction

**Temperature sensor:** 2 type K thermocouples

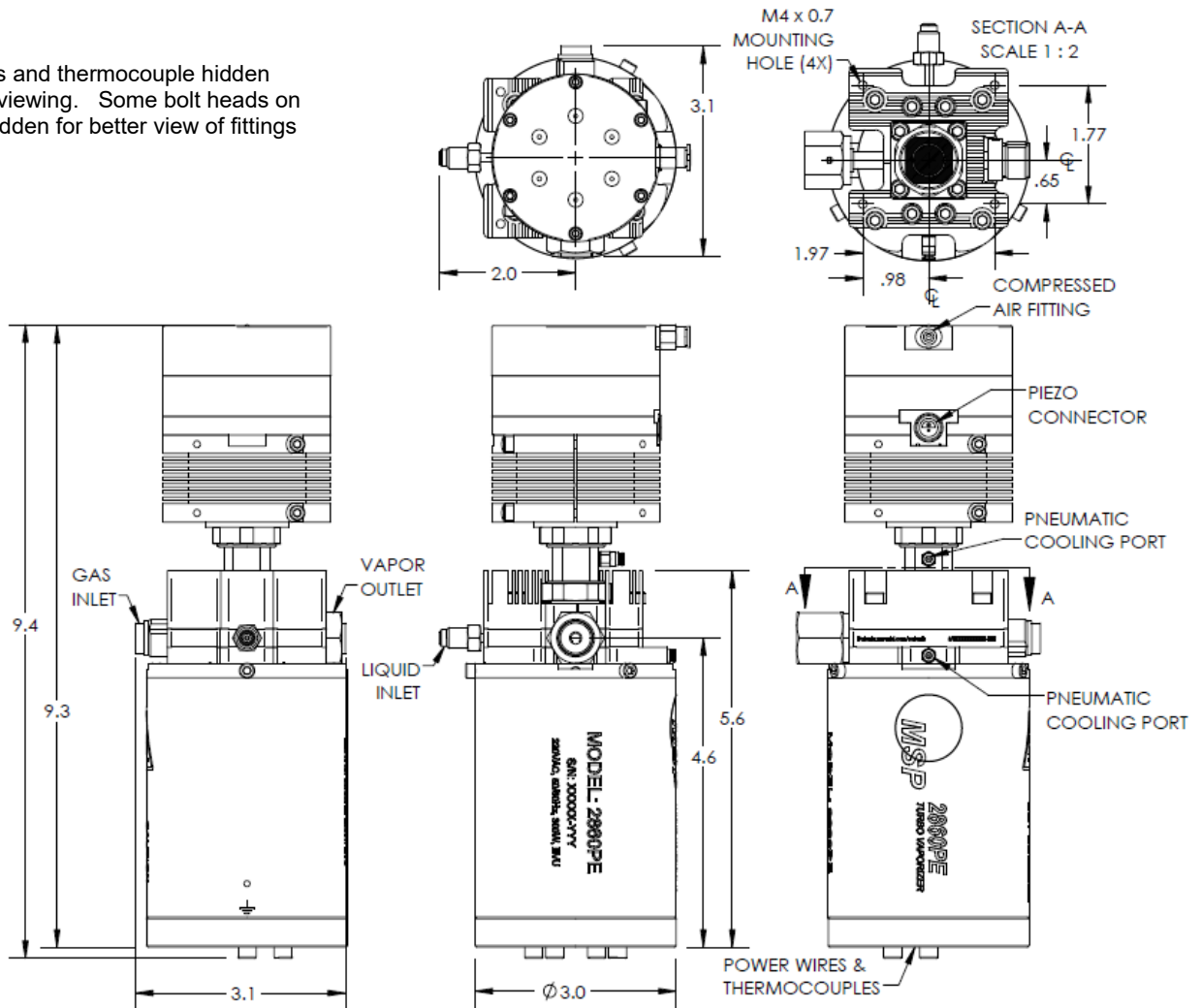
<sup>1</sup> Up to 15 standard L/min available.

<sup>2</sup> Max. liquid flow is process dependent. The spec assumes a vaporizer temperature of 180° C or higher, Ar carrier gas from 4-7 SLPM, and pressure <50 Torr immediately downstream of the vaporizer.



# TURBO-VAPORIZER MODEL 2860PE

Power wires and thermocouple hidden for ease of viewing. Some bolt heads on unit were hidden for better view of fittings



All specifications are subject to change without notification.

Turbo-Vaporizer is a trademark, and MSP, the MSP logo and TSI are registered trademarks of TSI Incorporated.



MSP - Visit our website [www.tsi.com/msp](http://www.tsi.com/msp) for more information.

5910 Rice Creek Parkway, Suite 300  
Shoreview, Minnesota  
55126, U.S.A.  
Tel: 651.287.8100