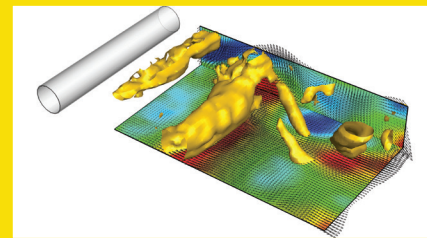


V3V-FLEX VOLUMETRIC PIV SYSTEMS

The V3V-Flex System allows for the analysis of 3D flow phenomena in gas or liquid flows. There is a wide range of camera hardware and laser hardware available for selection, to configure the between 2 and 8 cameras volumetric PIV system. This selection allows for the most appropriate configuration to be made in order to meet the requirements for challenging research. At the same time, a number of the system components remain unchanged, allowing the system to be changed and upgraded from one configuration to another. TSI's V3V-Flex Volumetric PIV System is the most flexible and powerful system for volumetric flow research.



Features and Benefits

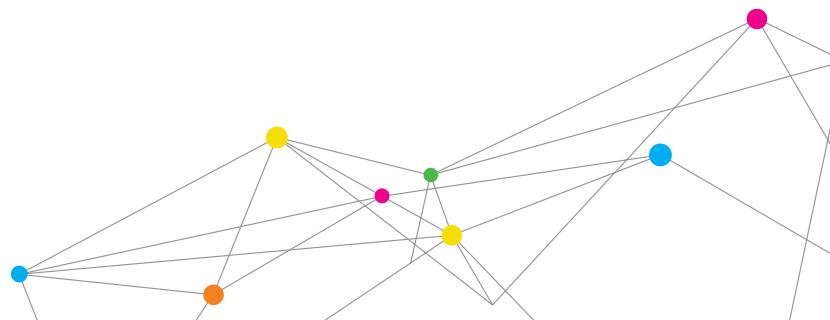
- + Flexible camera arrangement for optimized measurement volume and spatial resolution
- + Variety of hardware makes it possible to choose between high temporal or spatial resolution, or both

Applications

- + Turbulent boundary layers
- + Flow/body interactions
- + Internal flows
- + Biological



UNDERSTANDING, ACCELERATED



SPECIFICATIONS

V3V-FLEX VOLUMETRIC PIV SYSTEMS

System Configurations		
	Time-Resolved System	High Resolution System
Camera Selection	+ Phantom high-speed cameras with 1 to 4 megapixel resolution and frame rate up to 50 kHz	+ PowerView™ 4MP-LS, 8MP, 16MP and 29MP-LS cameras +Powerview 12MP-180 +Powerview 25MP-72
Laser Selection	+ High-speed pulsed dual cavity Nd:YAG laser with 400 W power and pulse frequency up to 50 kHz + High-speed pulsed dual-cavity ND:YLF laser with 100 W power and pulse frequency up to 5 kHz	+ Pulsed dual cavity Nd:YAG laser with 400 mJ energy output and pulse frequency up to 15 Hz + Pulsed dual cavity Nd:YAG laser with 100 mJ energy output and pulse frequency up to 200 Hz
Calibration System	+ V3V-CAL calibration module including single axis traverse slides and back illuminated targets of: - 100 mm by 100 mm with dot spacing of 2 mm - 200 mm by 200 mm with dot spacing of 5 mm	
Flexible Frame Structure and Scheimpflug Lens Mount	+ Flexible rail and mounting arrangement for optimal camera separation for desirable volume size + Customized Scheimpflug mount for individual camera for best focus of particle image in the volume	
Synchronization	+ Model 610036 synchronizer with 200 ps second resolution	
Camera Lens	+ F-mount based camera lenses - 50 mm, 85 mm, 100 mm and 135 mm	
Capture and Analysis Software	+ Insight V3V™ -4G and Module-V3V-Flex-Cap image capture analysis package	

Specifications are subject to change without notice.

Insight V3V and PowerView are trademarks, and TSI and the TSI logo are registered trademarks of TSI Incorporated.



UNDERSTANDING, ACCELERATED

TSI Incorporated - Visit our website www.tsi.com for more information.

USA	Tel: +1 800 874 2811	India	Tel: +91 80 67877200
UK	Tel: +44 149 4 459200	China	Tel: +86 10 8219 7688
France	Tel: +33 1 41 19 21 99	Singapore	Tel: +65 6595 6388
Germany	Tel: +49 241 523030		