

# PROCEDURE FOR RESTORING DISPLAY FUNCTION WHEN MEMORY IS FULL OR DISPLAY IS CORRUPTED

INSTRUCTIONS FOR MODEL 8127/8130

Memory overflow is indicated by an “unassigned message #” or “user memory full” error.

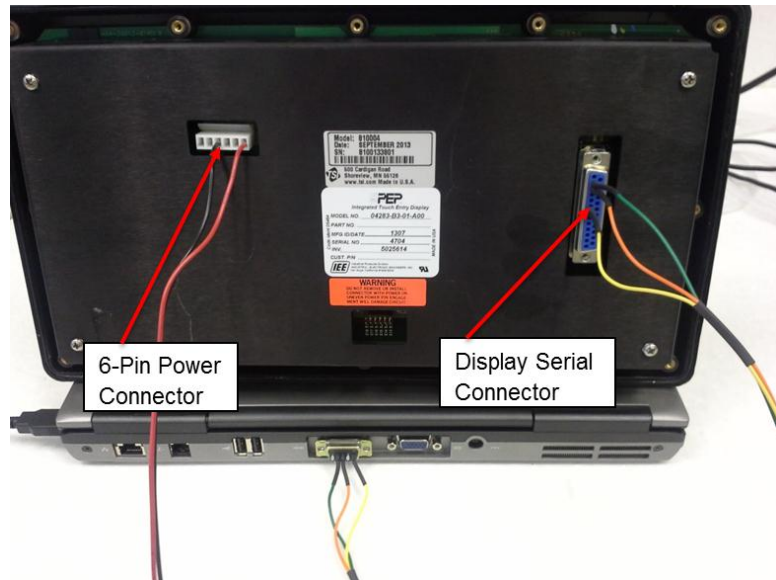
Corrupted memory can also cause missing display options.

Following this procedure will clear the memory.

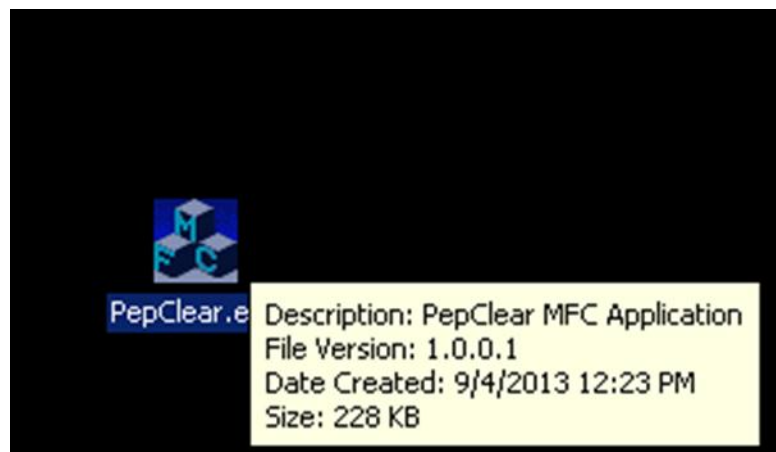
1. Turn off the power on the Model 8127/8130.
2. Remove the 11 screws that hold the display in its mount. **DO NOT** remove the mounting arm that connects to the main center column.
3. Loosen the nut on the strain relief so that the cable to the display is free.
4. Carefully lay the display on the top of the instrument.
5. Remove the 25-pin connector from the back of the display. **DO NOT** remove the 6-pin power connector.
6. Connect a standard RS-232 cable to a null modem and to the 25-pin connector on the back of the display.
7. Connect the other end of the cable to a COM port on your laptop or personal computer.
8. Tip up the display and prop it in this position to prevent it from running face down.
9. Attach null cable to the serial port of your laptop or personal computer.



10. Keep the power connector attached and attach the null modem serial cable to the back of the display.



11. Download CertiTest PepClear.exe to your desktop and turn the power on to the display.



<http://www.tsi.com/SoftwareDownloads/>

## TSI SOFTWARE/FIRMWARE WIZARD

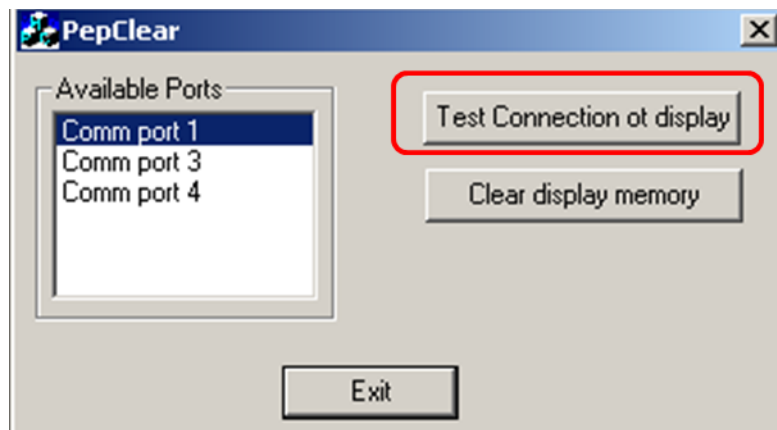
Begin by typing the model number of the instrument. Once located, click on it to select it. Then click the Search button to view the results.

  
**Automated Filter Tester 8130**

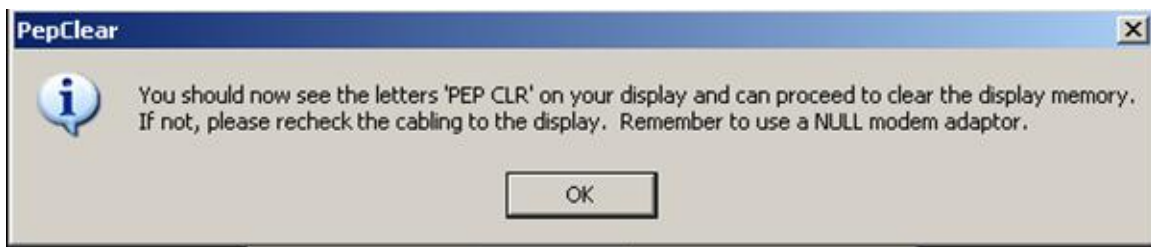
12. A “cursor” will display in the upper left corner of the display until the program is started.



13. Click on **PepClear.exe** to start the program.
14. Click on **Test Connection of Display**.



15. A message should be displayed on your desktop as shown below.



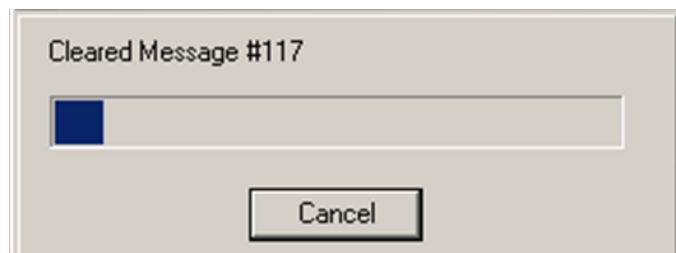
16. When the connection is established, "PEP CLR" will appear on the display.

**NOTE:** If you are using a USB to serial converter, the converter will need to be assigned to Com Port 3 or 4 in Windows "Device Manager" or you will not get a response (PEP CLR as shown in figure) from the display.

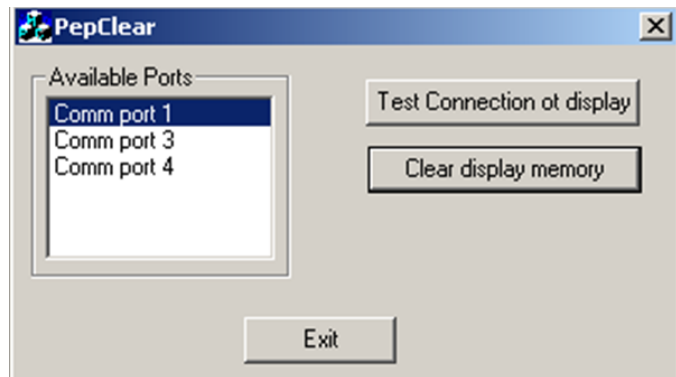
**Path = Start/Control Panel/Device Manager/Ports (select appropriate port and right click for properties)/Port Settings/Advanced/Change "Com Port" to either 3 or 4.**



17. Click **OK** and then click **Clear Display Memory**. A screen will display showing the messages are being cleared.



18. When the program is finished, it will return to the screen shown on the right.
19. Shut down power to the display, disconnect the null modem, and re-attach the serial display cable that goes from the display to the back of the Model 8130.
20. Turn the power on. Your display should come up normally.



### Null Modem Cable Pin-out

D-Sub 25 Male to Display	D-Sub 9 Female to PC
Pin	Pin
2	2
3	3
7	5



UNDERSTANDING, ACCELERATED

TSI Incorporated – Visit our website [www.tsi.com](http://www.tsi.com) for more information.

USA Tel: +1 800 874 2811  
 UK Tel: +44 149 4 459200  
 France Tel: +33 4 91 11 87 64  
 Germany Tel: +49 241 523030

India Tel: +91 80 67877200  
 China Tel: +86 10 8219 7688  
 Singapore Tel: +65 6595 6388