

# PORTACOUNT® RESPIRATOR FIT TESTER MODEL 8040

RESPIRATOR FIT TESTING  
YOU CAN TRUST

Quantitatively fit test all respirator face masks using  $\geq 99\%$  efficient filter media.

Eliminate the guesswork.

Accept no substitutes . . . choose the original ambient aerosol condensation nuclei counter (CNC) quantitative fit testing instrument, the PortaCount® Respirator Fit Tester.



## PortaCount Model 8040 Includes

- + Carrying case
- + AC power supply with global plug adaptors
- + Alcohol supply (sixteen 30 ml bottles of 99.5% reagent grade isopropanol - enough for ~240 hours of operation)
- + FitPro™ Ultra Software
- + Standard accessory kit (twin tubing, zero filters, spare wicks, alcohol fill capsule and cartridge, USB cable)

## FitPro Ultra Software

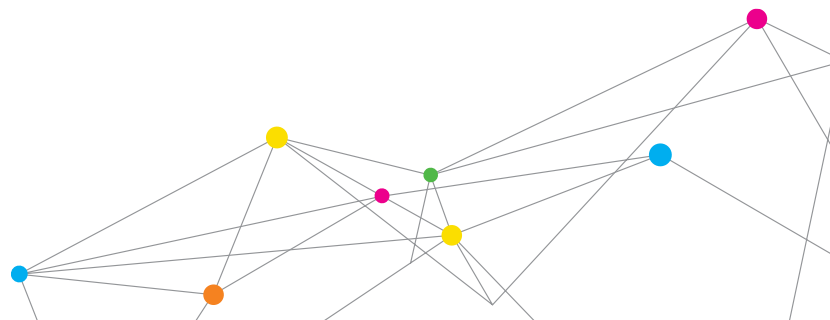
- + New FitPro Ultra fit test software improves efficiency and simplifies fit testing
- + New advanced user interface with intuitive design supporting one-step-to-a-fit test
- + Wireless WiFi communication to leverage the utility of a laptop or tablet
- + Industry first active animations guide the test subject through the fit test exercises to ensure greater compliance
- + Interactive troubleshooting guide

## Features and Benefits

- + OSHA, CSA, HSE, and ANSI compliant for all respirators equipped with  $\geq 99\%$  efficient filters.
- + Measures fit factors greater than 10,000
- + Computes respirator fit factor using microscopic particles in ambient air
- + Automates fit testing with FitPro Ultra Software
- + Real-Time FitCheck Mode™ to train new users and troubleshoot failed fit tests
- + Mask sampling adapter kits enable fit testing in employee's personal respirators
- + Software prints fit test cards with fit test report or on ID cards



UNDERSTANDING, ACCELERATED



# SPECIFICATIONS

## PORTACOUNT RESPIRATOR FIT TESTER MODEL 8040

### Fit Factor Range

1 to greater than 10,000

### Typical Fit Factor Accuracy

±10% of reading

### Respirator Facepieces that can be Fit Tested

Full-face elastomeric  
Half-face elastomeric  
NIOSH series-100 filtering-facepiece  
NIOSH series-99 filtering-facepiece  
Series FFP3 disposable respirators

### Fit Factor Measurement

Direct measurement of fit factor ( $C_{out}/C_{in}$ )\*

### Dimensions

4.83 in. x 10.5 in. x 9.46 in. (12 cm x 27 cm x 24 cm)

### Weight

Unit Only	6.1 lb. (2.7 kg)
With Standard Accessories and Case	14.45 lb. (6.5 kg)

### Power

Autosensing 100 to 250 VAC, 50 to 60 Hz

### Flow Rate

Sample	350 cm <sup>3</sup> /min
Total	1000 cm <sup>3</sup> /min (nominal)

### Temperature Range

Operation	32 to 100° F (0 to 38° C)
Storage	-40 to 122° F (-40 to 50° C)

### Working fluid

99.5% reagent grade isopropanol.  
Run time per charge: 6 hr of fit testing operation at 70° F (21° C)

### Carrying Case

Dimensions (HWD) 10.0 in. x 20.5 in. x 15.5 in.  
(25.4 cm x 52.1 cm x 39.4 cm)

### Pass/Fail Setting

User-selectable: 0 to 10,000

### Factory Recalibration Interval

One year

### Warranty

Two years on workmanship and materials

### Communications

WiFi, USB-C, USB-A

### Minimum PC Hardware Requirements for FitPro Ultra Fit Test Software

Windows® 7 (32 and 64 bit), Windows 8 (32 and 64 bit), or Windows 10 (32 and 64 bit) operating system  
Microsoft.Net version 4 (installation software will install Microsoft.Net if necessary) **Note** – An internet connection is required to install Microsoft.Net  
≥ 1 GHz process  
≥ 1280 x 800 screen resolution monitor  
500 MB free space on hard drive  
1 free USB port

### Minimum Tablet requirements

Windows 10 operating system  
USB port (for initial set up)

### Software

FitPro Ultra Software featuring advanced user interface, animated graphics, and interactive troubleshooting guide

### Optional Accessories

Mask Sampling Adapters for select respirator models  
Microsoft® Surface Pro Tablet (4 GB RAM, 128 GB of storage)  
WiFi USB dongle

\*Mask leakage is measured simultaneously while test subject moves and breathes.

FitCheck, FitPro and N95-Companion are trademarks, and PortaCount, TSI, and the TSI logo are registered trademarks of TSI Incorporated.

Microsoft and Windows are registered trademarks of Microsoft Corporation in the United States and/or other countries.

To see our list of patents please visit:  
[www.tsi.com/patents](http://www.tsi.com/patents)



UNDERSTANDING, ACCELERATED

TSI Incorporated - Visit our website [www.tsi.com](http://www.tsi.com) for more information.

<b>USA</b>	<b>Tel:</b> +1 800 874 2811	<b>India</b>	<b>Tel:</b> +91 80 67877200
<b>UK</b>	<b>Tel:</b> +44 149 4 459200	<b>China</b>	<b>Tel:</b> +86 10 8219 7688
<b>France</b>	<b>Tel:</b> +33 1 41 19 21 99	<b>Singapore</b>	<b>Tel:</b> +65 6595 6388
<b>Germany</b>	<b>Tel:</b> +49 241 523030		