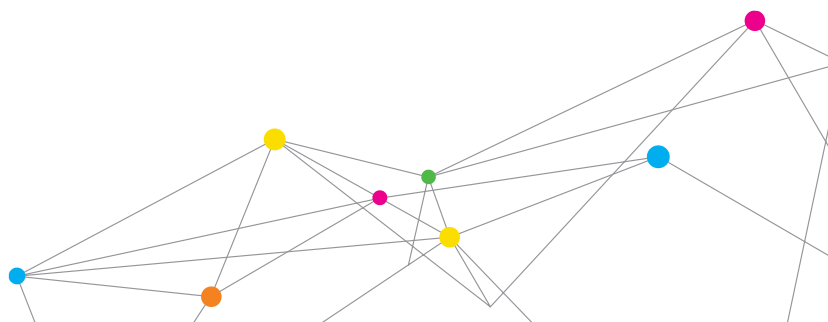


# TURBO-VAPORIZER™ MODEL 2800PE

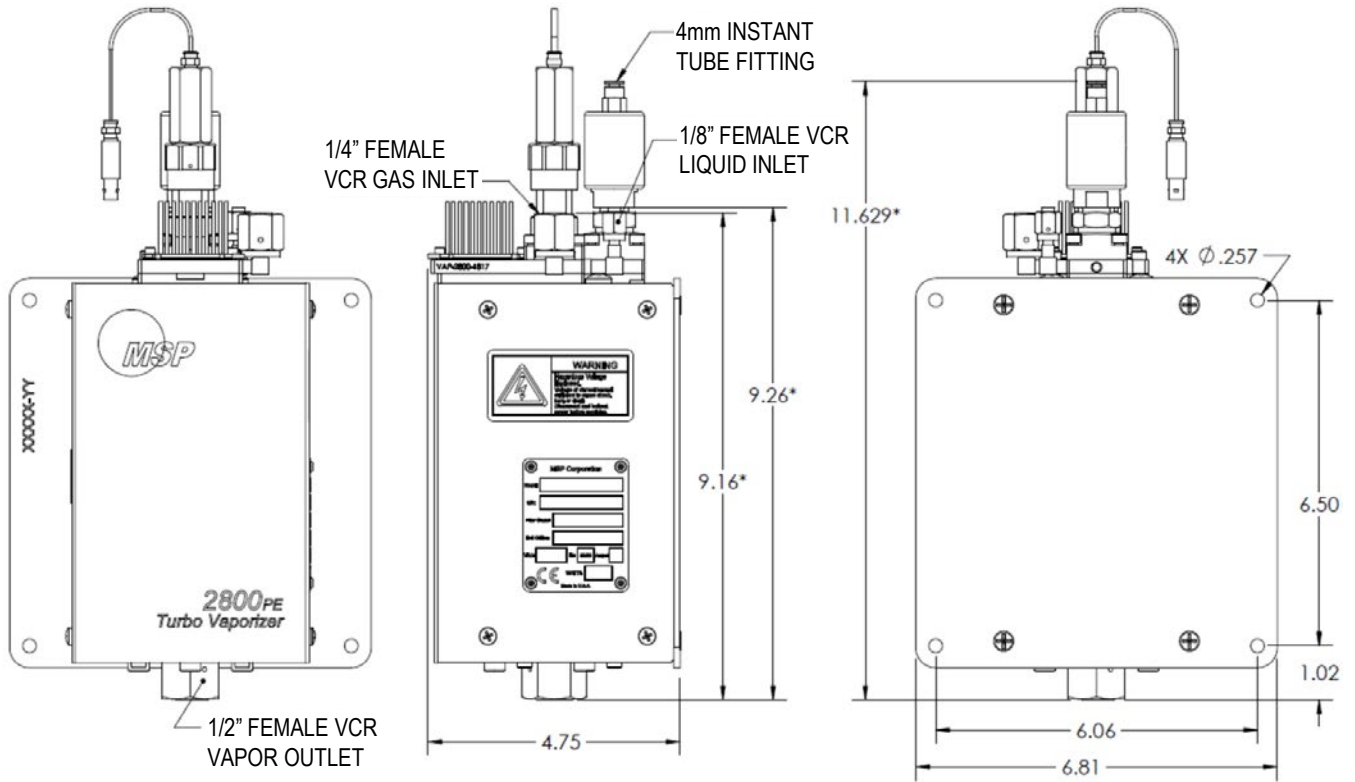
The 2800PE Turbo-Vaporizer™ is a great all around vaporizer and works well for most applications. This model has the state-of-the-art Performance Enhanced (PE) atomizer with on-board flow control and features a heat exchanger designed to be highly compatible with thermally sensitive liquids.



<b>Dimensions:</b>	296 mm x 173 mm x 121 mm (11.6 inch x 6.8 inch x 4.7 inch)
<b>Weight:</b>	7.3 kg (15.8 lb.)
<b>Fittings (on the unit):</b>	
Carrier Gas Inlet:	1/4 inch VCR female split nut
Liquid Inlet:	1/8 inch VCR female
Vapor Outlet:	1/2 inch VCR female
Compressed Air	4 mm instant tube fitting
<b>Wetted Parts:</b>	SS 316, PEEK, PCTFE, Elgiloy®, Kalrez®, PTFE
<b>Leak Integrity:</b>	< 1x 10 <sup>-9</sup> scc/sec Helium
<b>Heater Power Requirements:</b>	120 VAC, 60 Hz, 300W
<b>Carrier Gas:</b>	Inert gas recommended
<b>Max Carrier Gas Flow:</b>	15 standard liters/min N <sub>2</sub> (0 to 80 psig inlet pressure)
<b>Max Liquid Flow Range:</b>	900 g/hr (TEOS equivalent) 90 g/hr (H <sub>2</sub> O or equivalent)
<b>System Pressure Limit:</b>	120 psig
<b>Push Gas:</b>	0 to 80 psig
<b>Compressed Air:</b>	90 to 110 psig
<b>Temperature Range:</b>	40° C to 160° C, 160° C to 200° C with optional piezo cooling package
<b>Temperature Sensor:</b>	2 type K thermocouples
<b>Vaporizer Body:</b>	Vacuum tight chamber with multi-stage heat exchanger, SS 316 construction



# TURBO-VAPORIZER MODEL 2800PE



All specifications are subject to change without notification.

Turbo-Vaporizer is a trademark, and MSP, the MSP logo and TSI are registered trademarks of TSI Incorporated.



MSP - Visit our website [www.mspcorp.com](http://www.mspcorp.com) for more information.

5910 Rice Creek Parkway, Suite 300  
 Shoreview, Minnesota  
 55126, U.S.A.  
 Tel: 651.287.8100