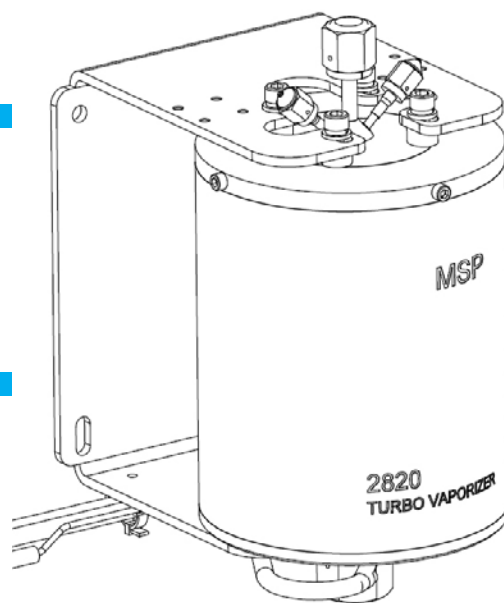
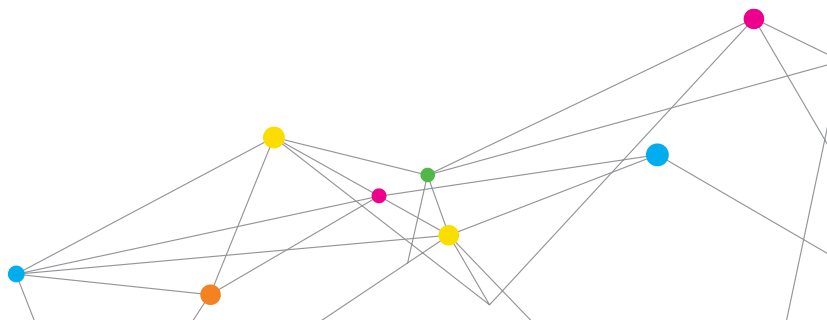


# TURBO-VAPORIZER™ MODEL 2820D

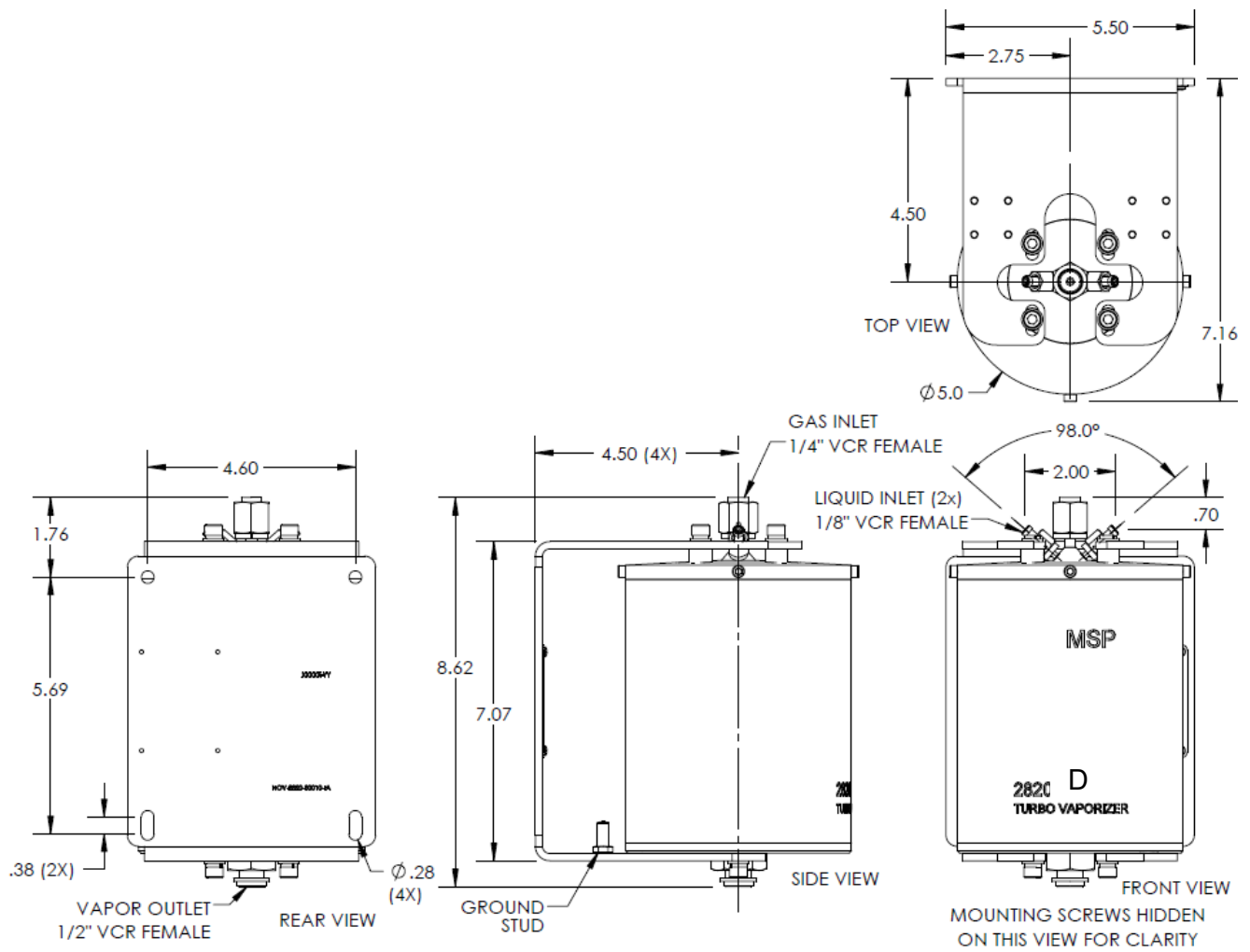
MSP's 2820D Turbo-Vaporizer has dual liquid inlets, making it a good choice for research applications or processes that require multiple liquids. The core system is very similar to the classic Turbo-Vaporizer Model 2820.



<b>Dimensions:</b>	218 mm x 140 mm x 183 mm (8.6 inch x 5.5 inch x 7.2 inch)
<b>Dimensions:</b>	7.8kg (16 lb)
<b>Fittings (on the unit):</b>	
Carrier Gas Inlet:	1/4 inch VCR female split nut
Liquid Inlets (2):	1/8 inch VCR female (2x)
Vapor Outlet:	1/2 inch VCR female
<b>Wetted Parts:</b>	SS 316, Viton
<b>Leak Integrity:</b>	$< 1 \times 10^{-9}$ scc/sec Helium
<b>Heater Power Requirements:</b>	120 V <sub>AC</sub> , 60 Hz, 300W
<b>Carrier Gas:</b>	Inert gas recommended
<b>Max Carrier Gas Flow:</b>	20 standard liters/min N <sub>2</sub> (0 - 80 psig inlet pressure)
<b>Max Liquid Flow Rate:</b>	600 g/hr. (TEOS or equivalent) 60 g/hr. (H <sub>2</sub> O or equivalent)
<b>System Pressure Limit:</b>	120 psig
<b>Compressed Air:</b>	90 to 110 psig
<b>Temperature Range:</b>	40° C to 200° C
<b>Temperature sensor:</b>	2 type K thermocouples
<b>Vaporizer Body:</b>	Vacuum tight chamber with multi-stage heat exchanger, SS 316 construction



# TURBO-VAPORIZER MODEL 2820D



All specifications are subject to change without notification.

Turbo-Vaporizer is a trademark, and MSP, the MSP logo and TSI are registered trademarks of TSI Incorporated.



**MSP** - Visit our website [www.msppcorp.com](http://www.msppcorp.com) for more information.

5910 Rice Creek Parkway, Suite 300  
Shoreview, Minnesota  
55126, U.S.A.  
**Tel:** 651.287.8100