

MSP® TURBO™ VAPORIZER MODEL 2801PE

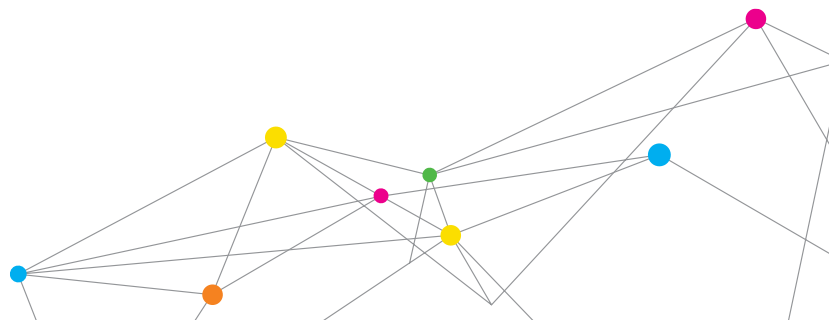
MSP® Turbo™ Vaporizer 2801PE is designed for high-flow, thermally sensitive vapors, making it a good solution for high-flow TEMAZr applications. It has a state-of-the-art Performance Enhanced (PE) atomizer with an on-board flow control, and its heat exchanger features wide internal pathways and a long residence time.



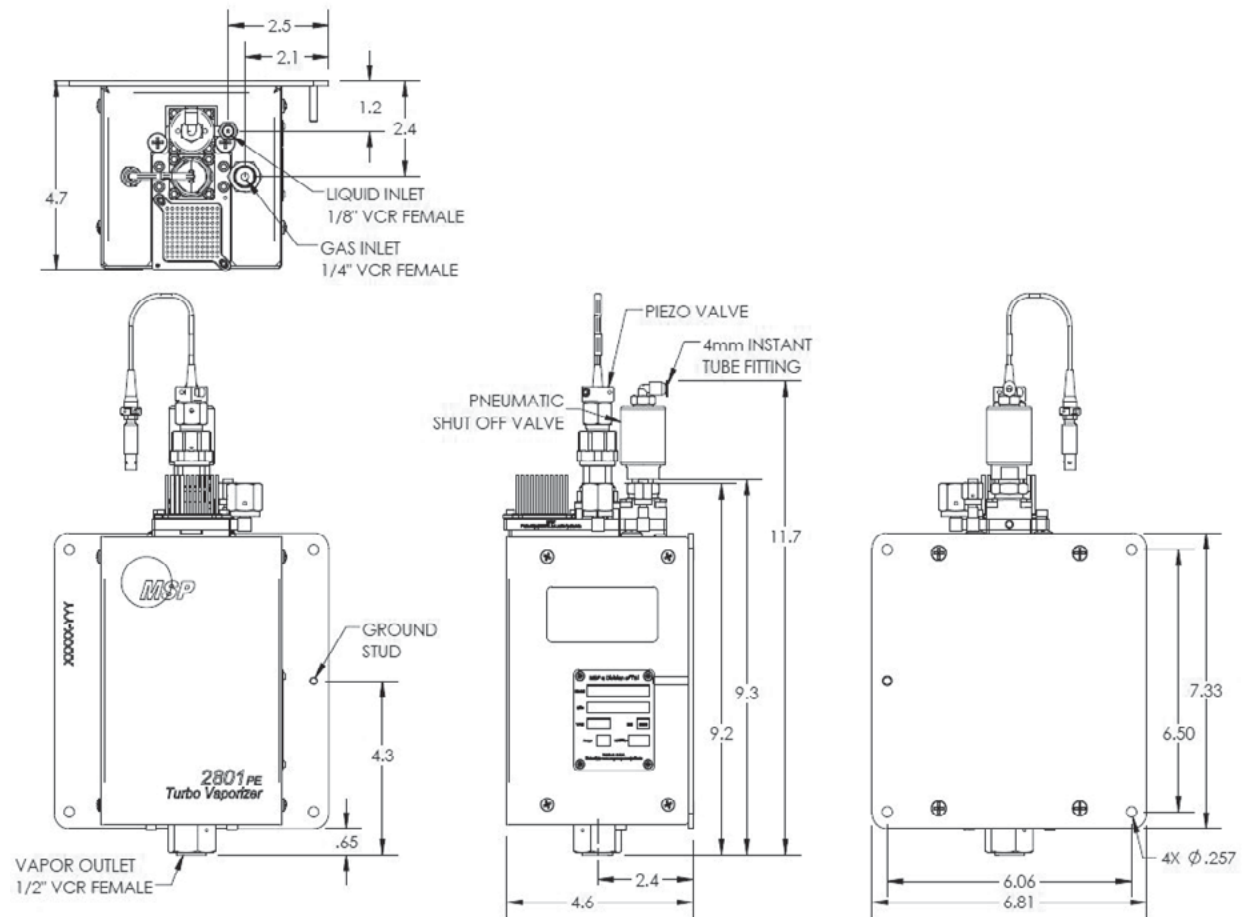
Dimensions	297 mm x 117 mm x 173 mm (11.7 inch x 4.6 inch x 6.8 inch)
Weight	6.9 kg (15.2 lb)
Fittings (on the unit):	
Carrier Gas Inlet	1/4 inch VCR female split nut
Liquid Inlet	1/8 inch VCR female
Vapor Outlet	1/2 inch VCR female
Compressed Air	4 mm instant tube fitting x2
Wetted Parts	SS 316, PEEK, PCTFE, Elgiloy®, Kalrez®, PTFE
Leak Integrity	$\leq 1 \times 10^{-8}$ Pa·m ³ /s Helium
Heater Power Requirements	208 VAC, 60 Hz, 300W
Carrier Gas	Inert gas recommended
Max Carrier Gas Flow¹	8.5 standard liters/min N ₂ (@70 psig inlet pressure)
Max Liquid Flow²	1,200 g/hr. (TEOS or equivalent) 120 g/hr. (H ₂ O or equivalent)
System Pressure Limit	120 psig
Compressed Air	90 to 110 psig
Temperature Range	40° C to 160° C 160° C to 200° C with optional piezo cooling package
Temperature sensor	2 type K thermocouples
Vaporizer Body	Vacuum tight chamber with multi-stage heat exchanger, SS 316 construction

¹ Up to 15 standard L/min available.

² Max. liquid flow is process dependent. The spec assumes a vaporizer temperature of 180° C or higher, Ar carrier gas from 4-7 SLPM, and pressure < 50 Torr immediately downstream of the vaporizer.



MSP® TURBO™ VAPORIZER MODEL 2801PE



All specifications are subject to change without notification.

MSP and the MSP Logo are registered trademarks of TSI Incorporated in the United States and may be protected under other country's trademark registrations.



MSP - Visit our website www.tsi.com/msp for more information.

5910 Rice Creek Parkway, Suite 300
Shoreview, Minnesota
55126, U.S.A.
Tel: 651.287.8100