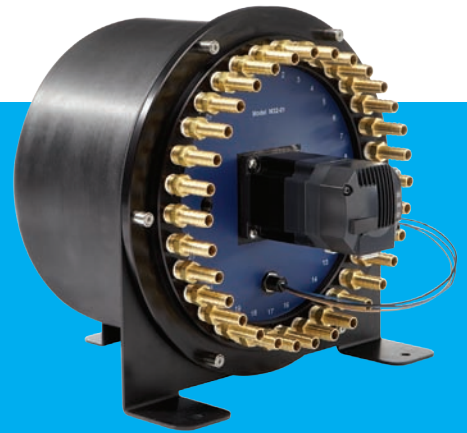


# AEROSOL SAMPLING MANIFOLD MODEL M32-01

CONFIDENCE COMES WITH  
A HIGHER CALIBER OF DATA

The TSI Model M32-01 Manifold offers an affordable solution for monitoring multiple locations in large areas with a single particle counter. The Model M32-01 can provide important trend analysis and clean room verification. The product has 32 sampling ports and is compatible with TSI 1 CFM (28.3 L/min) AeroTrak® Portable Particle Counters, including those down to 0.1 µm sensitivity. The Manifold is controlled via FMS 5 Software, allowing the user to configure and control the system to meet their requirements. The Model M32-01 is backed by TSI's long-standing reputation as the recognized standard for particle measurements and with a two-year warranty.

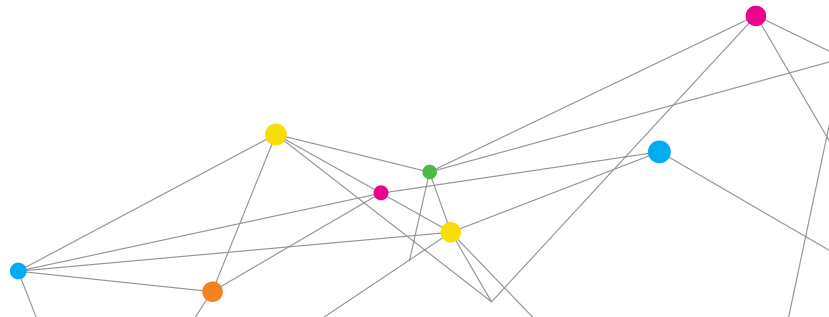


## Features and Benefits

- + Multiplexed monitoring for up to 32 locations
- + Short purge time
- + Economical price per point sampling
- + Bi-directional control capability
- + Sample runs of up to 125 feet (38.1 m)
- + Programmable sampling point sequences
- + Controlled by FMS 5 Software
- + Compatible with 1 CFM (28.3 L/min) AeroTrak® Portable Particle Counters
- + Integrated controller minimizes complexity
- + Port for pressure sensor to ensure vacuum flow



UNDERSTANDING, ACCELERATED



## SPECIFICATIONS

### AEROSOL SAMPLING MANIFOLD MODEL M32-01

Manifold System	
Sample Ports	32-port capability
Compatibility	Operates with 28.3 L/min (1 CFM) TSI AeroTrak® Portable Particle Counters
Manifold Module	
Flow Rate	Nominal 3 CFM (85.0 L/min)
Purge Time	<10 seconds
Cross Talk	<0.2% cross talk between ports
Sample Tubing Size	3/8" ID, 1/2" OD
Sample Tubing Length	125 ft (38.1 m) capability per port, avoiding bends or kinks in tubing
Fitting Provided	Barbed fitting to accept 3/8" ID tubing
Control	Manifold is controlled by FMS 5 software or by HyperTerminal to send commands to Manifold
Communication Protocol	RS-232
Software Compatibility	FMS 5 software
Directional Control	Bi-directional stepper motor
Mounting	Holes in mounting feet
Power	24 VDC, 4.0 A
Dimensions (HWD)	10.7 in. x 10.7 in. x 12.9 in. (27.2 cm x 27.2 cm x 32.8 cm)
Weight	10 lb (4.54 kg)
Operating Conditions	59° to 113°F (15° to 45°C); up to 85% RH noncondensing
Warranty	Two years
Reference Position	Integrated home sensor
Included Accessories	Operating manual on CD, connectors for power, and communications
Optional Accessories	Isokinetic sampling probes, sample tubing, blower
Manifold Blower Requirements	
Blowers Required	One
Flow Rate*	>170 m³/hr

\*Based on using all 32 sampling ports. Lower flow rates are acceptable when <32 sampling ports are used.

AeroTrak, TSI, and the TSI logo are registered trademarks of TSI Incorporated.



UNDERSTANDING, ACCELERATED

**TSI Incorporated** - Visit our website [www.tsi.com](http://www.tsi.com) for more information.

<b>USA</b>	<b>Tel:</b> +1 800 874 2811	<b>India</b>	<b>Tel:</b> +91 80 67877200
<b>UK</b>	<b>Tel:</b> +44 149 4 459200	<b>China</b>	<b>Tel:</b> +86 10 8251 6588
<b>France</b>	<b>Tel:</b> +33 4 91 11 87 64	<b>Singapore</b>	<b>Tel:</b> +65 6595 6388
<b>Germany</b>	<b>Tel:</b> +49 241 523030		