

# AIRGARD<sup>®</sup> LAB HOOD MONITORS MODELS 200, 405 AND 335

## Alnor<sup>®</sup> AirGard<sup>®</sup> Lab Hood Models 200 and 405

The Alnor<sup>®</sup> AirGard<sup>®</sup> Models 200 & 405 are simple, go/no-go lab hood monitors designed to warn users of unsafe conditions. The flush-mount Model 200 has a sleek appearance often preferred on new hoods while the surface-mount Model 405 is easy to install on existing hoods.

## Alnor<sup>®</sup> AirGard<sup>®</sup> Lab Hood Model 335

The AirGard Model 335 lab hood monitor surpasses the protection offered by go/no-go monitors like the Models 200 and 405. It features prominent LEDs to indicate hood status, a digital display of the actual measured face velocity and the ability to warn of unsafe high face velocities, increasing user confidence in lab hoods.

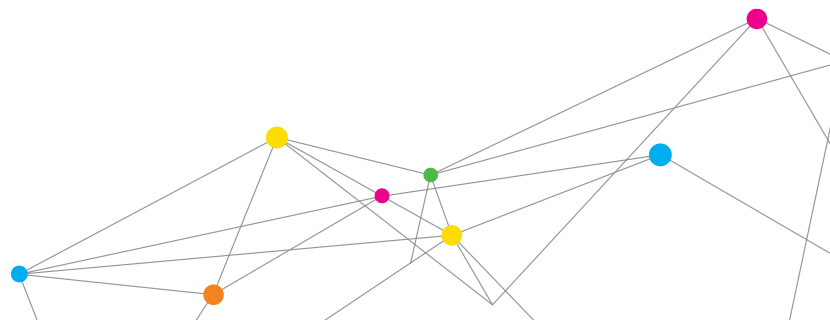


## Features and Benefits (Models 200 and 405)

- + Range 25-2,000 fpm (0.127-10.16 m/s)
- + Accuracy  $\pm 5\%$  of set point
- + Visual display jumbo green, yellow, and red LEDs
- + Alarm indications jumbo red LED, audible alarm, relay output
- + Input power 9-30 V AC/DC
- + Mounting flush or kit
- + Velocity readings taken by remote probe inserted in air flow stream

## Features and Benefits (Model 335)

- + Accuracy  $\pm 5\%$  of reading or 5 fpm, whichever is greater
- + Visual digital display bar graph with green, yellow, and red zones; jumbo green, yellow, and red LEDs



## SPECIFICATIONS

### AIRGARD® AIR FLOW MONITORS MODELS 200, 405 AND 335

	AirGard 200, 405	AirGard 335
Display range	n/a	50-250 fpm (0.25-1.27 m/s)
Alarm range	70-250 fpm (0.35-1.25 m/s)	50-250 fpm (0.25-1.27 m/s)
Field set-up	single low velocity alarm set point	2 point velocity set-up
Alarm set points	low	low and high
Repeatability of alarm set point	±10% of reading or 10 fpm (0.05 m/s), whichever is greater	±10% of reading or 10 fpm (0.05 m/s), whichever is greater
Alarm delays	10 seconds	user configurable through menu
Relay output	1	2
Remote alarm acknowledge	yes	yes
Units	n/a	selectable (English & Metric)
Display-visual	jumbo green LED: normal jumbo red LED: alarm	analog bar graph, jumbo LEDs red zone: alarm yellow zone: marginal green zone: normal (digital LCD can be enabled)
Alarm indications	jumbo red LED and audible alarm (85 dB @ 4" [10 cm])	jumbo red LED and audible alarm (85 dB @ 4" [10 cm])
High flow alarm disable	n/a	yes
Emergency purge	no	yes
Horn silence	temporary and permanent	temporary and permanent
Mounting	flush (200) or surface (405)	flush
Operating temperature	55-86°F (13-30°C)	55-86°F (13-30°C)
Storage temperature	-40-150°F (-40-65°C)	-40-150°F (-40-65°C)
Power requirement	12.0 ± 1.0 VDC or 9.0 ± 0.5 VAC	9-30V AC/DC
Instrument dimensions front face plate	200: 4.75" x 3.25 x 0.5" (12.07 x 8.25 x 1.27 cm) 405: 6.0 x 3.13 x 1.75" (15.24 x 7.95 x 4.45 cm)	5.25 x 3.0 x 0.625" (13.3 x 7.62 x 1.59 cm)
rear enclosure	200: 4.5 x 2.5 x 1.38" (11.43 x 6.35 x 3.5 cm)	3.0 x 2.0 x 0.5" (7.62 x 5.08 x 1.27 cm)

Specifications subject to change without notice.

AirGard, Alnor, TSI, and the TSI logo are registered trademarks of TSI Incorporated.



**Alnor Products, TSI Incorporated**

Visit our website at [www.alnor.com](http://www.alnor.com) for more information.

**USA**  
**India**

**Tel:** +1 800 874 2811  
**Tel:** +91 80 67877200

**China**  
**Singapore**

**Tel:** +86 10 8219 7688  
**Tel:** +65 6595 6388