



# MSP Turbo II™ Vaporizer

Model 2852NP



## Low flow, no-piezo

MSP's Turbo II™ Vaporizer 2852NP is designed for applications that require low to mid vapor flow rates. Based off of the field proven, highly reliable, and low-maintenance MSP Turbo™ Vaporizers, the 2852NP provides stable vapor concentrations while maintaining a very small footprint. The 2852NP also has a liquid shut-off valve, and can be used with any liquid flow controller that has an integrated flow control valve.

Dimensions	198 mm x 79 mm x 114 mm (7.8" x 3.1" x 4.5")
Weight	2.5 kg (5.6 lb)
Fittings (on the unit)	
Carrier Gas Inlet	¼ inch VCR female split nut
Liquid Inlet	⅛ inch VCR female
Vapor Outlet	¼ inch VCR female split nut
Compressed Air	4 mm instant tube fitting
Wetted Parts	SS 316, PEEK, PTFE, Elgiloy®, FFKM
Leak Integrity	≤ 1x 10 <sup>-8</sup> Pa·m <sup>3</sup> /s Helium
Heater Power Requirements <sup>1</sup>	208 V <sub>AC</sub> , 60 Hz, 450 W
Carrier Gas	Inert gas recommended
Max Carrier Gas Flow <sup>1</sup>	2.0 standard liters/min N <sub>2</sub> @ 50 psig
Max Liquid Flow <sup>2</sup>	7 g/min (TEOS or equivalent)
System Pressure Limit	150 psig
Compressed Air	90 to 110 psig
Temperature Range <sup>3</sup>	40°C to 180°C
Temperature Sensor	2 type K thermocouples

<sup>1</sup> Max Carrier Flow, Heater Power (W) and Line Voltage are factory adjustable, visit [www.tsi.com/contact](http://www.tsi.com/contact) to request more information.

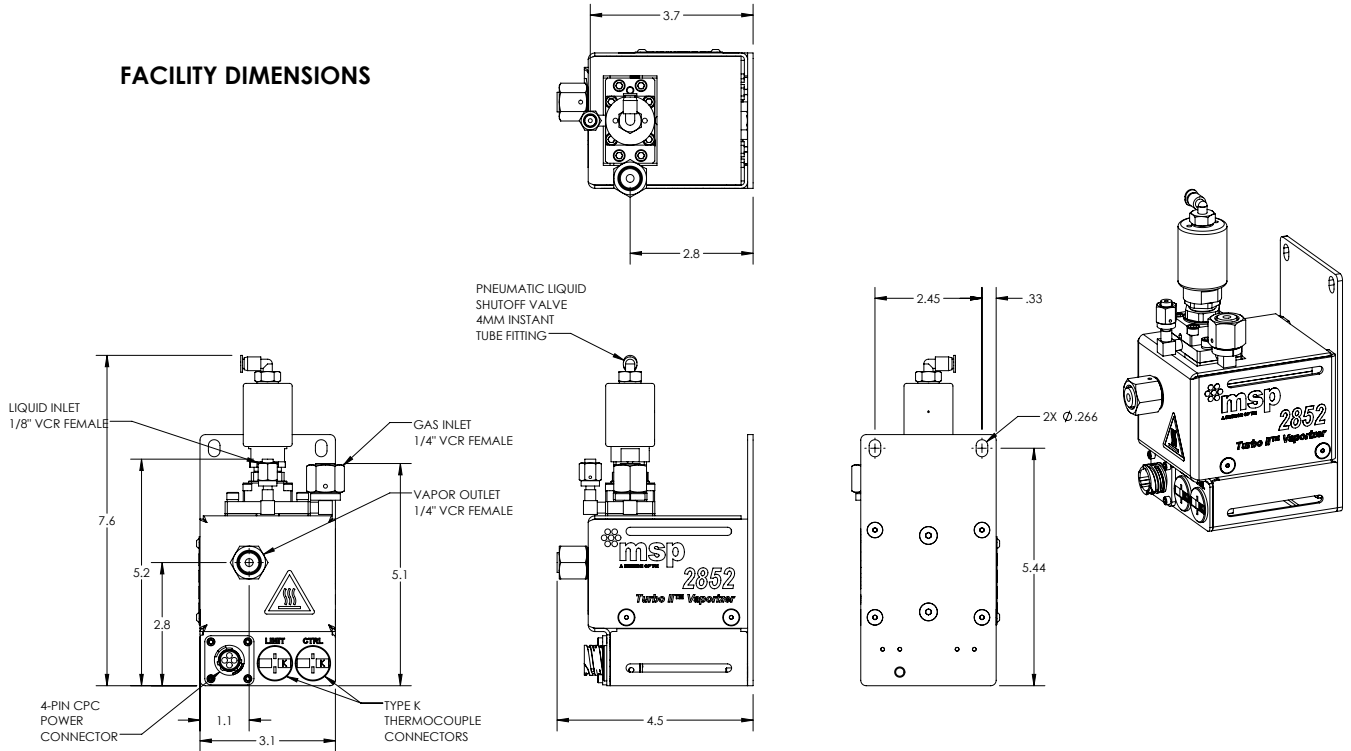
<sup>2</sup> Max. liquid flow is process dependent. The spec assumes a vaporizer temperature of 180°C, max. carrier gas flow and pressure <50 Torr immediately downstream of the vaporizer.

<sup>3</sup> Appropriate venting is required.

# MSP Turbo II™ Vaporizer

## Model 2852NP

### FACILITY DIMENSIONS



All specifications are subject to change without notification.

ELGILOY® Registered Trademark of Elgiloy Specialty Metals.

The MSP logo is a trademark of MSP Corporation.  
 TSI and the TSI logo are registered trademarks of TSI Incorporated.



MSP - Visit our website [www.tsi.com/msp](http://www.tsi.com/msp) for more information.

5910 Rice Creek Parkway, Suite 300  
 Shoreview, Minnesota  
 55126, U.S.A.  
 Tel: 651.287.8100