

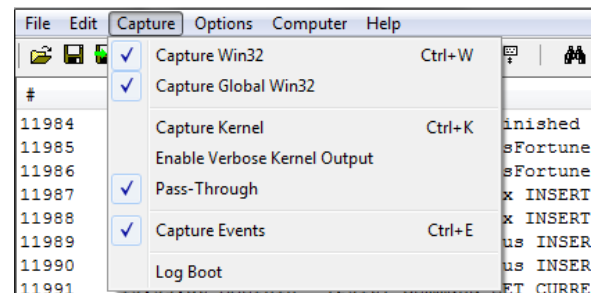
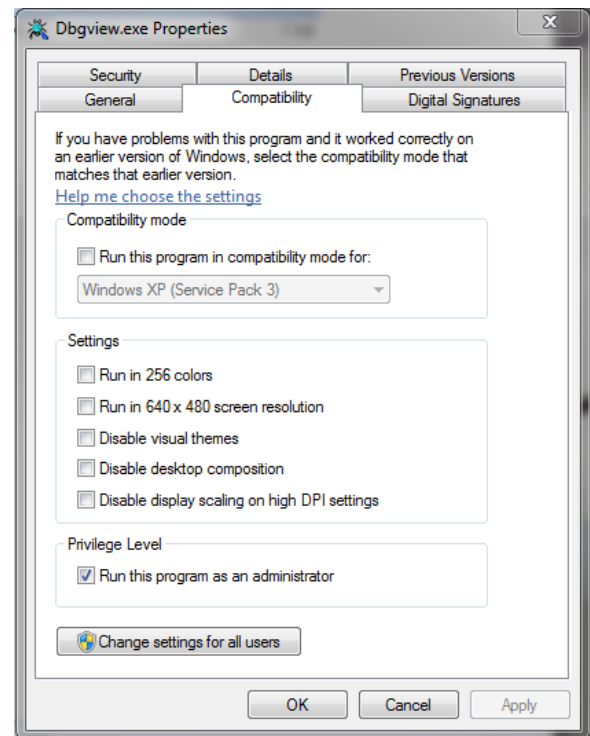
TSI® FMS 5 SOFTWARE

HOW TO CONFIGURE AND USE DEBUGVIEW WITH FMS

TECHNICAL BULLETIN TCC-118 (A4)

How to Configure and use DebugView with FMS

1. DebugView **always** needs to be run as administrator. It can be accomplished by one of two ways:
 - a. Right-click on Dbgview.exe and select **Run as administrator**.
 - b. Right-click on Dbgview.exe and select **Properties**.
 - i. Go to **Compatibility** tab.
 - ii. Enable **Run this program as an administrator**.
 - iii. Save and close properties. This will ensure DebugView is always run as administrator. In other words, you can double-click on Dbgview.exe and the program will run as administrator.
2. Once DebugView is launched, go to the Capture menu. Ensure at minimum Capture Win32, Capture Global Win32, and Capture Events are selected. On the safe side, you can select all to be captured. If Capture Global Win32 is grayed out or un-selectable, this means DebugView is not running with administrative privileges.



- For easier reading, have DebugView display the time of the message.

Correct:

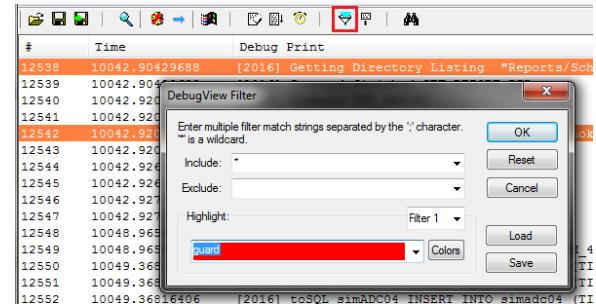
| # | Time | Debug Print |
|-------|------------------|------------------------------------|
| 12237 | 10:13:41 AMornin | [2016] Command GET_REPORT |
| 12238 | 10:13:41 AMornin | [2016] GET file "Reports/Schedule |
| 12239 | 10:13:41 AMornin | [2016] Command finished GET_REPORT |
| 12240 | 10:13:41 AMornin | [2016] Command GET_REPORT |

Incorrect:

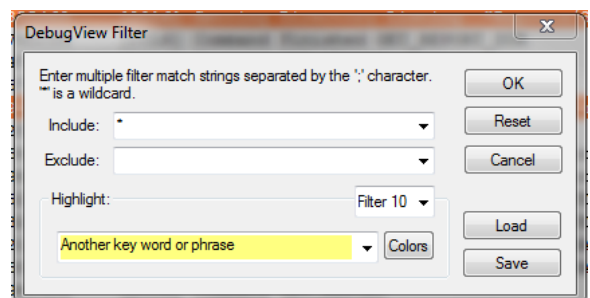
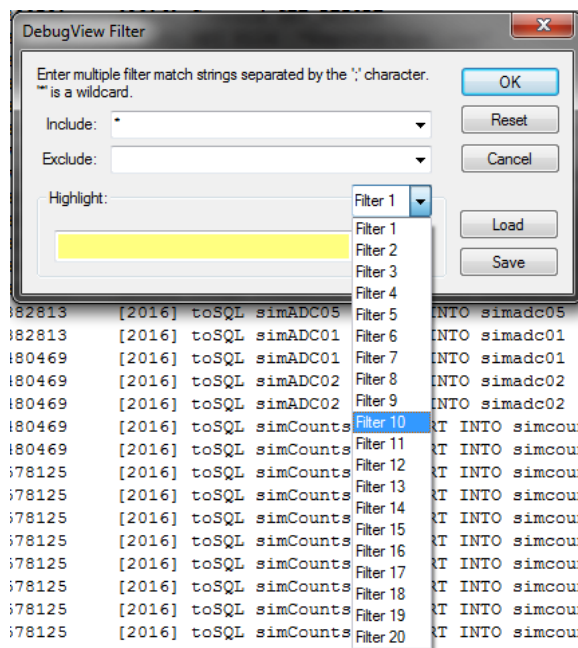
| # | Time | Debug Print |
|-------|---------------|--------------------------------|
| 12377 | 9922.18847656 | [2016] Receive 0 2 |
| 12378 | 9922.18945313 | [2016] CintQt Trace 2015-04-22 |
| 12379 | 9922.87304688 | [2016] Command GET_REPORT DIR |

- How to highlight specific strings:

- Select the **filter** button. Enter the text within the **colored text box** that you wish to be highlighted. In the image shown, any line that contains the word "guard" will be highlighted in red.



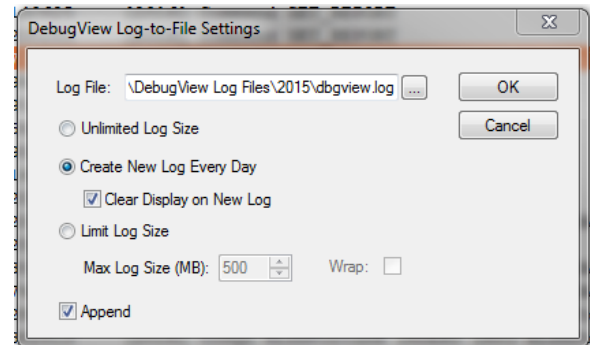
- To have multiple lines highlight in different colors, drop down the filter box and select a new color. Then enter in the keyword within the colored text box.



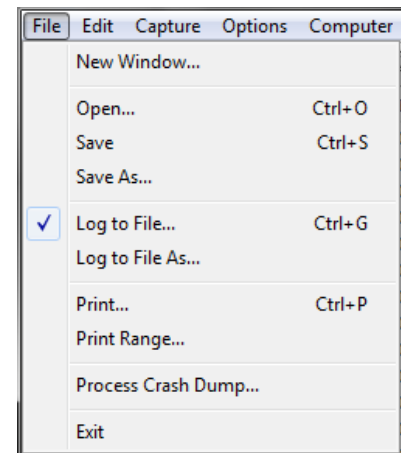
5. How to log DebugView to disk.

- a. Go to **File | Log To File (As)...**
- b. Select the ... button to navigate to the folder you want DebugView to log the files to. For example, create a folder on the desktop named DBLogFiles.
- c. Ensure **Create New Log Every Day** and **Clear Display on New Log** are selected. By enabling **Clear Display on New Log**, every day at midnight DebugView will clear its window of all messages to free up memory.

- d. Ensure **Append** is selected. What this does is in the case of DebugView restart or a computer restart, when DebugView is re-launched it will append new items to the end of the log file on disk. Otherwise if **Append** is not selected, upon a DebugView re-launch, it will clear all contents of the file on disk and start anew.



- e. You will know DebugView is logging to disk if the **Log to File...** is checked under **File**. Otherwise, you can open the log file to see its contents being populated.
- f. **!!!IMPORTANT!!!** Every time DebugView is launched, you will need to re-select **Log to File...** and tell it to **Create New Log Every Day and Clear Display on New Log**. It is best practice to check that all settings in this document are configured at every DebugView launch.



TSI and TSI logo are registered trademarks of TSI Incorporated.



TSI Incorporated – Visit our website www.tsi.com for more information.

| | | | |
|---------|------------------------|-----------|-----------------------|
| USA | Tel: +1 800 874 2811 | India | Tel: +91 80 67877200 |
| UK | Tel: +44 149 4 459200 | China | Tel: +86 10 8219 7688 |
| France | Tel: +33 1 41 19 21 99 | Singapore | Tel: +65 6595 6388 |
| Germany | Tel: +49 241 523030 | | |