

# TSI POWERVIEW™ 630134 6MP CAMERA

TSI PowerView™ 6MP Camera is a multi-bit, 6-megapixel, digital CCD camera designed exclusively for global flow measurements - Planar, PIV, volumetric PIV and PLIF. It offers 2756 x 2208 pixel resolution, operates at 20 frames per second at full resolution with 12-bit output. With the extremely low noise level and high signal quality, it can image large flow fields with very high resolution.



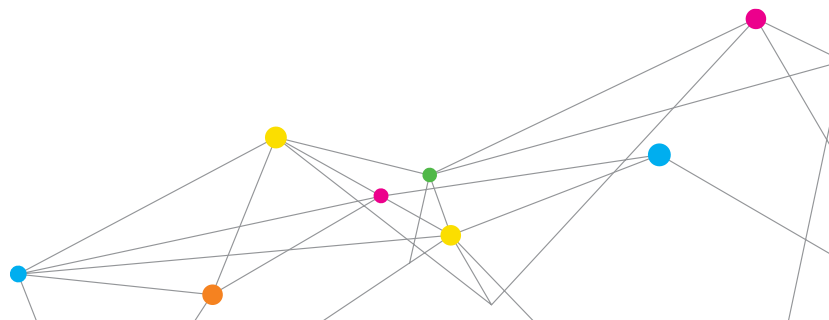
The camera is designed with a defective/hot pixel correction dynamically to ensure all the pixels are used for your imaging requirement to get the accurate flow measurements. Other features, such as short frame straddling times and high quantum efficiency, make it appropriate for a wide variety of applications ranging from hypersonic to creeping flows. The 6MP camera is fitted with an F-mount lens mount and comes standard with a Nikon® 50-mm lens, camera interface and all interface cables.

The camera is supported by the industrial standard Cameralink frame grabber which offers high data throughput to ensure all images can be transferred. Multiple camera arrangement can be configured for stereoPIV or volumetric PIV for 2D3C or 3D3C flow measurement.

The Model 630134 camera is a complete system including the camera, frame grabber interface, power supply, frame grabber cables, trigger cables, 50 mm camera lens and instruction manual.



UNDERSTANDING, ACCELERATED



# SPECIFICATIONS

## TSI POWERVIEW™ 6MP CAMERA

Description	Specifications
Image Device	CCD sensor with microlens
Pixel Resolution	2756 x 2208 pixels
Pixel Size	4.54 $\mu\text{m}$ x 4.54 $\mu\text{m}$
Image Size	12.51 mm x 10.02 mm
Intensity Dynamics Range	12 -bit
Frame Rate	20 fps (up to 25 fps at overclock)
Gain Control	Analog gain and digital gain
Quantum Efficiency	55% (590 nm)
Pixel Clock Rate	40 MHz
Frame Straddle Time	< 200 ns
Lens Mount	Nikon® F-Mount
Camera Interface	Dual cameralink frame grabber
Standard Camera Lens	Nikon® 50 mm F1.8 lens

Nikon® is a registered trademark of Nikon Company.

Specifications are subject to change without notice.  
TSI and TSI logo are trademarks of TSI Incorporated.



UNDERSTANDING, ACCELERATED

**TSI Incorporated** - Visit our website [www.tsi.com](http://www.tsi.com) for more information.

<b>USA</b>	<b>Tel:</b> +1 800 874 2811	<b>India</b>	<b>Tel:</b> +91 80 67877200
<b>UK</b>	<b>Tel:</b> +44 149 4 459200	<b>China</b>	<b>Tel:</b> +86 10 8219 7688
<b>France</b>	<b>Tel:</b> +33 1 41 19 21 99	<b>Singapore</b>	<b>Tel:</b> +65 6595 6388
<b>Germany</b>	<b>Tel:</b> +49 241 523030		