

FLOW CALIBRATORS

MODELS 4048 AND 4148

TSI Flow Calibrators are essential accessories for condensation particle counters and filter testers. The readings provided by the CPCs and filter testers are dependent on the flow rate of the internal pump. Flow calibrators are a small, simple and portable flow measuring device ideal for verifying flow rates of internal pumps.

TSI offers two flow calibrator models for measuring inlet flows on CPCs and filter testers long with any other internal pump instruments. These easy-to-use, handheld units can be powered through the included battery pack or via the included universal power supply allowing for portable or benchtop use. The volumetric flow rate is continuously displayed allowing for fast and easy confirmation of the inlet flow displayed on the unit. The flow calibrators are temperature-compensated and pressure-corrected allowing calculated volumetric flow readings to have an accuracy of $\pm 2\%$ of reading.



MODEL 4048

Features and Benefits

- + Flow Range: 0-200 L/min
- + Display update rate: 1 second
- + Powered using included battery pack or included universal power supply
- + Comes with tubing kit needed to connect to TSI Filter Testers
- + Includes filter adapters for pressured applications
- + Comes in kit ready for immediate use

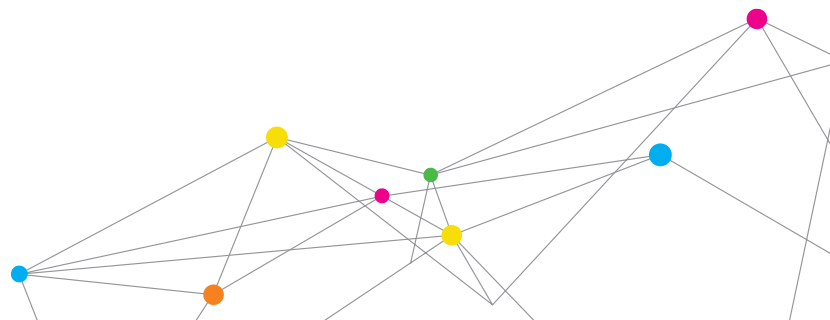
MODEL 4148

Features and Benefits

- + Flow range: 0-20 L/min
- + Display update rate: 1 second
- + Powered using included battery pack or included universal power supply
- + Included conductive tubing to connect filter to meter to eliminate any particles coming from meter
- + Comes in kit ready for immediate use



UNDERSTANDING, ACCELERATED



SPECIFICATIONS

FLOW CALIBRATORS MODELS 4048 AND 4148



	Model 4048	Model 4148
Flow Measurement Range	0 to 200 L/min	0 to 20 L/min
Accuracy	+2% or 0.05 L/min, whichever is greater	+2% or 0.005 L/min, whichever is greater
Dimensions (H x W x D)	7.2 in. x 2.5 in. x 2.1 in. (18.3 cm x 6.4 cm x 5.3 cm)	5 in. x 2 in. x 1.25 in. (12.7 cm x 5 cm x 3.2 cm)

MODEL 4048

Kit includes:

- + Flow calibrator
- + Inlet filter
- + Tubing kit with adapters
(see Owner's Manual for tubing kit dimensions and lengths)
- + Battery pack with 6 AA batteries
- + Universal power supply
- + Carrying case
- + Owner's manual
- + Certificate of Calibration



MODEL 4148

Kit includes:

- + Flow calibrator
- + Inlet filter
- + 3" conductive tubing to connect filter to calibrator
- + Battery pack with 6 AA batteries
- + Universal power supply
- + Carrying case
- + Owner's manual
- + Certificate of Calibration



Specifications are subject to change without notice.

TSI and the TSI logo are registered trademarks of TSI Incorporated.



UNDERSTANDING, ACCELERATED

TSI Incorporated - Visit our website www.tsi.com for more information.

USA Tel: +1 800 874 2811
UK Tel: +44 149 4 459200
France Tel: +33 1 41 19 21 99
Germany Tel: +49 241 523030

India Tel: +91 80 67877200
China Tel: +86 10 8219 7688
Singapore Tel: +65 6595 6388