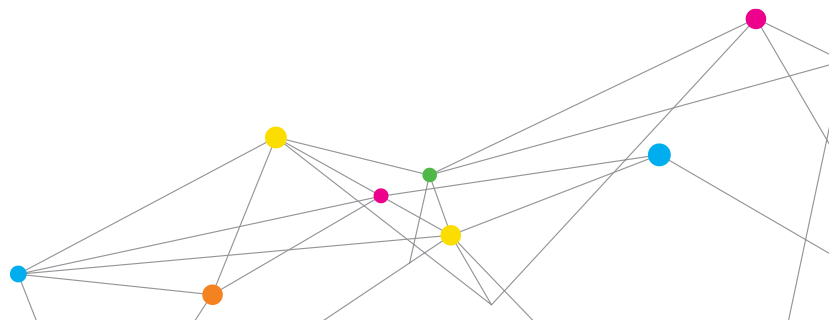


TURBO-VAPORIZER™ MODEL 2841PE

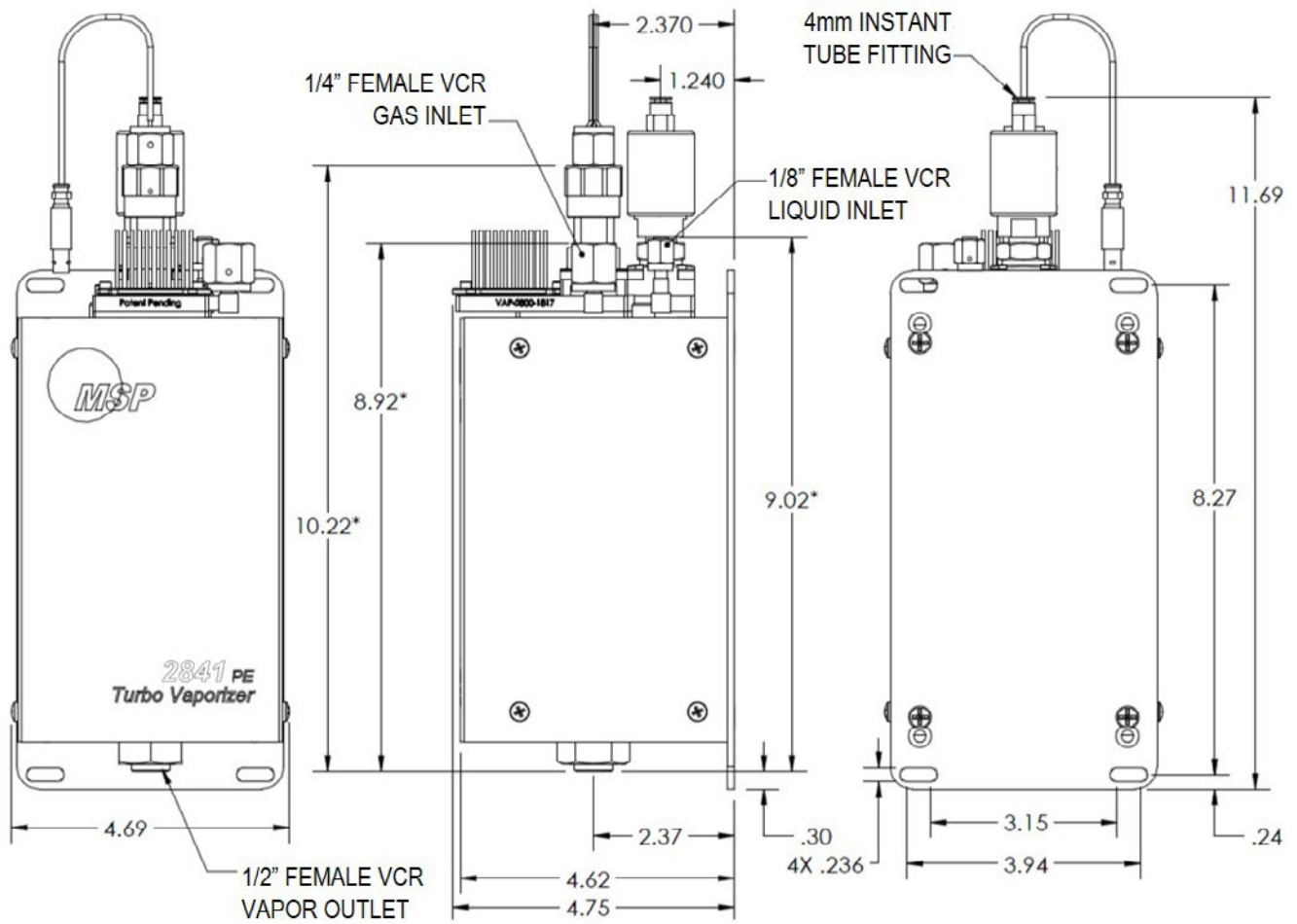
MSP's 2841PE Turbo-Vaporizer was designed for high flow water vapor. It has the state-of-the-art Performance Enhanced (PE) atomizer with on-board flow control and dual heaters to compensate for evaporating cooling at high water flow.



Dimensions:	297 mm x 119 mm x 122 mm (11.7 inch x 4.7 inch x 4.8 inch)
Weight:	7.2 kg (15.8 lb)
Fittings (on the unit):	
Carrier Gas Inlet:	1/4 inch VCR female split nut
Liquid Inlet:	1/8 inch VCR female
Vapor Outlet:	1/2 inch VCR female
Compressed Air	4 mm instant tube fitting
Wetted Parts:	SS 316, PEEK, PCTFE, Elgiloy®, Kalrez®, PTFE
Leak Integrity:	< 1x 10 ⁻⁹ scc/sec Helium
Heater Power Requirements:	208 V _{AC} , 60 Hz, 500W
Carrier Gas:	Inert gas recommended
Max Carrier Gas Flow:	15 standard liters/min N ₂ (0 - 80 psig inlet pressure)
Max Liquid Flow Rate:	3,000 g/hr. (TEOS or equivalent) 300 g/hr. (H ₂ O or equivalent)
System Pressure Limit:	120 psig
Compressed Air:	90 to 110 psig
Temperature Range:	40° C to 160° C 160° C to 200° C with optional piezo cooling package
Temperature sensor:	2 type K thermocouples
Vaporizer Body:	Vacuum tight chamber with multi-stage heat exchanger, SS 316 construction



TURBO-VAPORIZER MODEL 2801PE



All specifications are subject to change without notification.

Turbo-Vaporizer is a trademark, and MSP, the MSP logo and TSI are registered trademarks of TSI Incorporated.



MSP - Visit our website www.mspcorp.com for more information.

5910 Rice Creek Parkway, Suite 300
 Shoreview, Minnesota
 55126, U.S.A.
Tel: 651.287.8100