

Standard Accessory Kit

5200 Series



Quick Start Guide

P/N 6011692, Revision B
May 2023





5200 Series Standard Accessory Kit (52000)

Kit Components




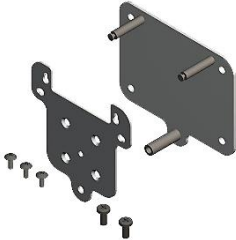


TSI® Part Number	Description	Picture
5200-025IN	5200 Series 1/4-inch Tube Ends (2)	
5200-10MM	5200 Series 10-mm Tube Ends (2)	
5200-IF-0375IN	5200 Series Inlet Filter 3/8-inch—Low Pressure	
5200-IF-025IN	5200 Series Inlet Filter 1/4-inch—Low Pressure	
5000-USBC-A	5000 Series USB-C to USB-A Power and Communications Cable (6 ft.)	

TSI® Part Number	Description	Picture
5000-UPS	5000 Series Universal Power Supply	
5000-HUB	5000 Series USB Hub Cable	

5200 Series Optional Accessories

TSI® Part Number	Description	Picture
5200-EC	5200 Series End Caps (2)	
5200-C	5200 Series Collars (2)	

5000 Series Optional Accessories

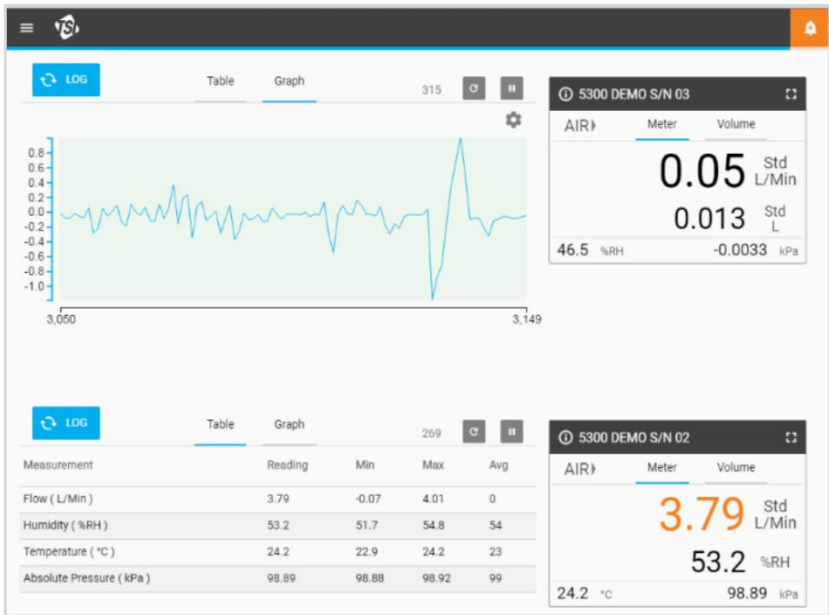
TSI® Part Number	Description	Picture
5000-TTS	5000 Series Tabletop Stand	 <p>A tan-colored metal tabletop stand with a flat top surface and a curved base. Three screws are shown below the stand.</p>
5000-RS232	5000 Series USB-RS232 Cable with Null Modem Converter	 <p>A white cable with a blue USB-A connector on one end and a white RS-232 DB9 connector on the other. A small white null modem converter module is attached to the RS-232 connector.</p>
5000-USB-LOCK	5000 Series USB-C to USB-A Cable with Screw Lock (Includes reversible head screwdriver)	 <p>A black cable with a USB-C connector on one end and a USB-A connector on the other. A small screwdriver with a reversible head is shown next to the cable.</p>
5000-WMK	5000 Series Wall Mounting Kit	 <p>A metal wall mounting kit consisting of two L-shaped brackets, four screws, and two long screws.</p>
5000-WMDRK	5000 Series Wall Mounting DIN Rail Kit	 <p>A metal wall mounting kit consisting of two L-shaped brackets, four screws, and two DIN rail components.</p>
5000-DCC	5000 Series Deluxe Carrying Case	 <p>A blue and grey carrying case with a handle and a TSI logo on the front.</p>
5000-PC-ADV	5000 Series PC Software (Advanced version)	See following page for more details

FLO-Sight™ PC Software

Get the most out of your 5000 Series Gas Flow Multi-Meter with TSI® Incorporated's FLO-Sight™ PC Software.

Couple the real-time data visualization of FLO-Sight™ PC software with the fast response rate of our 5000 Series Flow Meters to gain valuable insights and truly understand your flows.

See your flows as you have never seen them before with FLO-Sight software.



FLO-Sight software has these basic features:

- Real-time display of all measurement parameters
- Min, max, and average readings
- Advanced meter configuration
- Volume measurements with user-set begin/end triggers (5210, 5220, 5230 models only)

FLO-Sight™ PC Software *(continued)*

FLO-Sight™ software advanced features include:

- Real-time graphing
- Data logging, download, and file management
- Alerts set for any parameter
- Multiple meter operation

A free trial of FLO-Sight™ software's advanced features is included with the Series 5200 Multi-Meter. The advanced version can be purchased through the software itself or at www.tsi.com.

Technical Support

For further information/customer support, please contact:

U.S. & INTERNATIONAL

Sales and Customer Service:

(800) 680-1220 / +1 (651) 490-2860

Fax:

+1 (651) 490-3824

TSI Instruments Ltd. (UK)

Sales and Customer Service:

+44 (0) 1494 459200

Email:

answers@tsi.com

TSI and TSI logo are registered trademarks of TSI Incorporated in the United States and may be protected under other country's trademark registrations.



Knowledge Beyond Measure.

TSI Incorporated – Visit our website www.tsi.com for more information.

USA Tel: +1 800 680 1220
UK Tel: +44 149 4 459200
France Tel: +33 1 41 19 21 99
Germany Tel: +49 241 523030

India Tel: +91 80 67877200
China Tel: +86 10 8219 7688
Singapore Tel: +65 6595 6388

