



® Knowledge
Beyond
Measure.



Real-Time Aerosol Monitoring for Workplace and Environmental Applications

The **DustTrak™** Aerosol Monitor Family for Surveys,
Investigations, and Continuous Monitoring



Supporting Compliance with Real-Time Exposure Insights

DustTrak™ aerosol monitors deliver real-time particle mass concentration readings for dust, smoke, fumes, and mist, supporting industrial hygienists and safety professionals with immediate, actionable exposure data. Designed to help meet regulatory requirements and sustainability objectives, DustTrak™ monitors enable efficient evaluation of workplace conditions across diverse settings — from harsh industrial and environmental sites to clean office spaces. By providing prompt and clear exposure insights, they assist in risk management, streamline reporting, and help you maintain a healthier workplace.

The advanced DustTrak™ DRX models use patented technology to provide simultaneous real-time particle mass measurement across multiple size fractions, supporting more detailed assessment of particulate exposures. This portfolio features battery-operated, data-logging instruments with robust optics technology designed to help reduce maintenance and support reliable performance during extended monitoring periods.

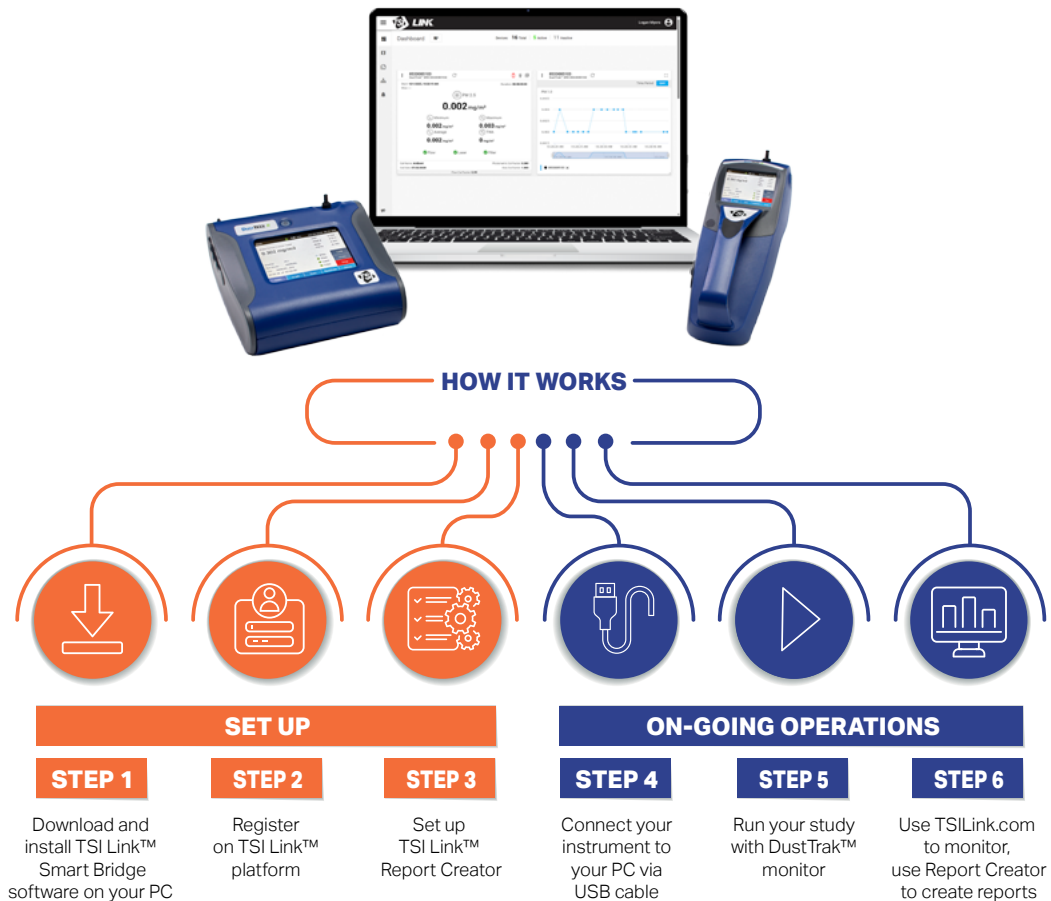
With a range of models, DustTrak™ monitors adapt to your facility's unique needs, helping you address complex regulatory challenges related to particulate matter in workplace environments.

Versatile Monitoring Solutions for Industrial Hygienists

- Handheld (DustTrak™ II 8532/DRX 8534 models): Designed for quick walk-through surveys, spot checks, and immediate exposure assessments.
- Desktop (DustTrak™ II 8530/DRX 8533 models): Built for longer-term area monitoring, process analysis, and connection to existing monitoring infrastructure
- DustTrak™ Environmental Enclosure (8535): Engineered for continuous outdoor deployment, offering resilient environmental monitoring with a customized enclosure and reliable accessories.



TSI Link™ Smart Bridge



Live Data, Cloud Access, and Faster Reporting

DustTrak™ monitor's connectivity and reporting tools help users stream live data, organize studies in the cloud, and simplify reporting for both indoor and outdoor monitoring applications.

TSI Link™ Smart Bridge Workflow

TSI Link™ Smart Bridge transforms your DustTrak™ aerosol monitors into an advanced system for real-time exposure insights. The software enables live data streaming from your DustTrak™ monitor to the cloud through a connected Windows device. You can then organize your studies within the TSI Link™ Cloud, making critical data readily available for review, export, and streamlined reporting. This powerful workplace monitoring solution helps you optimize industrial hygiene protocols and supports regulatory compliance.

Outdoor Remote Telemetry

For comprehensive outdoor deployments, the DustTrak™ Environmental monitor pairs with the Thiamis cellular modem and Environet platform to deliver robust remote monitoring. This integration helps you access live data, receive custom threshold alarms, and verify site status without needing a physical presence on location. By delivering immediate notifications when particulate levels shift, this setup assists your team in taking proactive steps to support environmental health and safety.

- Establish remote cellular connectivity for uninterrupted data access.
- Gain real-time outdoor visibility to support perimeter and worker safety.
- Utilize cloud-based access to review historical data and immediate alerts.



Built for a Wide Range of Monitoring Applications

From industrial hygiene surveys to outdoor perimeter monitoring, **DustTrak™** instruments support real-time particulate measurement across diverse environments. These versatile tools assist occupational health and safety managers in streamlining compliance, analyzing real-time exposure insights, and supporting overall workplace safety.

Industrial Hygiene

Assist your team with accurate data collection. **DustTrak™** monitors support real-time exposure assessments, quick walk-through surveys, and detailed engineering control evaluations to help reduce workplace risks.

Indoor Air Quality

Support your corporate sustainability goals and help elevate employee safety satisfaction. Use our instruments for reliable baseline checks, detailed investigations, and continuous trend monitoring to help improve indoor environmental metrics.

Construction and Remediation

Enable effective dust control programs and support your regulatory compliance efforts. **DustTrak™** solutions provide robust perimeter monitoring, precise site activity tracking, and reliable data to help you manage local environmental standards.

Environmental and Research

Facilitate comprehensive outdoor studies with resilient monitoring technology. Our instruments support advanced aerosol research, customized reporting features, and longer-term area monitoring with seamless system integration.

The DustTrak™ Family: Solutions for Every Environment

From quick walk-through surveys to continuous monitoring and advanced size-segregated measurement, the **DustTrak™** family provides a resilient solution for a wide range of particulate monitoring needs. Each instrument is designed to support your regulatory compliance, improve operational efficiency, and elevate workplace safety.

Handheld Models

Designed for portable, real-time monitoring, these compact instruments assist occupational health and safety managers with industrial hygiene surveys, indoor air quality assessments, and quick investigations. They provide immediate insight into localized conditions to help reduce the risk of unexpected exposures.

Desktop Models

Built for longer-term area and process monitoring, the desktop units provide continuous, real-time data collection for workplace and industrial monitoring applications, with support for connection to existing monitoring infrastructure.

Desktop With External Pump

Engineered for demanding applications, this model supports longer-term remote deployments. It pairs with customized accessory options to assist with environmental use and rigorous outdoor monitoring protocols.

Outdoor Enclosures

The Model 8535 Environmental Enclosure helps secure compatible **DustTrak™** desktop monitors for unattended, continuous outdoor deployment. Built for harsh industrial environments, this customized setup supports reliable data collection regardless of challenging weather conditions.

Advanced DRX Models

Available in handheld, desktop, and external pump configurations (Models 8534, 8533, and 8533EP), the advanced **DustTrak™** DRX instruments provide simultaneous, size-segregated mass measurement. They allow you to measure multiple particulate size fractions in a single device, offering a streamlined approach to detailed air quality analysis and comprehensive risk management.





Configured for Outdoor Deployment

Accessories and connectivity options support resilient outdoor deployment and longer-term area monitoring. These robust tools assist occupational health and safety managers in maintaining regulatory compliance and evaluating environmental metrics in harsh conditions.

Environmental Enclosure

Resilient Outdoor Deployment

The Model 8535 Environmental Enclosure is designed to support compatible DustTrak™ desktop monitors for unattended outdoor monitoring. It helps shield equipment from harsh weather elements to enable continuous, reliable data collection.

Heated Inlet

Reduced Humidity Effects

The heated inlet sample conditioner helps reduce humidity effects on photometric mass measurements during outdoor sampling, which assists in delivering accurate, real-time exposure insights.

AutoZero Module

Improved Long-Term Stability

The AutoZero module helps minimize the effect of zero drift during extended monitoring periods. This supports consistent baseline checks and reliable trend tracking over time.

Remote Outdoor Visibility

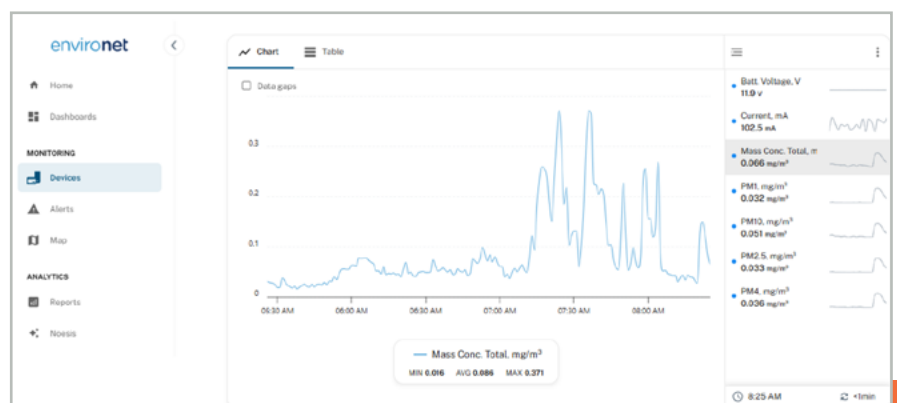
Remote Real-Time Access

When paired with the Thiamis cellular modem and Environet platform, DustTrak™ solutions support remote, real-time monitoring and data visibility. This seamless system integration helps you monitor site activity and respond to elevated particulate levels without requiring an on-site presence.

Power Options

Extended Battery Operation

Dual 22 amp-hour batteries support up to 12 hours of operation for fully configured outdoor monitoring setups. This extended power capacity helps streamline operations for full-shift assessments and environmental studies (can also operate with continuous AC power where available.)



A Photometric Approach to Real-Time Mass Measurement

DustTrak™ aerosol monitors use a photometric measurement principle to deliver real-time particulate mass concentration data. This capability assists occupational health and safety managers in gaining immediate exposure insights. Patented DustTrak™ DRX technology builds on this foundation, applying it across multiple size fractions simultaneously to support comprehensive risk management and targeted air quality analysis.

Built on Photometry

DustTrak™ measures particulate mass concentration in real time using the intensity of scattered light. This responsive technology supports the accurate measurement of changing aerosol conditions, helping you maintain regulatory compliance and optimize facility efficiency.

Designed for Real-World Conditions

The instrument captures rapid concentration changes, handles sustained dust loading, and measures high, short-duration burst events without saturating. This resilient design helps reduce the risk of missed data during critical industrial hygiene monitoring events.

Advanced by DRX

Patented DustTrak™ DRX technology extends the photometric approach across multiple size fractions simultaneously. This advanced capability provides deeper particulate insight in real time, empowering your team to evaluate air quality metrics and support corporate sustainability goals.

Arizona Road Dust Factory Calibration

Each monitor is calibrated to ISO 12103-1 A1 Arizona Test Dust. We selected this standard for its broad particle size distribution and its ability to represent a wide range of ambient aerosol conditions. User-selectable calibration options help align performance more closely to site-specific conditions, enabling highly customized reporting features and seamless data integration.



Choose the DustTrak™ Model That Fits Your Application

From walk-through surveys to continuous outdoor monitoring, the DustTrak™ family offers options for a wide range of particulate monitoring needs.

Model	When to Choose	Key Use Cases	Unique Advantage and Model Recommendation
Handheld (Model 8532/8534)	For fast, portable assessments at multiple sites	Spot checks, walk-through surveys	Compact, highly portable, and quick to deploy. Ideal for rapid exposure assessments and industrial hygiene surveys. Recommended: 8532 (single channel) or 8534 (DRX multi channel)
Desktop (Model 8530/8533)	For stationary, continuous indoor monitoring	Area trend tracking, process monitoring	Designed for reliable, unattended operation with continuous real-time data logging for longer-term area monitoring. Recommended: 8530 (single-channel) or 8533 (DRX, multi-channel)
Desktop, Ext. Pump (Models 8530EP/8533EP)	For longer-term area and remote monitoring	Remote deployments, continuous long-term applications	Pairs with purpose-built accessories to enable configuration for long-term outdoor monitoring. Recommended: 8530EP (single-channel) or 8533EP (DRX, multi-channel)
Outdoor Enclosure (Model 8535)	For harsh or exposed outdoor conditions	Outdoor tracking, environmental monitoring	Rugged, weather-resistant protection for reliable data in challenging environments. Designed to house desktop models for long-term area studies. Recommended: 8535 (Enclosure for 8530/8533/8533EP)
DRX Models (8533, 8533EP, 8534)	For detailed, simultaneous, multi-size particulate analysis	Complex studies, size-segregated measurement	Patented DRX technology delivers real-time, simultaneous multi-size fraction data for advanced analysis and deeper particulate insight. Recommended: 8533 (Desktop DRX), 8533EP (Desktop DRX Ext. Pump), or 8534 (Handheld DRX)

Key Takeaway

Choose Handheld models for quick, mobile assessments, Desktop units for continuous indoor area tracking, and External Pump or Outdoor Enclosure setups for demanding environmental studies. When you need detailed data across multiple particle sizes at once, the advanced DRX Models assist with comprehensive exposure insights.



TSI Incorporated - Visit our website www.tsi.com for more information.

USA	Tel: +1 800 874 2811	India	Tel: +91 80 67877200
UK	Tel: +44 149 4 459200	China	Tel: +86 10 8219 7688
France	Tel: +33 1 41 19 21 99	Singapore	Tel: +65 6595 6388
Germany	Tel: +49 241 523030		

Find out more
tsi.com/dust

TSI, the TSI logo are registered trademarks of TSI Incorporated in the United States and may be protected under other country's trademark registrations.