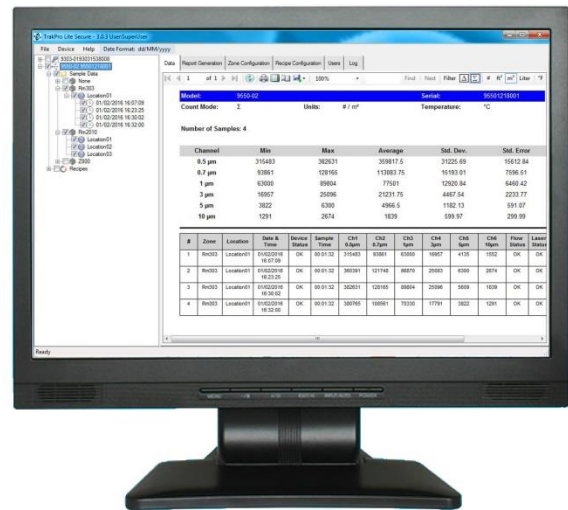




TRAKPRO™ LITE SECURE SOFTWARE VERSION 3.X

USER'S GUIDE

P/N 6004404, REVISION J
OCTOBER 2021



START SEEING THE BENEFITS OF REGISTERING TODAY!

Thank you for your TSI instrument purchase. Occasionally, TSI releases information on software updates, product enhancements and new products. By registering your instrument, TSI will be able to send this important information to you.

<http://register.tsi.com>

As part of the registration process, you will be asked for your comments on TSI products and services. TSI's customer feedback program gives customers like you a way to tell us how we are doing.



UNDERSTANDING, ACCELERATED

TSI Incorporated - Visit our website www.tsi.com for more information.

USA	Tel: +1 800 874 2811	India	Tel: +91 80 67877200
UK	Tel: +44 149 4 459200	China	Tel: +86 10 8219 7688
France	Tel: +33 1 41 19 21 99	Singapore	Tel: +65 6595 6388
Germany	Tel: +49 241 523030		

TRAKPRO™ LITE SECURE SOFTWARE VERSION 3.X

USER'S GUIDE

P/N 6004404, REVISION J
OCTOBER 2021

SHIP TO/MAIL TO:

TSI Incorporated
500 Cardigan Road
Shoreview, MN 55126-3996
USA

U.S.

Technical Support:

(800) 680-1220/(651) 490-2860

Fax:

(651) 490-3824

E-mail address:

answers@tsi.com

Website:

<http://www.tsi.com>

INTERNATIONAL

Technical Support:

(001 651) 490-2860

Fax:

(001 651) 490-3824

Manual History

The following is a manual history of the TrakPro™ Lite Secure Software User's Guide (P/N 6004404).

Revision	Date
A	June 2009
B	July 2010
C	September 2010
D	October 2012
E	November 2012
F	February 2016
G	December 2016
H	December 2019
J	October 2021

Warranty

Part Number

6004404 / Revision J / October 2021

Copyright

©TSI Incorporated / 2010-2021 / All rights reserved.

Address

TSI Incorporated / 500 Cardigan Road / Shoreview, MN 55126 / USA

E-mail Address

answers@tsi.com

**Limitation of Warranty
and Liability**

(effective April 2014)

(For country-specific terms and conditions outside of the USA, please visit www.tsi.com.)

Seller warrants the goods, excluding software, sold hereunder, under normal use and service as described in the operator's manual, to be free from defects in workmanship and material for 12 months, or if less, the length of time specified in the operator's manual, from the date of shipment to the customer. This warranty period is inclusive of any statutory warranty. This limited warranty is subject to the following exclusions and exceptions:

- a. Hot-wire or hot-film sensors used with research anemometers, and certain other components when indicated in specifications, are warranted for 90 days from the date of shipment;
- b. Pumps are warranted for hours of operation as set forth in product or operator's manuals;
- c. Parts repaired or replaced as a result of repair services are warranted to be free from defects in workmanship and material, under normal use, for 90 days from the date of shipment;
- d. Seller does not provide any warranty on finished goods manufactured by others or on any fuses, batteries or other consumable materials. Only the original manufacturer's warranty applies;
- e. This warranty does not cover calibration requirements, and seller warrants only that the instrument or product is properly calibrated at the time of its manufacture. Instruments returned for calibration are not covered by this warranty;
- f. This warranty is **VOID** if the instrument is opened by anyone other than a factory authorized service center with the one exception where requirements set forth in the manual allow an operator to replace consumables or perform recommended cleaning;
- g. This warranty is **VOID** if the product has been misused, neglected, subjected to accidental or intentional damage, or is not properly installed, maintained, or cleaned according to the requirements of the manual. Unless specifically authorized in a separate writing by Seller, Seller makes no warranty with respect to, and shall have no liability in connection with, goods which are incorporated into other products or equipment, or which are modified by any person other than Seller.

The foregoing is **IN LIEU OF** all other warranties and is subject to the **LIMITATIONS** stated herein. **NO OTHER EXPRESS OR IMPLIED WARRANTY OF FITNESS FOR PARTICULAR PURPOSE OR MERCHANTABILITY IS MADE. WITH RESPECT TO SELLER'S BREACH OF THE IMPLIED WARRANTY AGAINST INFRINGEMENT, SAID WARRANTY IS LIMITED TO CLAIMS OF DIRECT INFRINGEMENT AND EXCLUDES CLAIMS OF CONTRIBUTORY OR INDUCED INFRINGEMENTS. BUYER'S EXCLUSIVE REMEDY SHALL BE THE RETURN OF THE PURCHASE PRICE DISCOUNTED FOR REASONABLE WEAR AND TEAR OR AT SELLER'S OPTION REPLACEMENT OF THE GOODS WITH NON-INFRINGING GOODS.**

TO THE EXTENT PERMITTED BY LAW, THE EXCLUSIVE REMEDY OF THE USER OR BUYER, AND THE LIMIT OF SELLER'S LIABILITY FOR ANY AND ALL LOSSES, INJURIES, OR DAMAGES CONCERNING THE GOODS (INCLUDING CLAIMS BASED ON CONTRACT, NEGLIGENCE, TORT, STRICT LIABILITY OR OTHERWISE) SHALL BE THE RETURN OF GOODS TO SELLER AND THE REFUND OF THE PURCHASE PRICE, OR, AT THE OPTION OF SELLER, THE REPAIR OR REPLACEMENT OF THE GOODS. IN THE CASE OF SOFTWARE, SELLER WILL REPAIR OR REPLACE DEFECTIVE SOFTWARE OR IF UNABLE TO DO SO, WILL REFUND THE PURCHASE PRICE OF THE SOFTWARE. IN NO EVENT SHALL SELLER BE LIABLE FOR LOST PROFITS, BUSINESS INTERRUPTION, OR ANY SPECIAL, INDIRECT, CONSEQUENTIAL OR INCIDENTAL DAMAGES. SELLER SHALL NOT BE RESPONSIBLE FOR INSTALLATION, DISMANTLING OR REINSTALLATION COSTS OR CHARGES. No Action, regardless of form, may be brought against Seller more than 12 months after a cause of action has accrued. The goods returned under warranty to Seller's factory shall be at Buyer's risk of loss, and will be returned, if at all, at Seller's risk of loss.

Buyer and all users are deemed to have accepted this LIMITATION OF WARRANTY AND LIABILITY, which contains the complete and exclusive limited warranty of Seller. This LIMITATION OF WARRANTY AND LIABILITY may not be amended, modified or its terms waived, except by writing signed by an Officer of Seller.

Service Policy

Knowing that inoperative or defective instruments are as detrimental to TSI as they are to our customers, our service policy is designed to give prompt attention to any problems. If any malfunction is discovered, please contact your nearest sales office or representative, or call TSI's Customer Service department at 1-800-680-1220 (USA) or +001 (651) 490-2860 (International).

Software License (effective March 1999)

This is a legal agreement between you, the end user, and TSI Incorporated. BY INSTALLING THE SOFTWARE, YOU ARE AGREEING TO BE BOUND BY THE TERMS OF THIS AGREEMENT. IF YOU DO NOT AGREE TO THE TERMS OF THIS AGREEMENT, PROMPTLY RETURN THE UNOPENED PACKAGE AND THE ACCOMPANYING ITEMS (including written materials and binders or other containers) to TSI for a full refund. TSI SOFTWARE TERMS

1. GRANT OF LICENSE. TSI grants to you the right to use one copy of the enclosed TSI software program (the "SOFTWARE"), on a single computer. You may not network the SOFTWARE or otherwise use it on more than one computer or computer terminal at the same time.
2. COPYRIGHT. The SOFTWARE is owned by TSI and is protected by United States copyright laws and international treaty provisions. Therefore, you must treat the SOFTWARE like any other copyrighted material (e.g., a book or musical recording) except that you may either (a) make one copy of the SOFTWARE solely for backup or archival purposes, or (b) transfer the SOFTWARE to a single hard disk provided you keep the original solely for backup or archival purposes.
3. OTHER RESTRICTIONS. You may not rent or lease the SOFTWARE, but you may transfer the SOFTWARE and accompanying written material on a permanent basis, provided you retain no copies and the recipient agrees to the terms of this Agreement. You may not reverse-engineer, decompile, or disassemble the SOFTWARE.
4. DUAL MEDIA SOFTWARE. If the SOFTWARE package contains multiple types of media, then you may use only the media appropriate for your single-user computer. You may not use the other media on another computer or loan, rent, lease, or transfer them to another user except as part of the permanent transfer (as provided above) of all SOFTWARE and written material.
5. U.S. GOVERNMENT RESTRICTED RIGHTS. The SOFTWARE and documentation are provided with RESTRICTED RIGHTS. Use, duplication, or disclosure by the Government is subject to the restrictions set forth in the "Rights in Technical Data and Computer Software" Clause at 252.22C-7013 and the "Commercial Computer Software - Restricted Rights" clause at 52.22C-19.
6. LIMITED WARRANTY. TSI warrants that the SOFTWARE will perform substantially in accordance with the accompanying written materials for a period of ninety (90) days from the date of receipt.
7. CUSTOMER REMEDIES. TSI's entire liability and your exclusive remedy shall be, at TSI's option, either (a) return of the price paid or (b) repair or replacement of the SOFTWARE that does not meet this Limited Warranty and which is returned to TSI with proof of payment. This Limited Warranty is void if failure of the SOFTWARE has resulted from accident, abuse, or misapplication. Any replacement SOFTWARE will be warranted for the remainder of the original warranty period or thirty (30) days, whichever is longer.
8. NO OTHER WARRANTIES. TSI disclaims all other warranties, either express or implied, including, but not limited to implied warranties of merchantability and fitness for a particular purpose, with regard to the SOFTWARE and the accompanying written materials.
9. NO LIABILITY FOR CONSEQUENTIAL DAMAGES. In no event shall TSI be liable for any damages whatsoever (including, without limitation, special, incidental, consequential or indirect damages for personal injury, loss of business profits, business interruption, loss of information or any other pecuniary loss) arising out of the use of, or inability to use, this SOFTWARE.

Trademarks

TSI, TSI logo, AeroTrak and BioTrak are registered trademarks of TSI Incorporated in the United States and may be protected under other country's trademark registrations. TrakPro is a trademark of TSI Incorporated. Microsoft and Excel are registered trademarks of Microsoft Corporation.

Contents

Manual History	ii
Warranty	iii
CHAPTER 1 Installing Software	1-1
System Requirements.....	1-1
Installation	1-1
CHAPTER 2 Setting Up and Using TrakPro Lite Secure Software	2-1
First Time Startup.....	2-1
Running TrakPro Lite Secure Software	2-3
Main Screen Layout	2-4
Tree View.....	2-4
Menu Items	2-6
File Menu.....	2-6
Device Menu.....	2-8
Menu.....	2-10
Data Tab	2-11
Monitoring Report Tab	2-14
Certification Report Tab.....	2-17
Zone Configuration Tab	2-19
Recipe Configuration Tab	2-22
User Tab	2-24
Administrative Privileges and Settings	2-25
Log Tab.....	2-27
CHAPTER 3 Device Connection	3-1
CHAPTER 4 Troubleshooting	4-1
CHAPTER 5 Contacting Customer Service	5-1
International Contacts	5-1
Technical Support.....	5-1

(This page intentionally left blank)

CHAPTER 1

Installing Software

The following devices are supported by the software:

- AeroTrak® Cleanroom Condensation Particle Counter Model 9001
- AeroTrak® Handheld Particle Counter Model 9303/9306
- AeroTrak® Portable Airborne Particle Counter Models 9310/9350/9500/9510/9550/9110
- BioTrak® Real-Time Viable Particle Counter Model 9510-BD

System Requirements

Hardware (minimum requirements):

- Intel Core 2 Duo 1.7 GHz, 1GB RAM, 20 GB of hard drive space, or minimum requirements for the operating system, whichever is higher. Free hard drive space depends on the amount of records to be stored.
- A free USB port.

Software (minimum requirements):

- Windows® 10 operating system 64-bit.
- Windows® .NET 3.5 or higher (included with our install package).

Installation

The TrakPro™ Lite Secure installer loads software and communications drivers for AeroTrak® Handheld and Portable Airborne Particle Counters and BioTrak® Real-Time Viable Particle Counters.

To download the software:

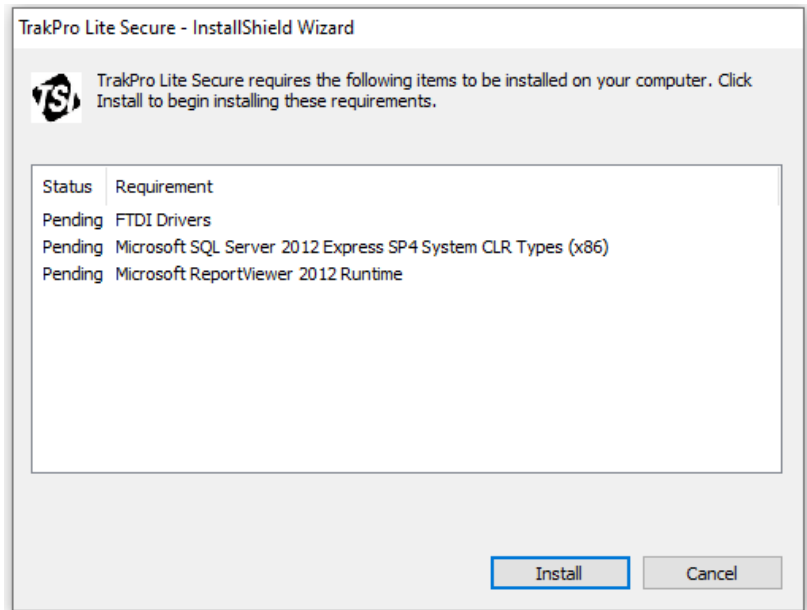
1. Access the TSI® website site at www.tsi.com and navigate to: **SUPPORT / TSI Software and Firmware Wizard** from your computer.
2. Enter the model number of your TSI® instrument into the search block and select the appropriate instrument description from the drop-down list.

3. Click the **“Search”** button.
4. Click the blue box with **“TRAKPRO LITE SECURE...”** The software installer package will be downloaded to the “Download” folder you have selected on your computer.

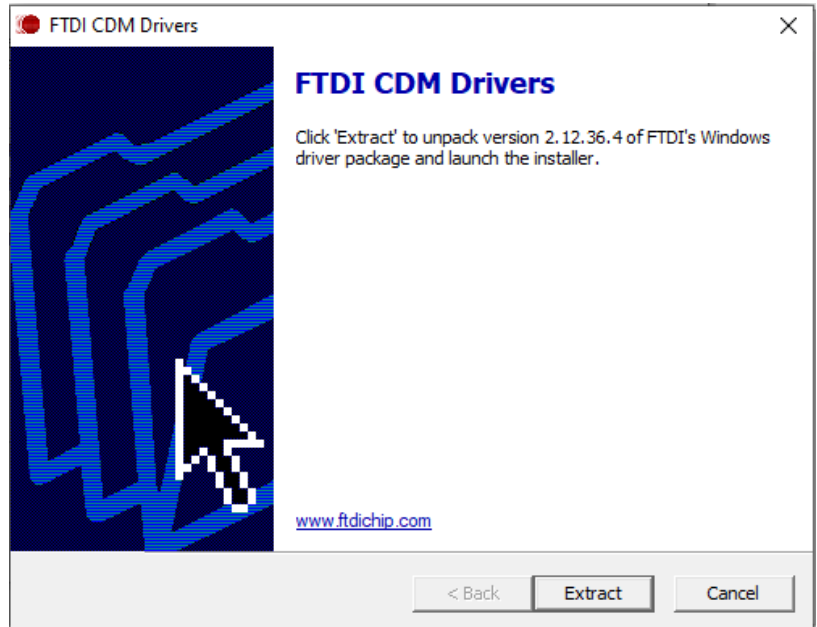
To install the software run the installer you just downloaded.

The software installer automatically installs the drivers needed for TSI® devices followed by TrakPro™ Lite Secure software as shown in the following screenshots.

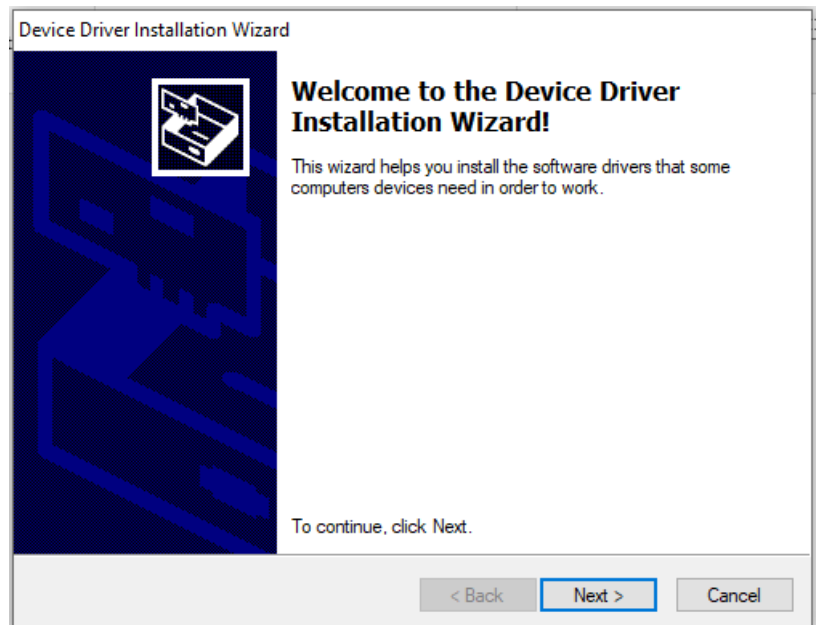
1. Select **Install**.



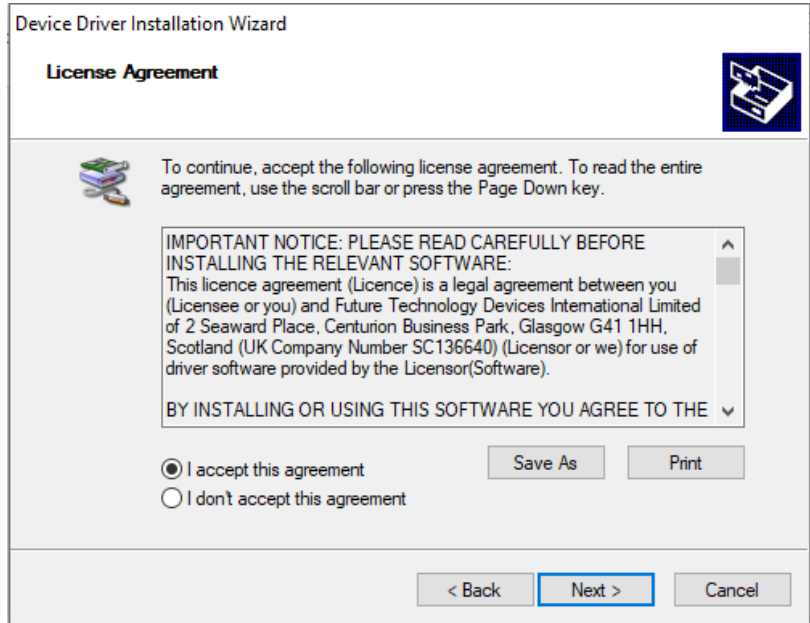
2. Select **Extract**.



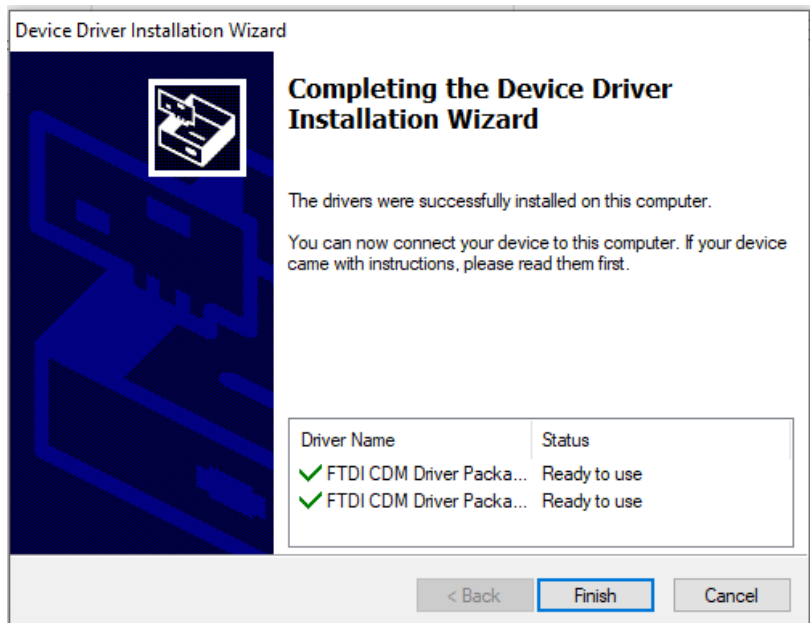
3. Select **Next**.



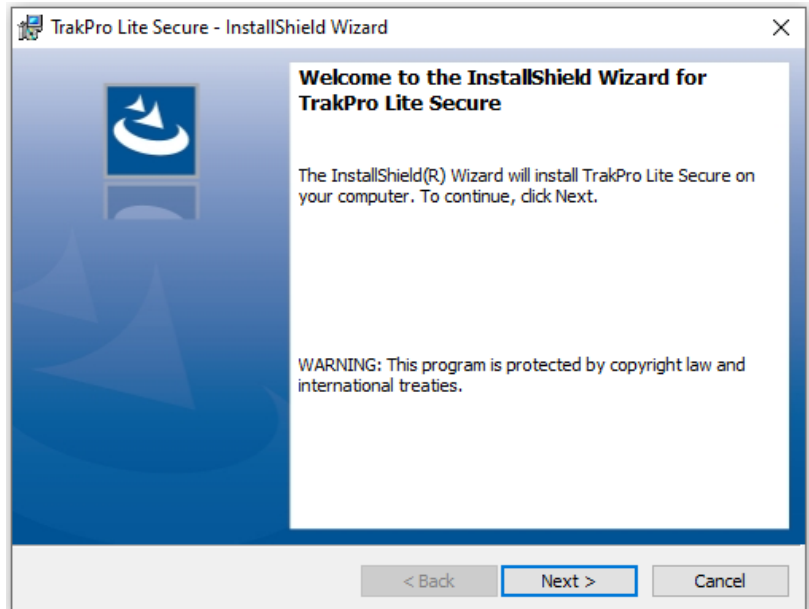
4. Accept the agreement and select **Next**.



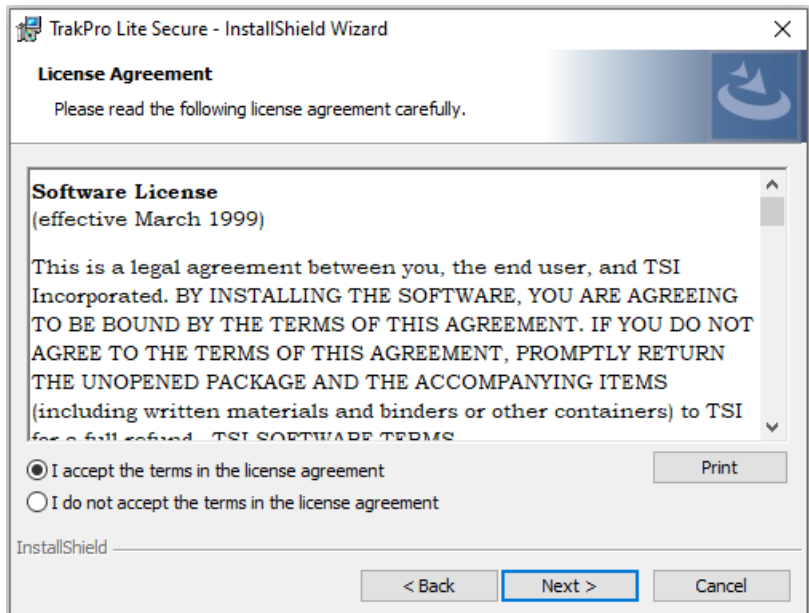
5. Select **Finish**.



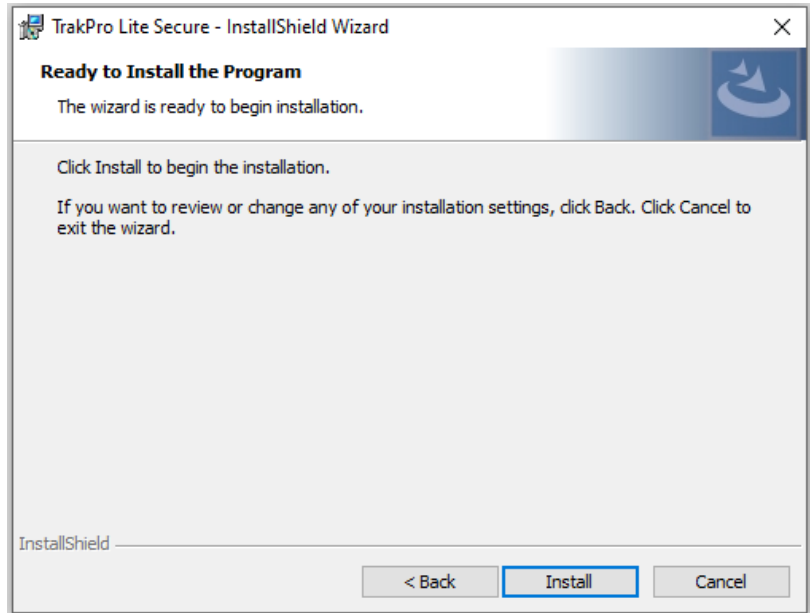
6. Select **Next**.



7. Accept the terms of the license and select **Next**.

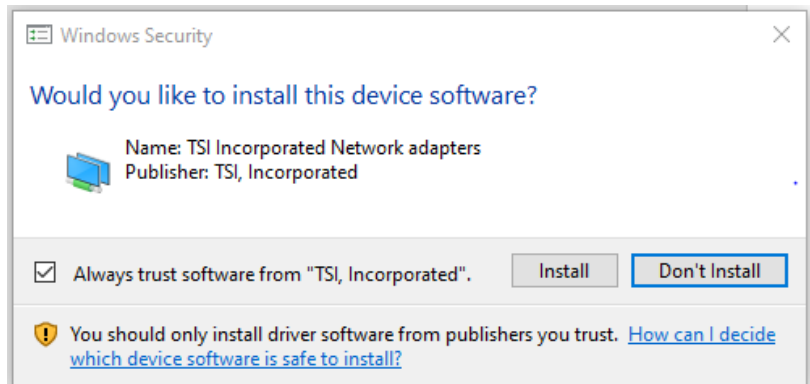


8. Select **Install**.

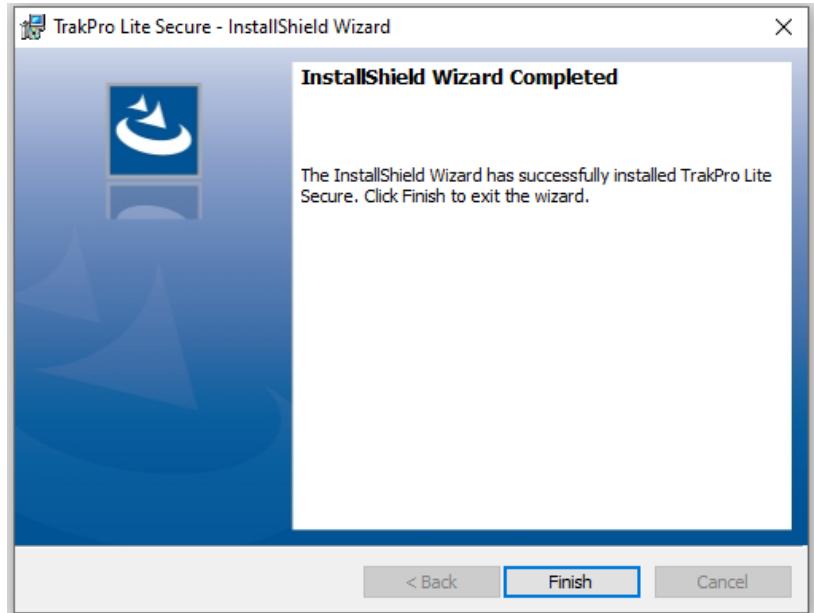


9. Now installing TSIUSB drivers followed by the TrakPro™ Lite Secure software.

10. Select **Install**.



11. Select **Finish**.



If there is an older version of TrakPro™ Lite (non-secure) software on the computer, the installer will leave it on the system; both versions can be run but not at the same time. Running TrakPro™ Lite software and TrakPro™ Lite Secure software simultaneously causes unpredictable behavior during communications with the attached devices. TrakPro Lite (non-secure) software cannot be used with BioTrak® Real-Time Viable Particle Counters. If there is an older version of TrakPro Lite Secure software, it will be overwritten.

Use the cable supplied by TSI® Incorporated to attach the computer to the AeroTrak® Airborne Particle Counter or BioTrak® Real-Time Viable Particle Counter.

To connect the computer and the instrument, follow these instructions:

1. Power on the instrument and wait for the main screen to appear.
2. Connect one end of the supplied cable to an open USB port on your computer.
3. Connect the other end of the cable to the USB port on the instrument.

(This page intentionally left blank)

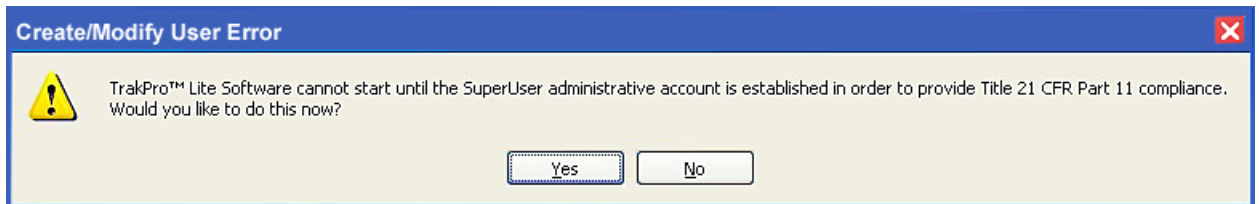
CHAPTER 2

Setting Up and Using TrakPro™ Lite Secure Software

Start TrakPro™ Lite Secure software either by clicking on its icon on the desktop or by selecting it through the Start menu. A shortcut to the application is located at **Start | All Programs | TSI | TrakPro Lite Secure**.

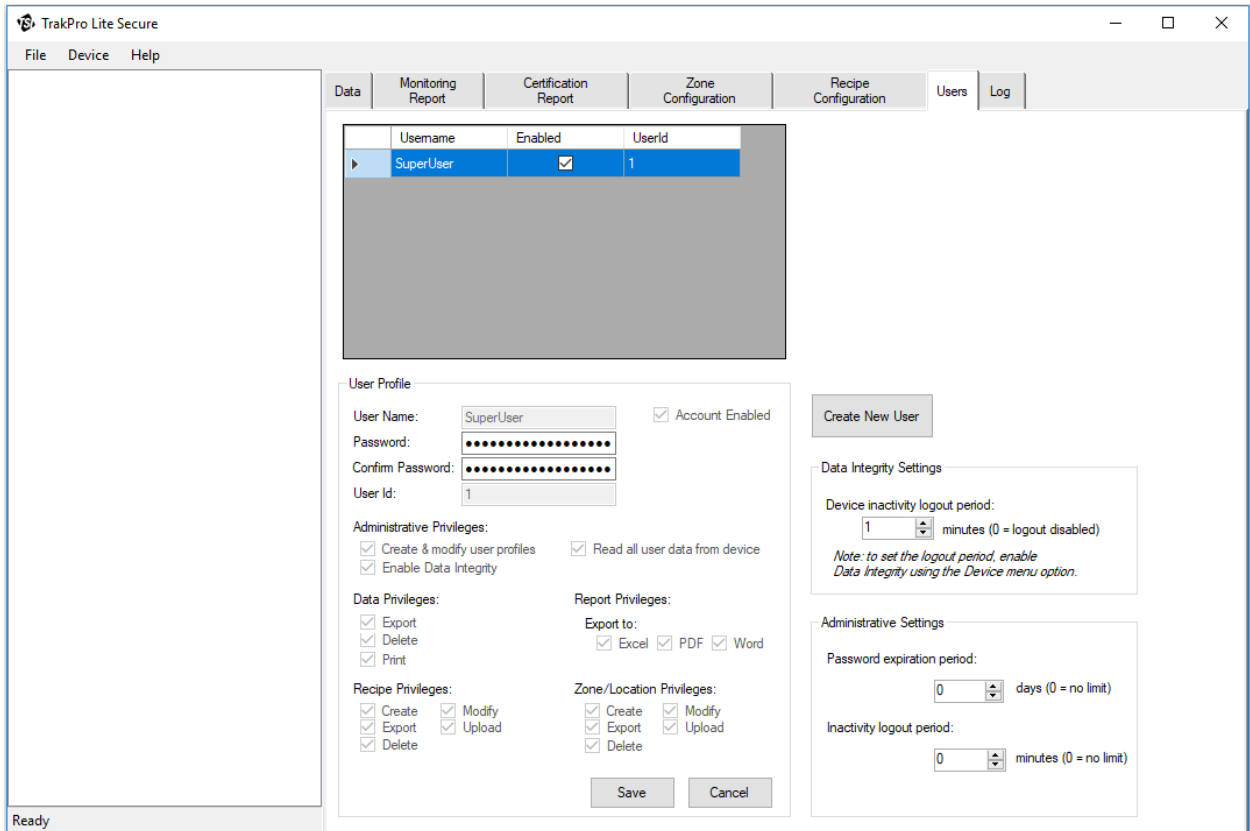
First Time Startup

The first time the software is started, the following message displays:



The application will not allow you to proceed until the “SuperUser” account has been defined. The SuperUser has all the privileges allowed and must be setup in order to proceed. The “SuperUser” account may not be deleted and also controls the creation of all other users.

1. Click **Yes** to display **User Management** screen (User tab) to enter a password for “SuperUser.”



2. Select and enter a password for the SuperUser in the New Password box and confirm it in the **Confirm Password** box.
3. Click **Save** to store the changes.

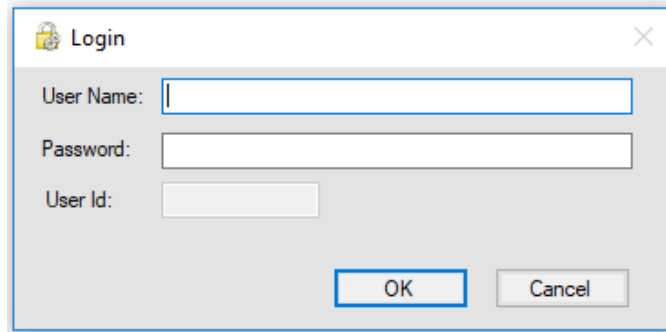
NOTE

All the checkboxes are already selected. These boxes may **NOT** be unselected for the SuperUser. The Data Integrity and Administrative Settings may be changed and applies to all users of the software.

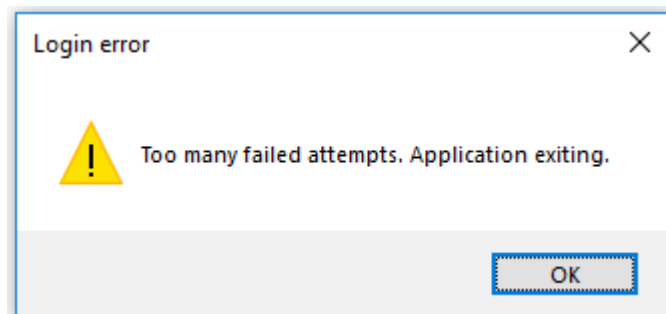
TrakPro™ Lite Secure software is now ready for operation. Since this is the default built-in user, TSI® strongly recommends storing the password in a safe place and creating another user with the same privileges for everyday use.

Running TrakPro™ Lite Secure Software

1. After the SuperUser password has been created, the following prompt is displayed when the application is started.



2. To use the application, a valid user name and password must be entered. If a valid user name and password is not entered (you have three tries), the following error message displays and you will not be allowed to log in until a user with administrative privileges re-enables your user name.



3. Once successfully logged in, TrakPro Lite™ Secure software displays only the menu items and tab pages for which you have the appropriate privilege. Other options are disabled.

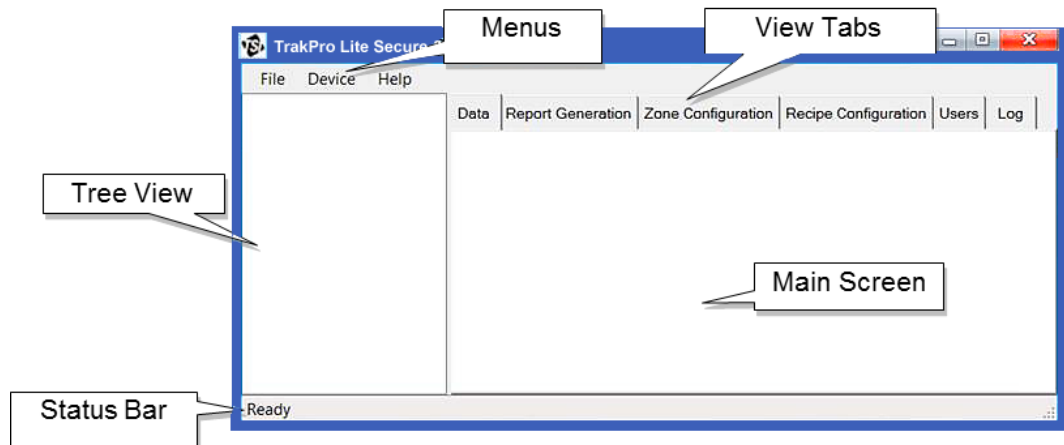
Before using TrakPro™ Lite Secure software, please thoroughly read the manuals for each of the devices with which this application will be used. Those manuals define and clarify many of the terms and concepts needed in order to use this application effectively.

WARNINGS

- **DO NOT** connect the USB cable from instrument to computer until the instrument is fully initialized and at its Main screen.
- **DO NOT** run two instances of TrakPro™ Lite Secure software connecting to the same instrument at the same time.

Connect the instrument to the computer. If the model is 9303, the software will automatically find the instrument. If the device is another model, use the “Connect” option in the Device menu to connect the software to the instrument. If the instrument is connected by a USB cable, the USB IP Address will be displayed and you can select it. If the device is on an Ethernet network, the IP address must be entered (see Chapter 2, [Device Menu](#)).

Main Screen Layout




The main screen layout includes:

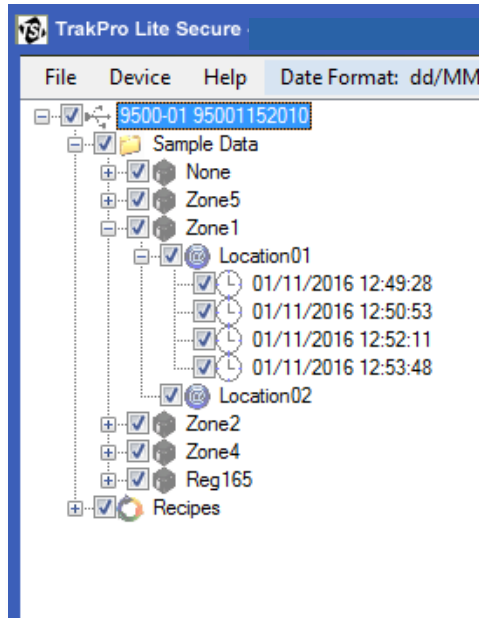
- A Tree View that lists the devices that are connected to the application and the currently open data files.
- Menu used to perform operations such as loading and saving file data etc.
- View tabs allow selecting the type of information needed to view or work with.
- Main screen, which is where information is displayed.
- A status bar which keeps you informed while operations are performed, such as files loading, etc.

These are all described in the following pages.

Tree View

The Tree View displays the instrument files that are opened in the application (using **File | Open Data File**) or the samples and configuration data for the instrument you are connected to. Click on the  icon next to the tree view item to expand the information from that file to include the sample data, zones, locations, and recipes.

The information displayed in the main screen reflects the options that have been checked in the Tree View. Checking an object in the tree automatically checks the parent file above it. This determines the currently selected file or instrument (top object in the tree). All menu options and display capabilities are based on the currently selected instrument or file.



The Tree View layout varies according to the instrument.

For instruments which support Zones, the following items are available under each top-level instrument node in the tree:


- Sample Data
 - Zone Name
 - Locations
 - Sample Records
- Recipes

For instruments which do not support Zones, the following items are available in the tree view:

- Sample Data
 - Records
 - Locations
 - Sample Records
- Recipes



The following icons help to identify the items:

Zones 

Locations 

Recipes 

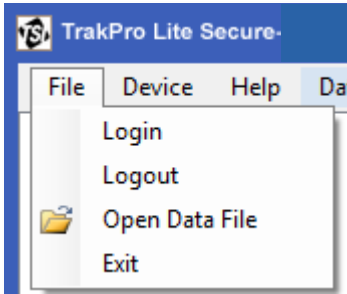
Sample Data 

Sample Records  (not selected) or  (selected)

Menu Items

There are three menus for navigating through the application: **File** menu, **Device** menu, and **Help** menu. Each is described below.

File Menu

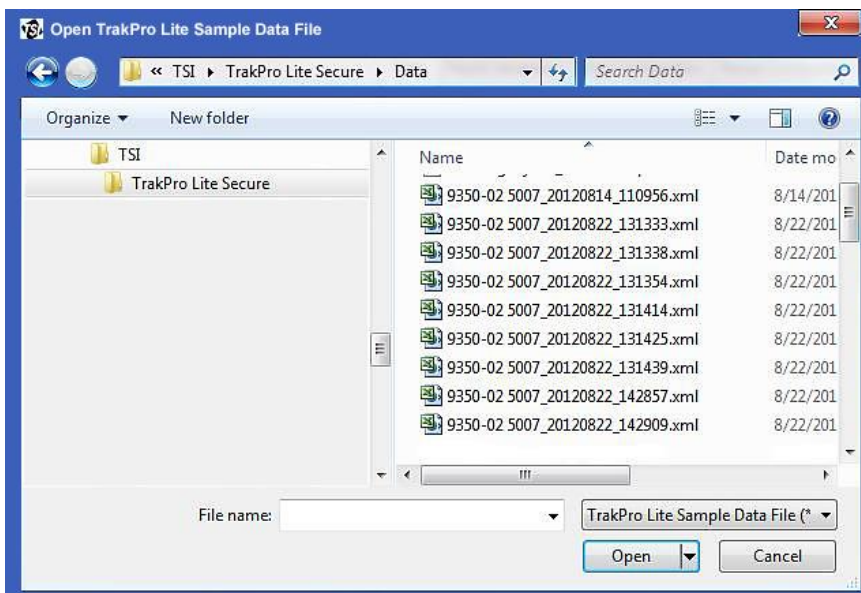


The **File** menu provides options to login, logout, open data files, and exit the application as described in the following table.

Option	Description
Login	Switch to a different user if a user is already logged in.
Logout	Logs out the current user and redisplay the Login message.
Open Data File	Used to open an instrument data file in the application (described below).
Exit	Closes and exits the application. If there are any changes that have not been saved, a prompt appears asking to update devices with the changes.

To Open a Data File

Select **File|Open Data File**. A standard Windows® dialog opens to choose which file to open. If needed, navigate to a new location to find the data file to open. Once the file is selected, click **Open**.



The data file may be one of the following types:

File Type	Usage
*.tplv2	Legacy TrakPro™ Lite Secure data file.
*.xml	Data file
*_sec.xml	Secured data file

A *.tplv2 file is one that was saved by a previous version of TrakPro™ Lite Secure software. This file type is supported for compatibility only; TrakPro™ Lite Secure software no longer saves files in this format.

A *_sec.xml is a secured data file and contains sample data exported by an instrument and saved to USB storage. This file is write-protected and its contents are automatically verified by TrakPro Lite Secure software. Modifications or tampering of data in the file will invalidate it.

A *.xml file contains sample data in the same format as the *_sec.xml file. The data in this file may have been originally exported by the instrument (i.e., an unsecured copy of the *_sec.xml file) or it may have been saved by TrakPro Lite Secure software. (Refer to [Saving Sample Records](#) in the next section under the [Device Menu](#) options.)

NOTE

When TrakPro™ Lite Secure software opens any *_sec.xml or *.xml data file, it automatically verifies that the contents of this file have not been modified. If it detects that the file has been modified from its original content, it displays a message indicating that it is unable to verify the file.

Once the file is successfully opened, the instrument configuration and sample records are added to the tree view and the summary data for that file is presented in the main display (Data Tab). The status bar at the bottom of the main display shows progress as the file is loaded. Large files may take some time to load; wait until the status bar reads “Ready.”

The screenshot shows the TrakPro Lite Secure software interface. The left pane displays a tree view of the data structure, including Sample Data, Location01, and sv. The main display shows the Data tab with the following information:

Model: 9306-V2 **Serial:** 93061612004

Count Mode: Σ **Units:** # / m³ **Temperature:** °C

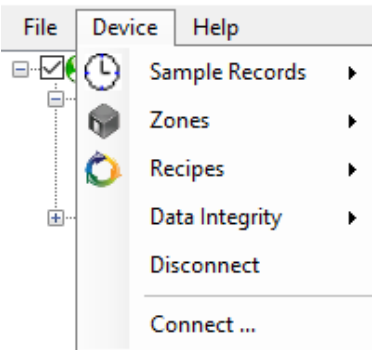
Number of Samples: 4

Channel	Min	Max	Average	Std. Dev.	Std. Error
1	1464664	1532862	1509364	31039.96	15519.98
2	256184	293286	278180.25	15874.4	7937.2
3	102120	117668	109894	7848.69	3924.34
4	42403	51943	46819.75	4620.5	2310.25
5	17668	28269	23940	4528.69	2264.34
6	4947	8127	6537	1644.84	822.42

#	Zone	Location	Date & Time	Device Status	Sample Time	Ch1 (µm)	Σ	Ch2 (µm)	Σ	Ch3 (µm)	Σ	Ch4 (µm)	Σ	Ch5 (µm)	Σ	Ch6 (µm)	Σ	Flow Status	Laser Status	Vol. (L)	Temp	Humidity (%)
1	flowrate	Location01	21/10/2019 14:36:13	OK	00:01:00	0.3	1532862	0.5	256184	1	102120	3	43463	5	24028	10	4947	OK	OK	2.83	N/A	N/A
2	flowrate	Location01	21/10/2019 14:37:13	OK	00:01:00	0.3	1512368	0.5	284806	1	115548	3	49470	5	25795	10	7774	OK	OK	2.83	N/A	N/A
3	flowrate	Location01	21/10/2019 14:38:13	OK	00:01:00	0.3	1527562	0.5	278445	1	117668	3	51943	5	28269	10	8127	OK	OK	2.83	N/A	N/A
4	flowrate	Location01	21/10/2019 14:39:13	OK	00:00:12	0.3	1464664	0.5	293286	1	104240	3	42403	5	17668	10	5300	OK	OK	0.57	N/A	N/A

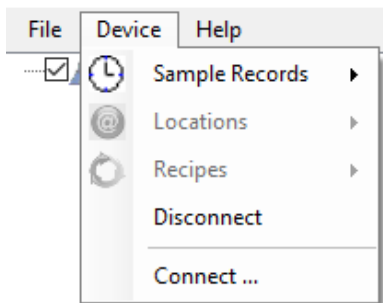
Device Menu

TrakPro Lite Secure



Particle Counter with Zones

TrakPro Lite Secure



Particle Counter without Zones

The Device menu provides operations related to sample records, zones, locations, and recipes. It also allows connecting to devices connected through an Ethernet or USB port.

As shown above, the menu differs on whether or not TrakPro™ Lite Secure software is communicating with a Particle Counter which supports Zones.

Option	Description
Sample Records	Delete or save sample records.
Zones	Save, load, upload, or delete zones. When a zone configuration is saved to a file, the zone, its locations and its associated recipe configuration is saved.
Locations	Save, load, upload, create or delete locations (particle counter with no zone support only).
Recipes	Save, load, upload, and delete recipes.
Data Integrity	Place unit into data integrity mode and/or log into unit that is in data integrity mode.
Disconnect	Disconnect from a device on Ethernet or USB.
Connect	Connect to a device on Ethernet or USB.

Saving Sample Records

Use the Device Menu option **Sample Records | Save Selected Samples to File** to save your sample data. The saved file will be an Excel®-XML formatted file (*.xml) and will contain all of the selected (checked) samples from the tree view, as well as the zones, locations and recipes configured.

NOTE

TrakPro™ Lite Secure software always saves this file with read-only permissions. This file can only be re-opened by TrakPro™ Lite Secure software if it has not been modified from its original content.

Saving Zones and Recipes

Zones and Recipes may be saved to Excel®-XML formatted configuration files and later read in by TrakPro Lite Secure software. Use the Device Menu option **Zones | Save Selected to File**. A zone configuration file contains the settings, recipe and locations for a *single* zone. Multiple zones may be selected to save at one time; however, each zone configuration is saved to its own file.

To save only recipe configurations, place a check next to the recipes you want to save and TrakPro Lite Secure software saves them to a single Excel®-XML formatted file.

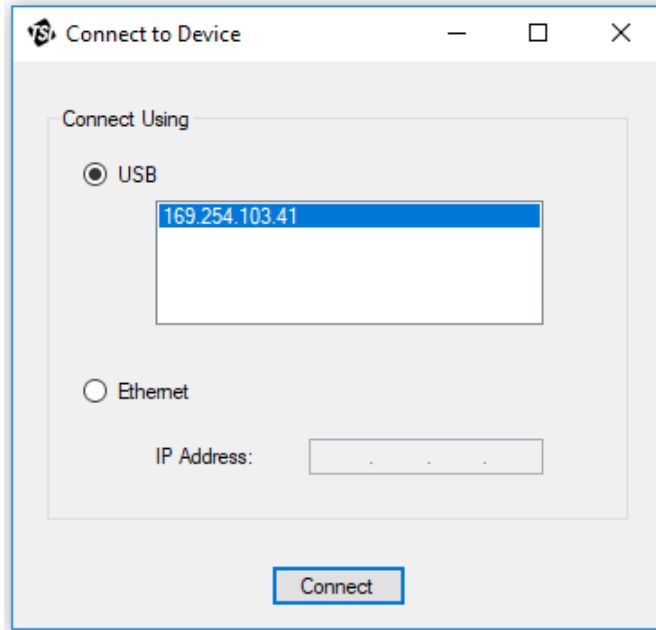
Data Integrity

Use the Device menu option **Data Integrity** to adjust the operation for data integrity. If you have permission to enable data integrity, the option to enable or disable will be available. All users will have the ability to log in or out of an instrument with data integrity enabled through this menu. Logging in will unlock the instrument and logging out will lock it.

Connect

To connect to an instrument on USB or Ethernet:

Select **Device|Connect**. The following dialog appears.

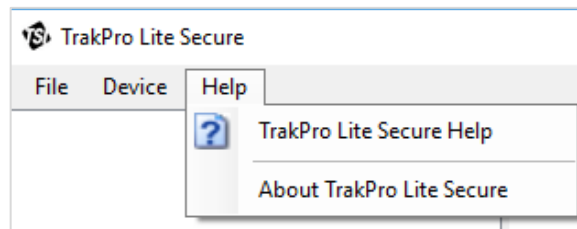


Select the radio button for USB or Ethernet. If a device is found connected using USB, its address will display. Select the USB address and press **Connect**. To connect using Ethernet, select the radio button for Ethernet and enter the IP address of the device and then press **Connect**. The application will connect to the device and appear in the tree view.

NOTE

The above dialog is **not** used with the Model 9303 AeroTrak[®] Particle Counter. If you connect a Model 9303, the software will automatically find it (it might take a few seconds).

Menu



The Help menu allows displaying this document as a PDF file or viewing information about the software (such as the version, etc.). When calling for support, this information will need to be accessed.

Data Tab

The Data tab displays the file data selected in the tree view and includes information such as the model number of the instrument, number of samples, statistics of the sample, and so on.

The following table describes each field on the screen.

Option	Description
Model	The model number of the instrument.
Serial	The serial number of the instrument.
Algorithm Version	The software version (<i>for BioTrak[®] counter only</i>).
Count Mode	Whether the data is presented in differential or cumulative count mode. Change this using the Report Viewer Toolbar.
Units	Whether the data is presented in counts (#) or concentration. (#/L, #/ft ³ , #/m ³). Change this using the Report Viewer Toolbar.
Temperature	Specifies which temperature readings are displayed in units of °F or °C. This is only applicable to devices with an external temperature probe capability when the probe is installed.
Number of Samples	The number of samples included in the statistics and in the table display.
Channel	Identifies the channel for the statistical data.
Min*	Displays the minimum value for the statistical data.
Max*	Displays the maximum value for the statistical data.
Average*	Displays the average value for the statistical data.
Std. Dev.*	Displays the standard deviation value for the statistical data.
Std Error*	Displays the standard error value for the statistical data.
#	Identifies the sample number.
Zone	The zone in which this sample was recorded.

Option	Description
Location	The name of the location in which this sample was recorded.
Date & Time	Sample date and time dd/MM/yyyy and hh:mm:ss am or pm.
Device Status	The status of the device: "OK" or "Error." The cell has a red background if there is an error.
Sample Time	The length of the sample period in hh:mm:ss.
Sensitivity	High, normal, disabled. <i>BioTrak® counter only.</i>
Cumulative Σ or Differential Δ	The column heading displays the count mode in the column to provide an indication of the values in the channel columns (Ch1 to Ch6). <i>AeroTrak particle counters with variable bin sizes only</i>
Ch1 to Ch 6 (size μm) (VCNT)	The total values for the channel. The "(VNCT)" will appear for BioTrak® counters only and refers to the viable counts which are displayed under each total count value in parenthesis in the column.
Flow Status	Can read either "OK" or "Error." The cell has a red background if there is an error.
Laser Status	Can read either "OK" or "Error." The cell has a red background if there is an error.
Volume	The sample volume in liters
Temp	The sample temperature reading, if supported by a temperature probe. Otherwise, N/A for "not available."
Humidity	The humidity value in percent RH or "N/A" if not supported by the device.
Velocity	Velocity of the air flow at the time the sample was taken or "N/A" if not supported by the device.

*For a BioTrak® Real-Time Viable Particle Counter, the statistics values for the viable channels are displayed in parenthesis.

NOTE
When displaying the data records on an instrument which supports variable channel sizes, the statistics table displays the channel number in the first column rather than the channel size. The calculated statistics should only be interpreted if all channels included (checked) are using the same channel sizes.

Right-clicking on the screen provides options for refreshing, printing, exporting, and zooming in on information that is displayed.

To set preferences as to how the data is displayed on the screen, use the Report Viewer Toolbar. These settings can be changed at any point when the software is operating, and the displayed reports automatically refresh calculated values to reflect new changes.



This toolbar can also be used to:

1. Refresh the data
2. Send the data to a printer
3. Set up print layout
4. Export the data to an Excel® spreadsheet or a PDF file.
5. Filter data using start and end dates. Click the **Filter** button on the toolbar to display the “Filter Samples” form shown below. Check the **Use Start Date** checkbox and select a Start Date from the associated calendar control to filter out samples collected before that start date. Check the **Use End Date** checkbox and select an End Date from the associated calendar control to filter out samples collected after that end date.

Filter Samples

Date Format: dd/MM/yyyy

Use Start Date (include only samples with same or later date than Start Date).

Select Start Date: 01/11/2016

Use End Date (include only samples with same or earlier date than End Date).

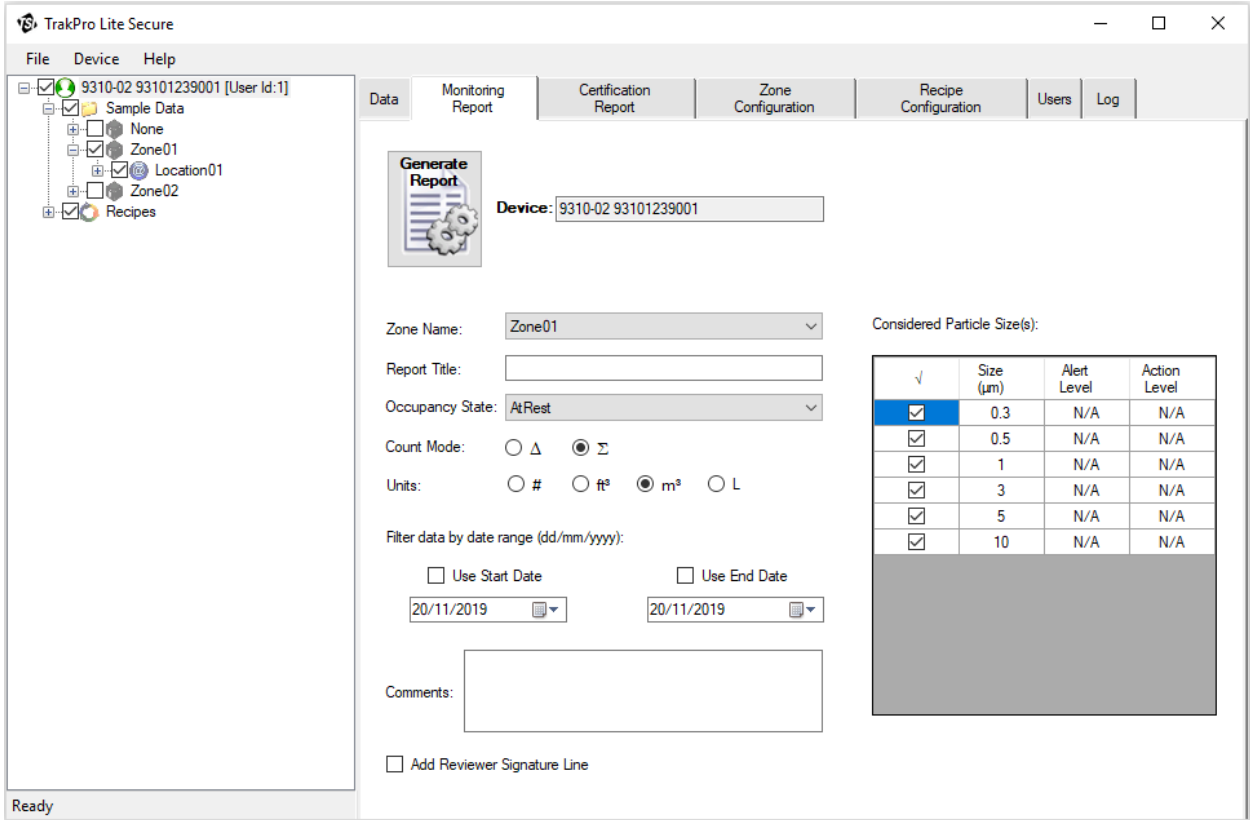
Select End Date: 15/11/2016

Cancel OK

6. To view the operation of each icon on the toolbar, roll over the icon using the pointer on the screen.


Monitoring Report Tab

Generate a Monitoring Report for a specific zone from this screen. Select the device in the tree view to generate the report. Use the information in the table below to setup the report.



The fields and options for this screen are described in the following table.

Option	Description
Device	The model and serial number of the device (read-only).
Zone Name	If the instrument supports zones, select a zone from the drop-down list. When a zone is selected, the samples that will be included in the report are shown in the tree view. If the instrument does not support zones, type a zone name. The report will include the records for the zone name.
Report Title	Enter a title for the report.
Occupancy State	Select the testing state of the clean space: Operational, As Built, or At Rest. Refer to the instrument manual for more information.
Count Mode	Displays the counts in Differential <input type="radio"/> Δ or Cumulative <input type="radio"/> Σ

Option	Description
Units	The units the data will be displayed in: counts <input type="radio"/> #, cubic feet <input type="radio"/> ft ³ , cubic meters <input checked="" type="radio"/> m ³ , or liters <input type="radio"/> L
Use Start Date	Check this box and select a date to exclude from report samples collected before that date.
Use End Date	Check this box and select a date to exclude from report samples collected after that date.
Comments	This is an open field that allows adding comments in the report.
Add Reviewer Signature Line	Adds a place holder for a signature and date at the bottom of the report.
Considered Particle Size(s)	This table displays the channel sizes measured by the selected Device. Check the box(es) of the desired size(s) to be included on the report. Enter Alert and Action Levels to have the sample results evaluated against those levels in the report.
Generate Report button	 Press this button to generate the report. All selected samples for the zone are included in the report.

Particle Monitoring Report

1 of 2 ?

100%

Find | Next

Particle Monitoring Report

3433

Sampling Information		Particle Counter Used	
Zone Name	3433	Model	9306-V2
OccupancyState	AtRest	Serial #	93061612004
Sampled By	SuperUser	Last Calibration Date	16/07/2018

Particle Counter Settings		Comments
Start Delay	00:00:05	This report is complete and valid
Sample Time	00:00:30	
Hold Time	00:00:00	
Cycles	1	

Results Summary

Size	Alert	Action	Min	Max	Mean	Locations in Alert	Locations in Action
0.3	0	0	1992226	2077032	2048057	Location01	Location01
0.5	0	0	383039	438163	414606	Location01	Location01
1.0	0	0	151237	192933	171732	Location01	Location01
3.0	0	0	49470	69965	61249	Location01	Location01
5.0	0	0	25442	43816	34865	Location01	Location01
10.0	0	0	7774	11307	9423	Location01	Location01

Results Table (Cumulative, #/m³)

Location	Date Time (dd/mm/yy)	Sample Time (s)	Volume (L)	Size (µm)	Conc #/m ³	Device Status	Flow Status	Laser Status
Location01	22/10/2019 08:41:52	00:00:30	1.4	0.3	2077032	OK	OK	OK
				0.5	438163			
				1.0	192933			
				3.0	69965			
				5.0	43816			
				10.0	9187			
Location01	22/10/2019 08:43:13	00:00:30	1.4	0.3	1992226	OK	OK	OK

End of Report File with signature line

Reviewed By: _____ Date: _____

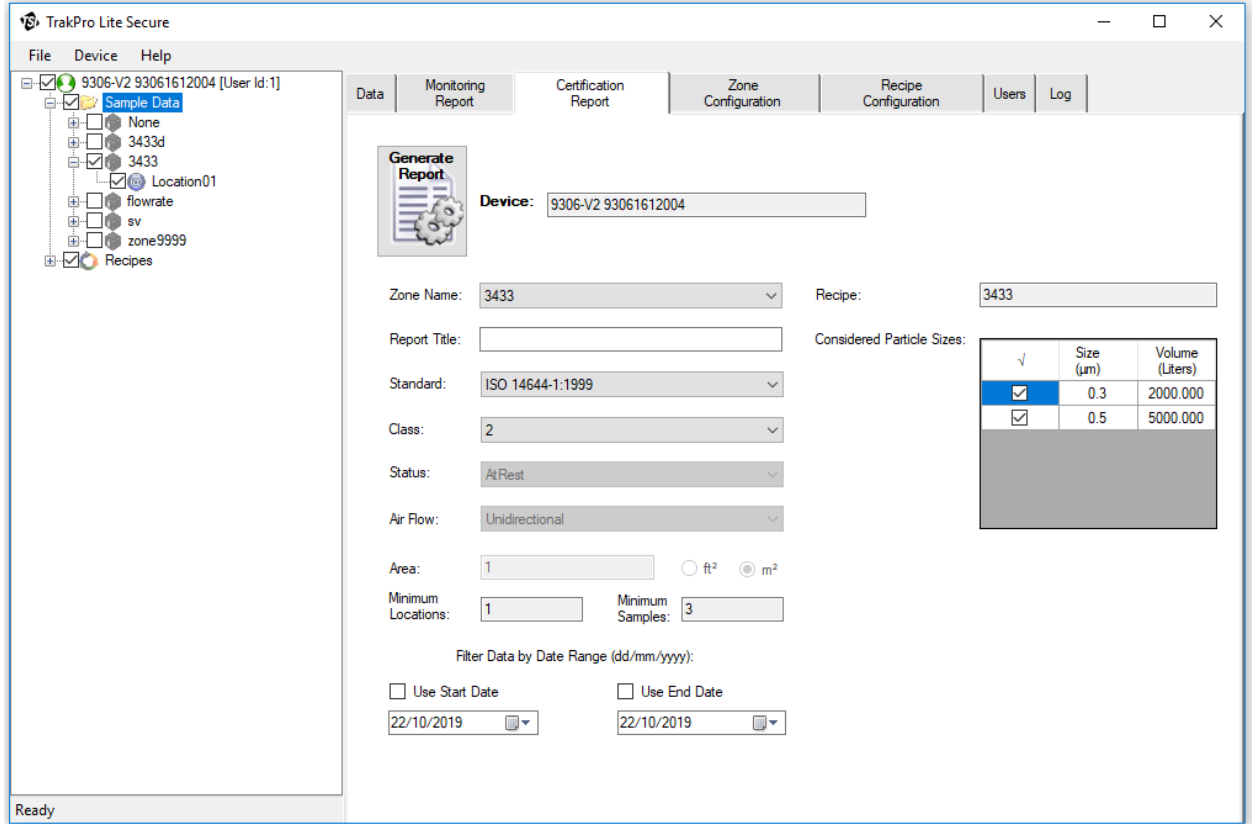
Report Created By: SuperUser

Date/Time: 11/20/2019 12:44:39 PM

page 2 of 2

Certification Report Tab


Generate a certification standard report for a specific zone from this menu. Select the device from the tree view to generate the report. Use the information in the table below to setup the report.



To exclude a sample from the report, “uncheck” that sample in the tree view. The generated report will separately report the excluded sample in the final report.

The fields and options for this screen are described in the following table.

Option	Description
Device	The model and serial number of the device (read-only).
Zone Name	If the instrument supports zones, select a zone from the drop-down list. When a zone is selected, the samples that will be included in the report are shown in the tree view. If the instrument does not support zones, type a zone name. The report will include the records for the zone name.
Report Title	Enter a title for the report.
Standard	Use the drop-down list to select the Standard for the selected zone. Even though the zone is configured for a particular Standard, a different Standard for the report can be selected.

Option	Description
Class	Use the drop-down list to select the Standard class. A different class can be selected than what is defined for the zone.
Status	Select the testing state of the clean space: Operational, As Built, or At Rest. If the instrument supports zones, the display is read-only and shows the value configured for the zone selected. Refer to the instrument manual for more information.
Air Flow	Use the drop-down list to select the zone's air flow, either Unidirectional or Multidirectional. If the instrument supports zones, the display is read-only and shows the value configured for the zone.
Area	Enter the area and units for the selected zone. If the instrument supports zones, the display is read-only and shows the value configured for the zone.
Recipe	Select the recipe for the selected zone from the drop-down list of available recipes. If the instrument supports zones, the display is read-only and shows the recipe configured for the zone.
Minimum Locations	The minimum number of locations based on the selected zone and Standard. This value is automatically calculated using the air flow and area for the selected Standard. The value is read-only.
Minimum Samples	The minimum number of samples for the selected zone and Standard. This value is automatically calculated using the number of locations, air flow and area. The value is read-only.
Use Start Date	Check this box and select a date to exclude samples collected before that date.
Use End Date	Check this box and select a date to exclude samples collected after that date.
Channel Sizes	This table displays the channel sizes required by the selected Standard. The selected channels are those enabled by the recipe for those samples. To include or exclude a channel size, check or uncheck the appropriate box.
Generate Report button	 <p>Press this button to generate the report. All selected samples for the zone are included in the report. If the Standard allows samples to be excluded then excluded samples are listed in a separate section of the report ("Excluded Samples"). If sample exclusion is not allowed or the allowed numbers exceed industry-defined limits, a message is displayed to the user and the report is not generated. See the report format below.</p>

Standard Report

1 of 2 100% Find | Next

Cleanroom Certificate Report

ISO 14644-1 : 1999

Report:	Building 3A	Date Data Taken	11/6/2012 - 11/6/2012
Certificate Result:	Pass	Time Data Taken	10:36 AM - 10:40 AM

Cleanroom Information		Particle Counter Used	
Zone Name	Zone3	Instrument	9510-BD-P
Recipe Name	Recipe03	Serial #	9510BD006
Target Class	9	Last Calibration Date	11/1/2012
Area	9.0 m ²		
OccupancyState	AtRest		
Air Flow Direction	Unidirectional		

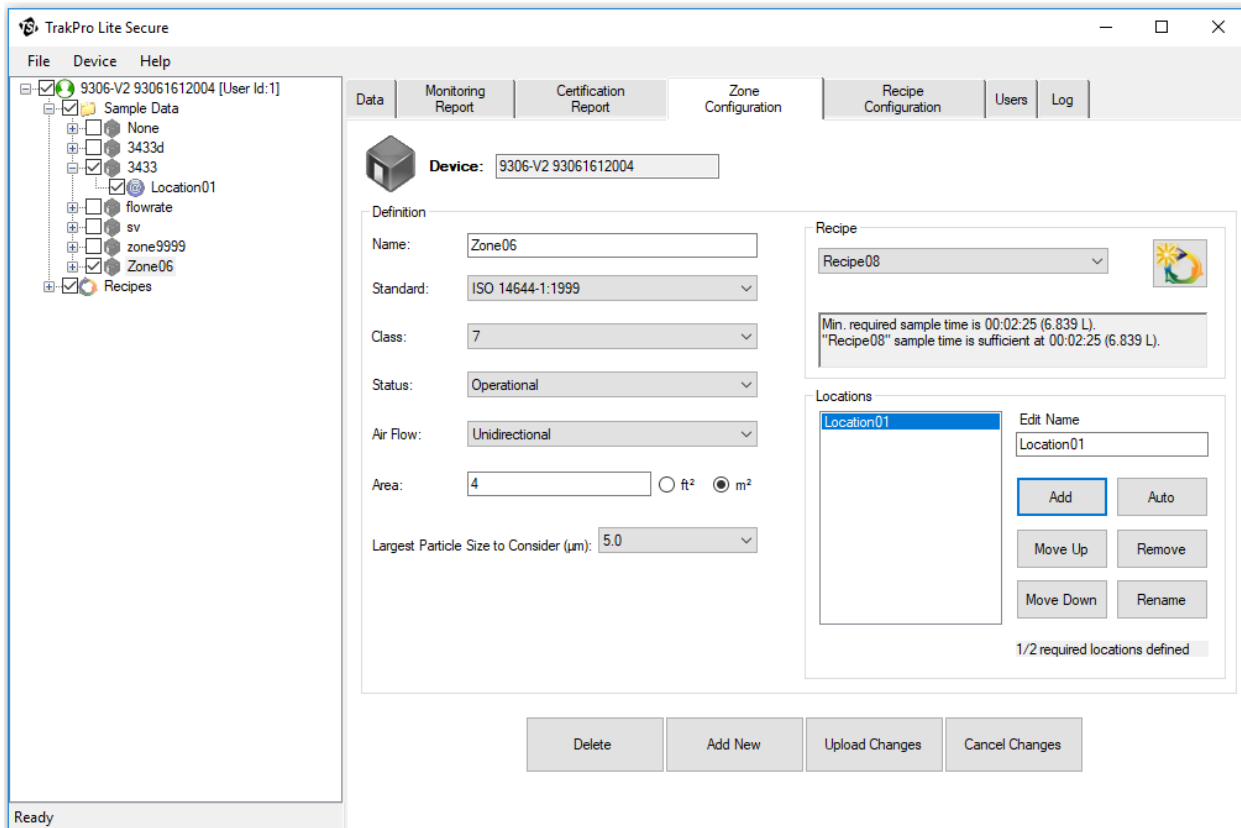
	Minimum	Actual
Locations/Zone	3	3
Samples/Location	1	1
Total Samples	3	3
Sample Volume	2 L	28.3 L
Sample Time	00:01:00	00:01:00


Particle Data	Size	Max	Mean	Std Dev	95% UCL	Conc Limit
Cumulative, P/m ³	0.5	854240	821013	29489	870387	3520000
Cumulative, P/m ³	1.0	164841	157256	9546	173239	8320000
Cumulative, P/m ³	5.0	19929	18080	1911	21280	293000

Location Averages	Location	# of Samples	Size (µm)	Conc (#/m ³)
-------------------	----------	--------------	-----------	--------------------------

Zone Configuration Tab

This tab displays the configuration of a zone and allows deleting a zone, creating a zone, and uploading changes to a zone. Only instruments that support Zones may use this function.





The controls on this page are disabled if this data was opened from an XML file; no changes are allowed to existing data files. In addition, a zone that contains sample records is “locked”  and cannot be deleted. If there are no sample records for the zone, the fields are enabled and changes can be made to the configuration parameters.

Refer to the particle counter user’s manual for more detailed information.


If running the instrument in “Manual Operation” where there are no specific zones, the instrument defines a default zone “None”, includes locations marked as “unknown”, and uses the recipe “Default”. This zone configuration cannot be modified.

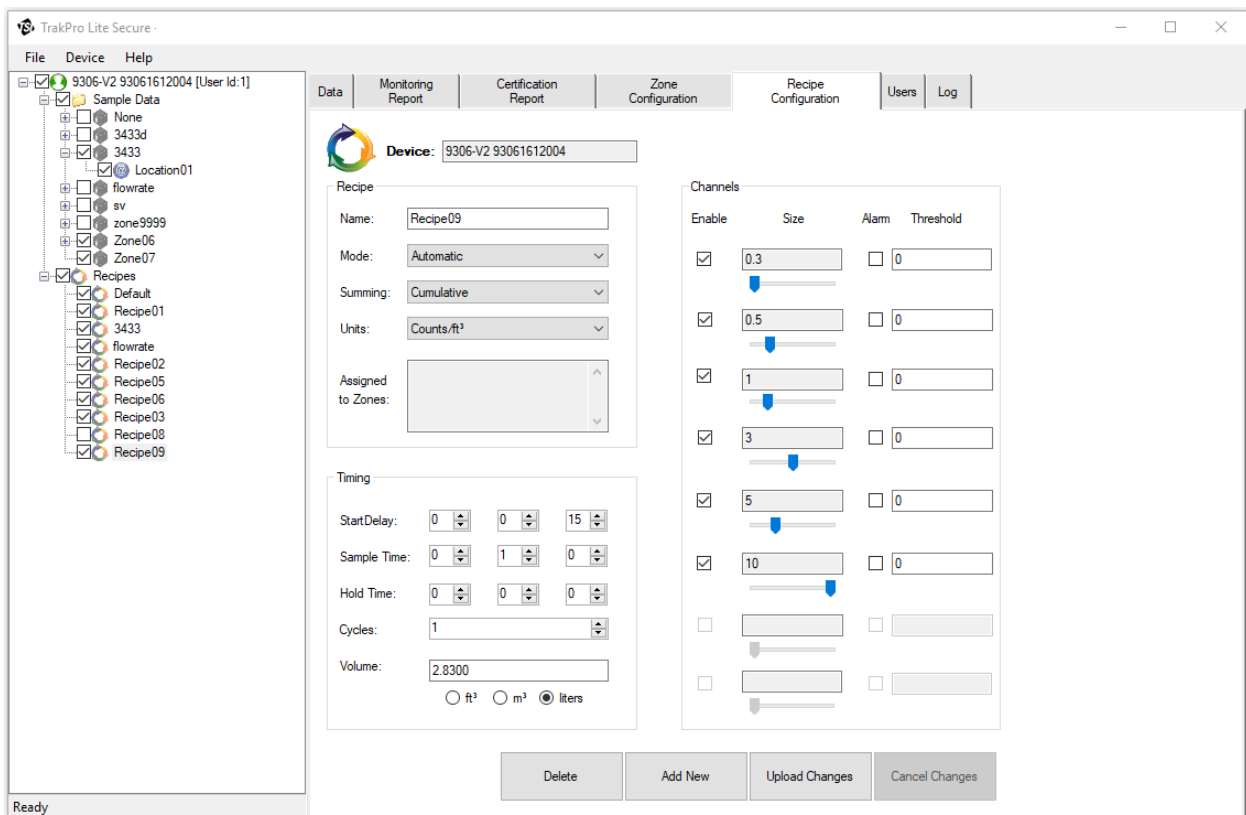
Option	Description
Device	The model number and serial number of the device (read-only)
Name	Name of the zone.
Standard	The Standard selected for this zone. Available standards include: ISO-14644-1:1999, US Federal Standard 209E (ft ³ and m ³), EUGMP Annex 1 2008, or none (Manual Operation).
Class	The class selected for the zone. Value depends on the Standard.

Option	Description
Status	If not locked, the sampling status selected for the zone. Options include: "As Built," "At Rest," or "Operational." Value depends on the Standard.
Air Flow	The direction of air flow through the zone. Options include: Unidirectional or Multidirectional. Value depends on the Standard.
Area	The area of the zone in ft ³ or m ³ .
Largest Particle Size to Consider	The largest particle size to consider for this zone.
Recipe	The recipe assigned to the zone. If this recipe is assigned to other zones, the message "This recipe is assigned to multiple zones." is displayed below it.
Create New Recipe Button 	Select this button to create a new recipe for the zone. This new recipe will automatically be configured to support the zone configuration parameters.
Locations	A list of locations configured for the zone. Use the buttons to rename, add, or remove locations from the list. The application displays a message below these buttons indicating whether or not the required number of locations for the selected Standard have been defined.
Edit Name	Modify the name of a location by highlighting the location name and then typing in this field. Click Rename when done. Location names within a zone must be unique. A lock icon  displays if the location contains sample data; in this case, deletions or changes may not be made to this location.
Add	Click Add to add a new location. The name "Location xx" is displayed (where xx is a number beginning with 01). The location can be renamed as desired.
Auto	Click Auto to automatically create a list of location names sufficient for the selected standard. Names are displayed as "Location xx (where xx is a number beginning with 01). The location can be renamed as desired.
Move Up	Moves the selected location name up in the list.
Remove	Removes (deletes) the selected location.
Move Down	Moves the selected location name down in the list.
Rename	After editing the selected location name, click Rename to update the location name.
Delete	Deletes the currently selected zone from the instrument.
Add New	Initializes the page using the values of the currently selected zone in tree view and puts the cursor in the "Name" field. A default name of "Zone" plus the current date and time is inserted. Zone names must be unique on the instrument. When done, you must upload the zone to the device by selecting Upload Changes .
Upload Changes	The selected zone configuration is uploaded to the device.

Option	Description
Cancel Changes	Use this button to cancel and reverse any changes made for the selected zone. The initial configuration values for the zone are restored.

Recipe Configuration Tab

This tab displays the Recipe configuration for the recipe selected in the Tree View and allows deleting and creating recipes and uploading changes to recipes. A recipe that is in use for an existing sample record cannot be deleted and a lock icon  will display in the upper right corner.



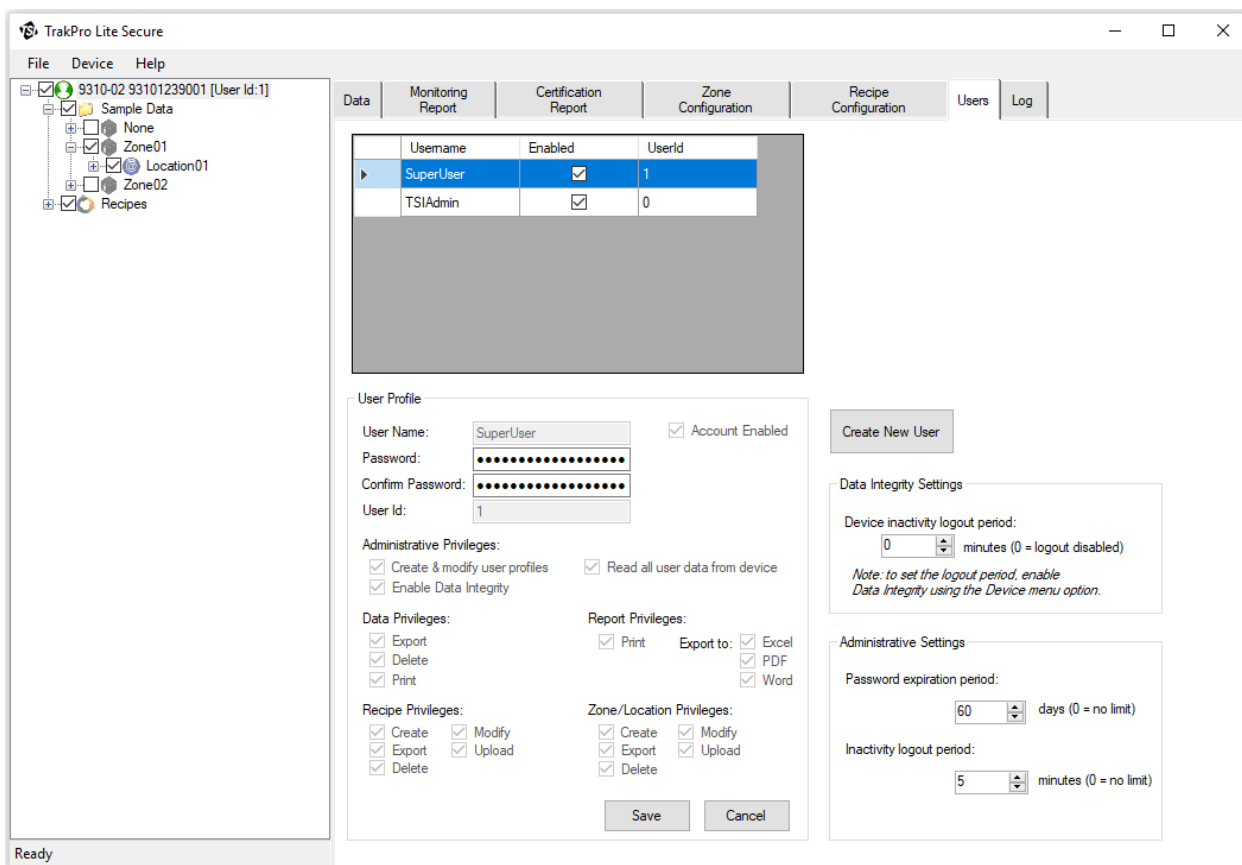
Option	Description
Device	The model number and serial number of the instrument (read-only).
Name	The name of the recipe.
Mode	The options are Auto, Manual or Beep. Refer to the device manual for a complete description.
Summing	The options are Differential (Δ) or Cumulative (Σ). Refer to the device manual for a complete description. Summing is disabled for instruments with only one channel.
Units	Options are #, #/ft ³ , and #/m ³ . The option "µg/m ³ " is available for the AeroTrak Model 9306 only.

Option	Description
Assigned	A list of the zones that are configured to use this recipe. This feature is only available for instruments that support Zones.
Start Delay	Indicates how long it will be before the first sample is taken.
Sample Time	Indicates how long the instrument will run for each sample.
Hold Time	Indicates how long the instrument pauses between samples.
Cycles	The total number of samples to be collected min = 0, max = 100000.
Volume	Units for display. Options are ft ³ , m ³ or liters.
Enable	The box is checked if the channel size is enabled.
Size	If variable bin sizes are supported, the channel size can be adjusted. The size may be adjusted to within the lower and upper bounds of the next lower channel size and the next higher channel size. Refer to the device manual for a complete description.
Alarm	This box is checked if the channel alarm is enabled.
Threshold / T-CNT Threshold	The alarm threshold value. Displays "T-CNT Threshold" for a BioTrak counter (for Total Count channels); and "Threshold" for an AeroTrak [®] particle counter.
Alarm	For a BioTrak counter, an additional channel alarm and "V-CNT Threshold" (for Viable Count channels) columns follow. These values are for channels 7 to 12.
Delete	Deletes the recipe from the instrument configuration.
Add New	Initializes the default recipe settings and puts the cursor in the "Name" field. A default name of "Recipe" plus the current date and time is used. The tree view is updated and the configuration information is saved locally. The recipe must be uploaded to the device by pressing Upload Changes when finished.
Upload Changes	Uploads the selected recipe to the device.
Cancel Changes	Changes that were made to the recipe are reversed. The configuration values for the recipe are restored to their original values.

User Tab

This screen displays the valid users for this application. The tab is only displayed when the logged in user is the “SuperUser” or has administrative privileges to modify users and preferences.

Any user with “Can Modify Users/Preferences” privilege can create and modify users. To keep the log accurate there is no option to delete a user. Users can only be disabled.



Each user has individually assigned privileges that let them execute certain functions in the application. Based on these privileges, the application enables/disables menu items, tab pages, and other features.

TSI[®] Incorporated recommends a *single* user name for each person. This assures that all actions performed by that person are logged correctly and maintains a full record of the user's actions.

To create a new user, log in as either SuperUser or as any user who has “Can Modify Users/Preferences” privilege.


Click on **Create New User** to populate default fields and then set up privileges and a password as described in the following paragraphs. TrakPro™ Lite Secure software **does not** allow multiple users with the same name.

NOTE

All user names and passwords are case sensitive.

Administrative Privileges and Settings

Option	Description
User	
User Name	Enter the name of the user.
New Password	Enter a password for the user; the user cannot change the password unless they have administrative privileges.
Confirm Password	Reenter the password.
User Id	Enter a unique User Id number to between 2 and 65535 for the user
Save	Use this button after ALL the privileges are modified and/or selected and you are ready to save the new user.
Cancel	Use this button if you do not want to save the new user profile.
Administrative Privileges	
Account Enabled	Specifies if the user is currently enabled or disabled. This flag is used to allow/disallow a user from logging into TrakPro Lite Secure software.
Create & Modify User Profiles	Gives the user administrative privileges to do such things as: creating/modifying users, setting password expiration, and logout periods.
Read all User Data from Device	Gives the user the ability to read the data from a user locked unit in data integrity mode.
Enable Data Integrity	Allows user to place instrument in and out of data integrity mode.
Data Privileges	
Can Export	Export or save data to an XML file format.
Can Print	Print a report.
Can Delete from the Device	Delete data from the device.
Report Privileges	
Print	Allows the user to print reports to printer.
Excel	Allows the user to export reports in Microsoft® Excel® spreadsheet format.
PDF	Allows the user to export reports in PDF format.
Word	Allows the user to export reports in Microsoft® Word® document format.
Zone/Location Privileges	
Can Export	Export or save zones and locations from the device to an XML file format.
Can Create	Create new zones/locations on the device (in order to update the device the user must also have the "Can Upload" privilege assigned).

Option	Description
Can Modify	Modify existing zones/locations on the device (in order to update the device the user must also have the “Can Upload” privilege assigned).
Can Delete	Delete existing zones/locations on the device (in order to update the device the user must also have the “Can Upload” privilege assigned).
Can Upload	Upload zone/location changes to the device.
Recipe Privileges	
Can Export	Export or save recipes from the device to and XML file format.
Can Create	Create new recipes on the device (in order to update the device the user must also have “Can Upload” privileges assigned). This function also requires the “Can Modify” privilege, and if not assigned, the application displays an error message and an option to fix this dependency. 
Can Modify	Modify existing recipes on the device (in order to update the device the user must also have the “Can Upload” privilege assigned).
Can Delete	Delete existing recipes on the device (in order to update the device the user must also have the “Can Upload” privilege assigned).
Can Upload	Upload recipe changes to the device.
Administrative Settings	
Password expiration period	Set the length of time a password will be valid before it expires. 0 indicates no limit.
Inactivity logout period	Set the length of time that will pass before a user is automatically logged out there is no user activity. 0 indicates no limit.
Data Integrity Settings	
Device inactivity logout period	Set the length of time after a sample is completed on the instrument before the user would have to input their password to take another sample.

After adding a user account, press **Save** when all changes are done. The username is added to the list of users and the privileges for that username are indicated under the appropriate headings.

NOTE
If you are only modifying administrative settings, you DO NOT need to press the Save button.

Log Tab

The Log Tab displays the events generated by user actions as required by 21 CFR Part 11; it is viewable only to a user with administrative privileges.

In order to maintain security and data integrity, all users' actions are logged into the Action Log that can be viewed through the Log Tab of the application.

Use the Start Date: and End Date: fields at the bottom of the window to narrow the timeframe of interest. The log will become quite large over time.

Click **Print** to open a printer selection window and print out the records of the selected timeframe.

An example of the log is shown below.

The screenshot shows the TrakPro Lite Secure application window. The 'Log' tab is selected in the top navigation bar. The left sidebar shows a tree view of the application's structure, including 'Sample Data', 'Location01', and 'Recipes'. The main content area displays a table of log entries:

Username	Action	TimeStamp (dd/MM/yyyy)
SuperUser	User Login: SuperUser logged in. Id = 1	21/10/2019 2:43:40 PM
SuperUser	User Logout: SuperUser [Id:1 logged out.	21/10/2019 2:39:34 PM
SuperUser	Data integrity: DI Mode disabled on device 93...	21/10/2019 2:39:09 PM
SuperUser	User Login: SuperUser logged in. Id = 1	21/10/2019 1:24:01 PM
SuperUser	User Logout: SuperUser [Id:1 logged out.	21/10/2019 1:23:48 PM
SuperUser	Data Integrity:Sample records (all) deleted from...	21/10/2019 1:23:46 PM
SuperUser	User Login: SuperUser logged in. Id = 1	21/10/2019 1:16:23 PM
TrakPro Lite Secure,3.1.0,TSI ln	Too many failed login attempts by SuperUser a...	21/10/2019 1:08:31 PM
TrakPro Lite Secure,3.1.0,TSI ln	Too many failed login attempts by SuperUser a...	21/10/2019 10:58:12 AM
SuperUser	User Logout: SuperUser [Id:1 logged out.	21/10/2019 10:57:18 AM
SuperUser	App Settings: User idle timeout changed to: 0	21/10/2019 10:54:35 AM
SuperUser	App Settings:Password expiration period chan...	21/10/2019 10:54:35 AM
SuperUser	Data Integrity:Idle timeout set to 1 minutes.	21/10/2019 10:54:35 AM
TrakPro Lite Secure,3.1.0,TSI ln	User Create: User SuperUser account created.	21/10/2019 10:54:33 AM
SuperUser	User Login: SuperUser logged in. Id = 1	21/10/2019 10:54:33 AM

At the bottom of the window, there are two date selection fields: 'Start Date (dd/MM/yy): 21/09/2019' and 'End Date (dd/MM/yy): 22/10/2019'. A 'Print' button is located to the right of these fields.

(This page intentionally left blank.)

CHAPTER 3

Device Connection

TrakPro™ Lite Secure software is capable of connecting to multiple AeroTrak® Airborne Particle Counters and BioTrak® Real-Time Viable Particle Counters.

Make certain devices are fully powered on before connecting them to the computer and starting the software.

If an AeroTrak® Airborne Particle Counter 9303 is being used, simply connect the device to the computer after it has initialized and TrakPro™ Lite Secure software will automatically detect the instrument and begin downloading sample records and configuration. **DO NOT** use the **Device | Connect** menu for this instrument.

For all other particle counters, use the [Device | Connect](#) menu option. Once connected, the software identifies the device type and initiates records download as well as download of zones, location names and recipes (if supported by the specific device). **Make certain the device is fully powered on and initialized before establishing a connection.** This ensures faster response time and fewer connection errors.

Once the connection is established, the device configuration and sample records are displayed in the left application pane (*see figure below*).

TrakPro Lite Secure

File Device Help Date Format: dd/MM/yyyy

9303-0193031249004

- Sample Data
 - Records
 - 1
 - 9500-01-95001152010
 - Sample Data
 - None
 - Zone5
 - Zone1
 - Zone2
 - Zone4
 - Reg165
 - Recipes

Data | Report Generation | Zone Configuration | Recipe Configuration | Users | Log

1 of 1 | Find | Next | Filter | # ft³ m³ Lit

Model: 9500-01 **Serial:** 95001152010

Count Mode: Σ **Units:** # / m³ **Temperature:** °C

Number of Samples: 4

Channel	Min	Max	Average	Std. Dev.	Std. Err
0.5 μm	273630	323250	293150	22126.74	11063.3
0.7 μm	116950	164770	136282.5	20858.17	10429.0
1 μm	80030	125240	98305	19833	9916.8
3 μm	26510	47030	34160	9543.44	4771.72
5 μm	15660	27010	19900	5298.31	2649.19
10 μm	5610	8760	7177.5	1481.16	740.58

#	Zone	Location	Date & Time	Device Status	Sample Time	Ch1 0.5μm	Ch2 0.7μm	Ch3 1μm	Ch4 3μm	Ch5 5μm	Ch6 10μm	Flow Status
1	Zone1	Location01	01/11/2016 12:49:28	OK	00:01:00	273630	116950	80030	26510	16060	6270	OK
2	Zone1	Location01	01/11/2016 12:50:53	OK	00:01:00	295790	137950	100420	35760	20870	8070	OK
3	Zone1	Location01	01/11/2016 12:52:11	OK	00:01:00	323250	164770	125240	47030	27010	8760	OK
4	Zone1	Location01	01/11/2016 12:53:48	OK	00:01:00	279930	125460	87530	27340	15660	5610	OK

Ready

CHAPTER 4

Troubleshooting

If the connection is broken or the device stops responding during data transfer, TrakPro™ Lite Secure software displays only the data that has been received up to that point.

The Model 9303 AeroTrak® Airborne Particle Counter will not generate an application error when there is a broken connection. Other models such as the Model 9306 will display an error message. This is due to the nature of communication between devices and TrakPro™ Lite Secure software.

On all devices except for the Model 9303, when the application closes or the user logs out, TrakPro™ Lite software releases the device front panel. In the event that the application aborts or the connection is lost, the device front panel may remain locked.

Solution

Power-cycle the instrument and restart the application.

(This page intentionally left blank)

CHAPTER 5

Contacting Customer Service

If difficulty setting up or operating the TrakPro™ Lite Secure software is encountered, contact an applications engineer at TSI® Incorporated, 1-800-680-1220 (USA) or (651) 490-2860 or e-mail technical.services@tsi.com.

International Contacts

Technical Support

TSI Instruments Singapore Pte Ltd

150 Kampong Ampat
#05-05 KA Centre
Singapore 368324

Telephone: +65 6595-6388
Fax: +65 6595-6399
E-mail: tsi-singapore@tsi.com

TSI Instrument (Beijing) Co., Ltd.

Room 3A04, Yingu Tower,
No.9, North 4th Ring West Road,
Haidian District, Beijing, 100190
CHINA

Telephone: +86-10-8219 7688
Fax: +86-10-8219 7699
E-mail: tsibeijing@tsi.com

TSI GmbH

Neuköllner Strasse 4
52068 Aachen
GERMANY

Telephone: +49 241-52303-0
Fax: +49 241-52303-49
E-mail: tsigmbh@tsi.com

TSI Instruments Ltd.

Stirling Road
Cressex Business Park
High Wycombe, Buckinghamshire
HP12 3ST
UNITED KINGDOM

Telephone: +44 (0) 149 4 459200
Fax: +44 (0) 149 4 459700
E-mail: tsiuk@tsi.com

TSI France Inc.

Hotel technologique
BP 100
Technopôle de Château-Gombert
13382 Marseille cedex 13
FRANCE

Telephone: +33 (0)1 41 19 21 99
Fax: +33 (0)1 47 86 00 07
E-mail: tsifrance@tsi.com



UNDERSTANDING, ACCELERATED

TSI Incorporated – Visit our website www.tsi.com for more information.

USA	Tel: +1 800 680 1220	India	Tel: +91 80 67877200
UK	Tel: +44 149 4 459200	China	Tel: +86 10 8219 7688
France	Tel: +33 1 41 19 21 99	Singapore	Tel: +65 6595 6388
Germany	Tel: +49 241 523030		

P/N 6004404 Rev. J

©2021 TSI Incorporated

Printed in U.S.A.

