

PERSONAL IMPACTORS MODEL 200

The Model 200 Personal Impactor is a lightweight personal sampler for collecting airborne particles in the PM_{2.5} and PM₁₀ size ranges. PM_{2.5} and PM₁₀ particles are airborne particles less than 2.5 μm and 10 μm , respectively. They are frequently used to provide a measure of airborne particle concentration for studying potential health effects of airborne particles in the indoor and outdoor environment.

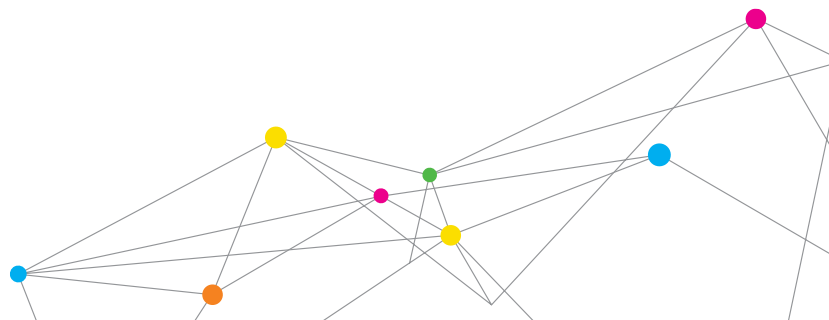


How it Works

The aerosol sample enters the model through a multi-nozzle, single-stage impactor to remove particles with aerodynamic equivalent diameter larger than 2.5 μm or 10 μm in diameter. Particles smaller than the impactor cut-size are collected on a 37mm diameter filter of choice. The collected particles can be analyzed gravimetrically to determine the airborne particle mass or analyzed for specific chemical compounds.

Features and Benefits

- + Lightweight, personal sampler with single stage impactor and final filter
- + Impactor cut-point of 2.5 or 10 μm
- + Can be operated with a personal sampling pump



SPECIFICATIONS

PERSONAL IMPACTORS MODEL 200

Applications

- + Personal PM2.5 or PM10 sampling for exposure assessment
- + Indoor/outdoor air pollution studies
- + Indoor/outdoor air quality assessment
- + Personal sampling for industrial hygiene applications

Filter diameter

37 mm

Dimensions

60 X 65 X 22 mm (H x D x W)

Weight

48 g (1.7 oz.)

Personal Impactors

Part Number	Model Number	Flow Rate (L/min)	Cut Point (µm)	Color	Pressure Drop* (in wg)
0200-01-1001	PEM-2-2.5	2	2.5	Blue	1.37
0200-01-1003	PEM-4-2.5	4	2.5	Black	2.73
0200-01-1005	PEM-10-2.5	10	2.5	Red	6.83
0200-01-1002	PEM-2-10	2	10	Green	1.37
0200-01-1004	PEM-4-10	4	10	Gold	2.73
0200-01-1007	PEM-10-10	10	10	Orange	6.83

*Vacuum measured at hose-barb with glass fiber filter in place

Accessories

Part Number	Description
0200-01-5000	Calibration, Cap Assembly with Tap
0200-01-5001	Calibration, Cap Assembly w/o Tap
0200-81-1123	Nozzle Cap gasket (Set of 5)
0200-81-0017	SS Screen Filter Support, 37 mm
0200-98-0038	Clamping Fixture Assembly
0135-01-5203	Glass Fiber Filters, Qty 500, 37 mm



The MSP logo is a registered trademark of MSP Corporation.
TSI and the TSI logo are registered trademarks of TSI Incorporated.



MSP - Visit our website www.msppcorp.com for more information.

5910 Rice Creek Parkway, Suite 300
Shoreview, Minnesota
55126, U.S.A.
Tel: 651.287.8100