

MSP TURBO™ VAPORIZER MODEL 2840PE

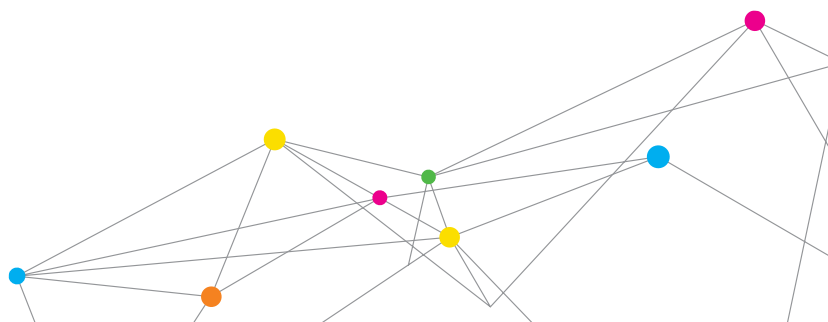


MSP Turbo™ Vaporizer 2840PE is one of our smallest vaporizers and has the state-of-the-art PE atomizer with on-board flow control. This model has been optimized for low flow applications; featuring an ultra-fast response time making it a great choice for ALD applications.

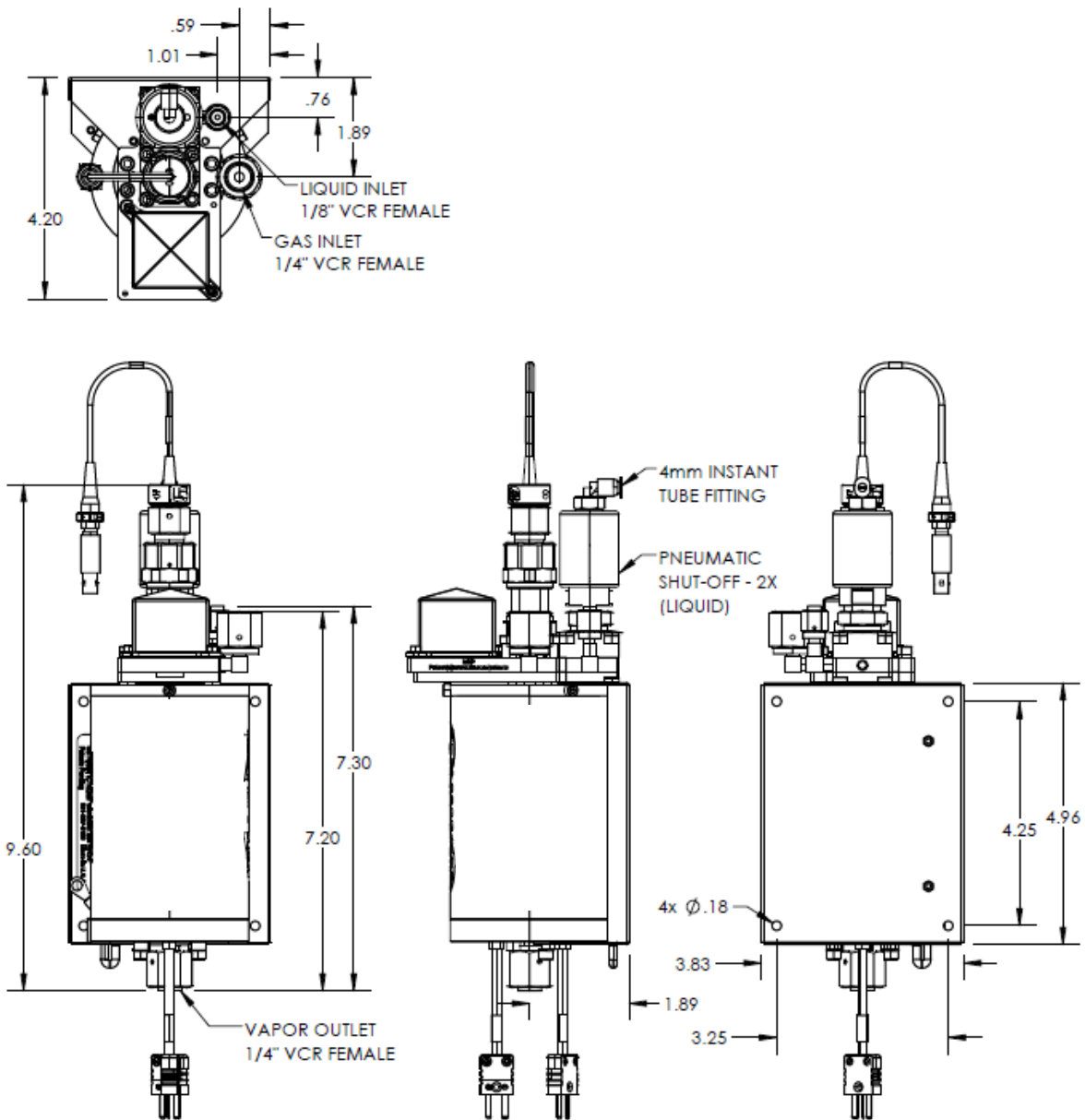
| | |
|--|--|
| Dimensions: | 9.6 inch x 3.8 inch x 4.2 inch (244 mm x 97 mm x 107 mm) |
| Weight: | 7.2 lb (3.3 kg) |
| Fittings (on the unit): | |
| Carrier Gas Inlet: | 1/4 inch VCR female split nut |
| Liquid Inlet: | 1/8 inch VCR female |
| Vapor Outlet: | 1/4 inch VCR female |
| Compressed Air | 4 mm instant tube fitting |
| Wetted Parts: | SS 316, PEEK, PCTFE, Elgiloy®, Kalrez®, PTFE |
| Leak Integrity: | $\leq 1 \times 10^{-9}$ Pa·m ³ /s Helium |
| Heater Power Requirements: | 110 VAC, 60 Hz, 300W |
| Carrier Gas: | Inert gas recommended |
| Max Carrier Gas Flow¹: | 8.5 standard liters/min N ₂ (@70 psig inlet pressure) |
| Max Liquid Flow²: | 720 g/hr. (TEOS or equivalent) 60 g/hr (H ₂ O or equivalent) |
| System Pressure Limit: | 120 psig |
| Compressed Air: | 90 to 110 psig |
| Temperature Range: | 40° C to 160° C, 160° C to 200° C with optional piezo cooling package |
| Vaporizer Body: | Vacuum tight chamber with multi-stage heat exchanger, SS 316 construction |
| Temperature sensor: | 2 type K thermocouples |

¹Up to 15 standard L/min available.

²Max. liquid flow is process dependent. The spec assumes a vaporizer temperature of 180° C or higher, Ar carrier gas from 4-7 SLPM, and pressure <50 Torr immediately downstream of the vaporizer.



MSP TURBO™ VAPORIZER MODEL 2840PE



All specifications are subject to change without notification.

MSP Turbo Vaporizer is a trademark, and MSP, the MSP logo and TSI are registered trademarks of TSI Incorporated.



MSP - Visit our website www.tsi.com/msp for more information.

5910 Rice Creek Parkway, Suite 300
 Shoreview, Minnesota
 55126, U.S.A.
Tel: 651.287.8100