

# PORTACOUNT<sup>®</sup> PRO/PRO+ RESPIRATOR FIT TESTER

## QUICK START GUIDE

This guide will help you to quickly begin using your PortaCount<sup>®</sup> Pro /Pro+ Respirator Fit Tester for first time use with a personal computer.



### 1. Software Installation

Install the FitPro+<sup>™</sup> Fit Test software on your computer (for further instructions, please see the *FitPro+ Fit Test Software User's Manual*, included on the FitPro+ Software CD in pdf format).



### 2. Initial PortaCount Pro/Pro+ Respirator Fit Tester Start-Up

Plug the PortaCount Pro fit tester into an AC power source. Press the **On/Off** button to turn the PortaCount Pro fit tester on.



Refer to the [Interactive Training Tutorial](#) and PortaCount Academy [Online Training Center](#) website ([www.tsi.com/pcacademy](http://www.tsi.com/pcacademy)) to learn about other necessary components and procedures, such as when to install the Alcohol Cartridge and how to perform the Daily Checks.

### 3. Communications Setup

After the PortaCount Pro fit tester has completed its initial warm up, connect the USB cable from the PortaCount Pro fit tester to your computer.

Connect the “USB-A” connection to the computer, the “USB-B” connection to the PortaCount Pro fit tester.



USB-A Female  
(Chassis Mount)



USB-A Male



USB-A Male Plug  
(Side View)



USB-B Female



USB-B Male



USB-B Male Plug  
(Side View)

### 4. Device Driver Installation

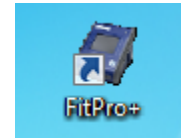
Microsoft<sup>®</sup> Windows<sup>®</sup> 7, 8, and 10 operating system: Device drivers install automatically during software installation.



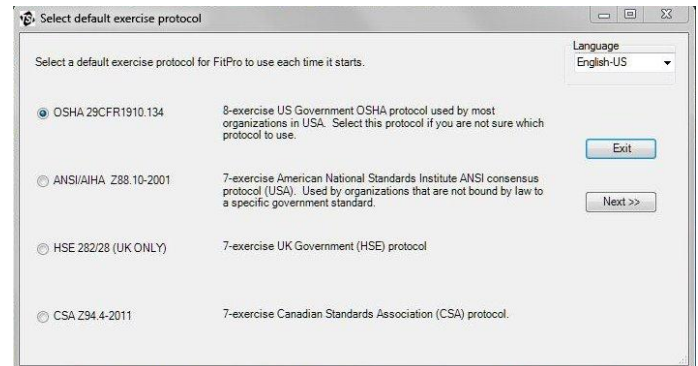
If the Wizard does not start automatically, or drivers do not install as described, refer to the RESFT 105: PortaCount Pro-to-PC Communications instructional course located at the PortaCount Academy [Online Training Center](#) website: [www.tsi.com/pcacademy](http://www.tsi.com/pcacademy).

### 5. FitPro+ Software Start-Up

Start the FitPro Fit Test software.

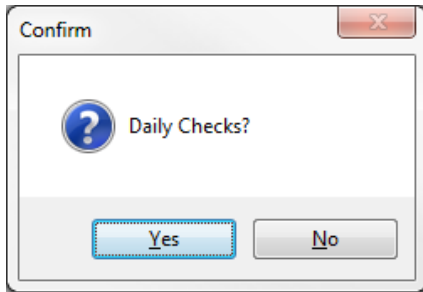


If prompted, select the appropriate default exercise protocol that your organization follows for fit testing. For example: “OSHA 29CFR1910.134”. Click **Next>>**.



## 6. Verify Communications

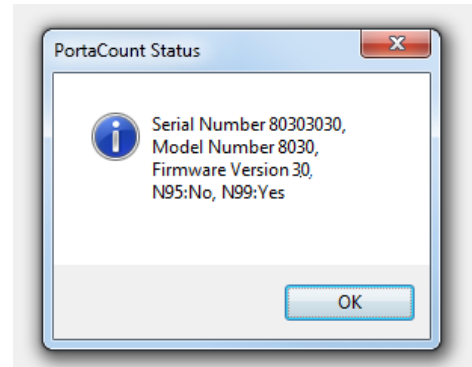
- a. To verify successful PortaCount Pro-to-Computer communications, when prompted to perform Daily Checks, click **No**.



*Be sure to go back and perform the Daily Checks before fit testing.*

- b. Go to **Setup | PortaCount Communication** menu.

- c. Select the appropriate PortaCount Pro Module Type: "PortaCount 8030/8038 Fit Test Driver."
- d. Click **Select**.
- e. Verify that the PortaCount Fit Tester is connected. A message similar to the one shown below should display.



---

## Further Learning

You are now ready to learn about the daily operations of the PortaCount Pro Respirator Fit Tester and FitPro+ software. Refer to the PortaCount Pro Fit Tester Operation and Service manual, the FitPro+ Fit Test Software manual. These manuals are included in PDF format on the FitPro+ Software Installation CD and are available for download from the TSI website: [www.tsi.com/portacount](http://www.tsi.com/portacount).

For further training on PortaCount Pro Respirator Fit Testing refer to the PortaCount Academy website at [www.tsi.com/pcacademy](http://www.tsi.com/pcacademy).



UNDERSTANDING, ACCELERATED

TSI Incorporated – Visit our website [www.tsi.com](http://www.tsi.com) for more information.

USA Tel: +1 800 874 2811  
UK Tel: +44 149 4 459200  
France Tel: +33 1 41 19 21 99  
Germany Tel: +49 241 523030

India Tel: +91 80 67877200  
China Tel: +86 10 8219 7688  
Singapore Tel: +65 6595 6388