



Setup Guide (US)

---

---

### Contents

<b>Contents</b> .....	1
<b>Overview</b> .....	1
<b>Prerequisites</b> .....	1
<b>How to Use the Layout View</b> .....	2
Opening the Layout View .....	2
Selecting an Image .....	2
Placing the Markers and Data on the Layout View .....	3
Inserting the Layout View into the Report Creator .....	4
<b>Pictures in the Layout View</b> .....	5

---

---

### Overview

The Layout View is a feature within many different TSI Link<sup>™</sup> Report Creator Worksheets. It provides a spatial representation of your study, showing how your readings vary across the floor plan, around a specific work area, or along your fence line.

---

---

### Prerequisites

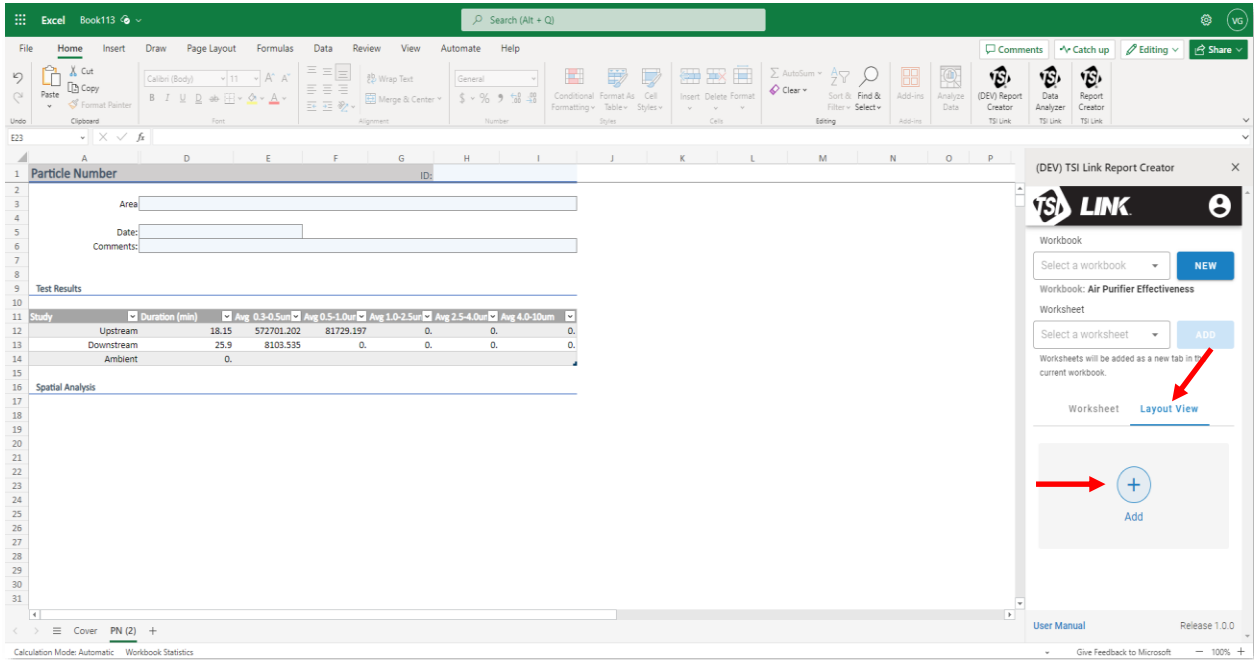
Using the Layout View requires:

- TSI Link<sup>™</sup> user account, i.e. a login and password
- TSI Link<sup>™</sup> Report Creator subscription
- TSI Link<sup>™</sup> Report Creator Microsoft<sup>®</sup> Excel<sup>®</sup> Add-in
- Data from a compatible TSI<sup>®</sup> device Loaded into a Report Creator Worksheet.

# How to Use the Layout View

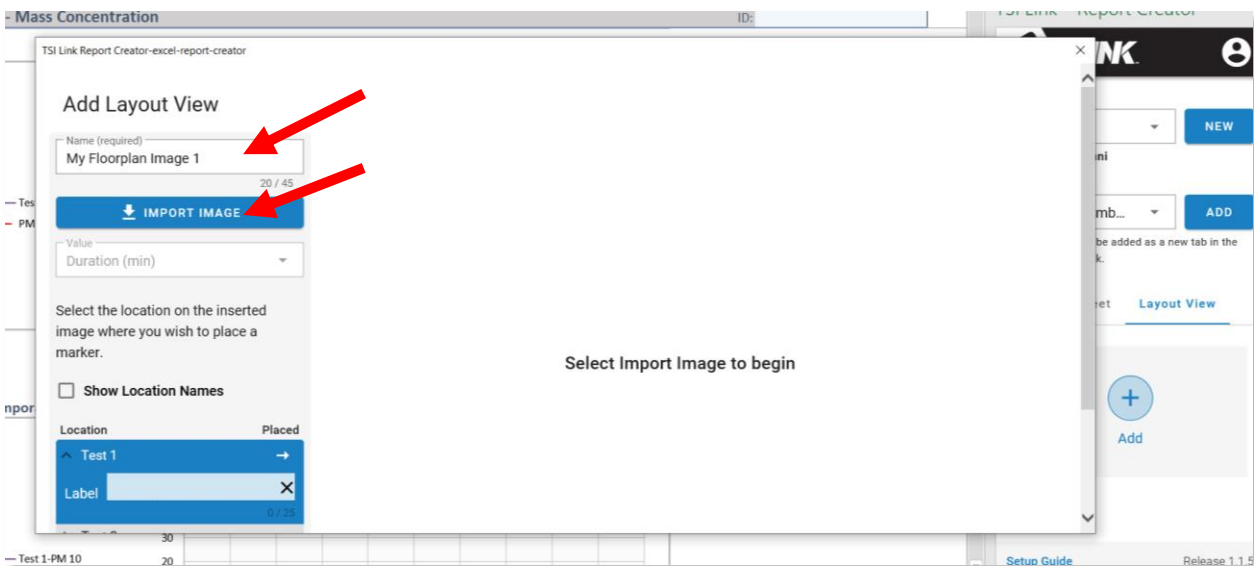
## Opening the Layout View

By selecting the **Layout View** and using the **Add (+)** button a visualization of the data can be included in the worksheet.

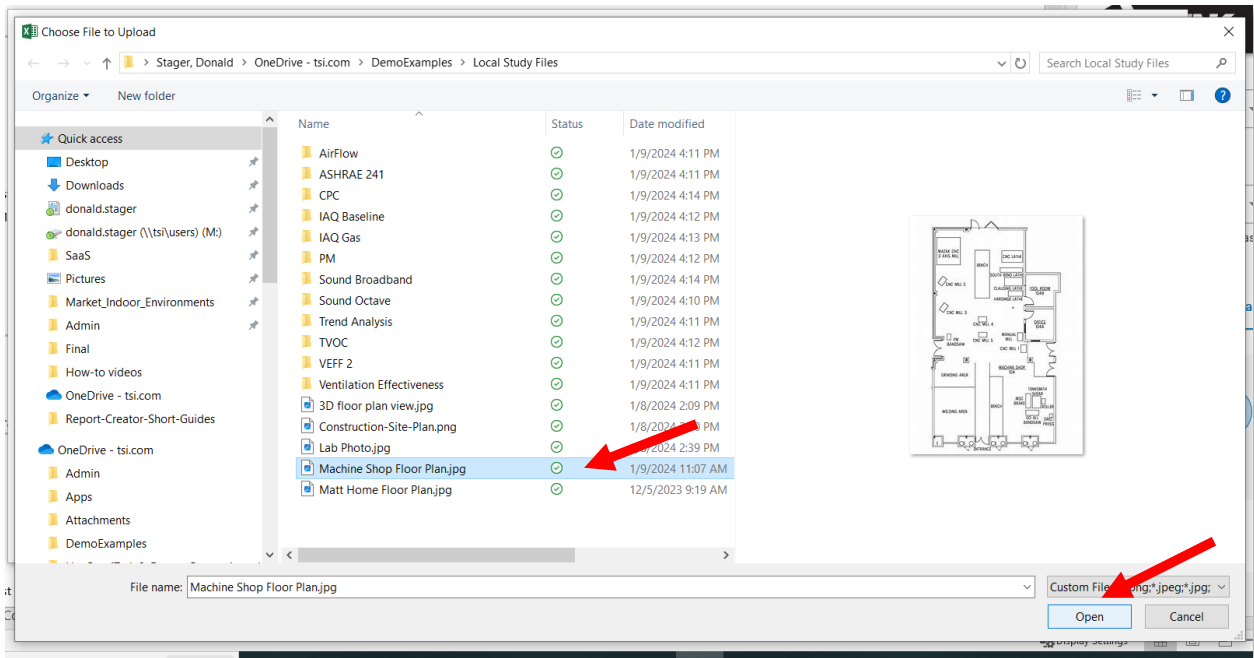


## Selecting an Image

A new dialog is opened. Update the Name of the Layout View and use the **IMPORT IMAGE** button to select a file.



After using the **IMPORT IMAGE** button, a file picker will appear to help select an image file

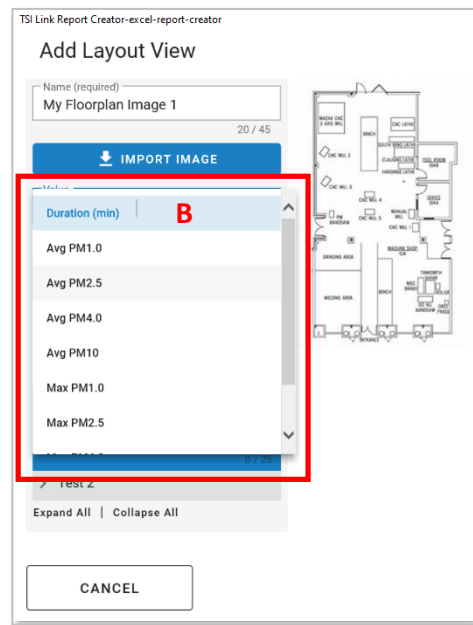
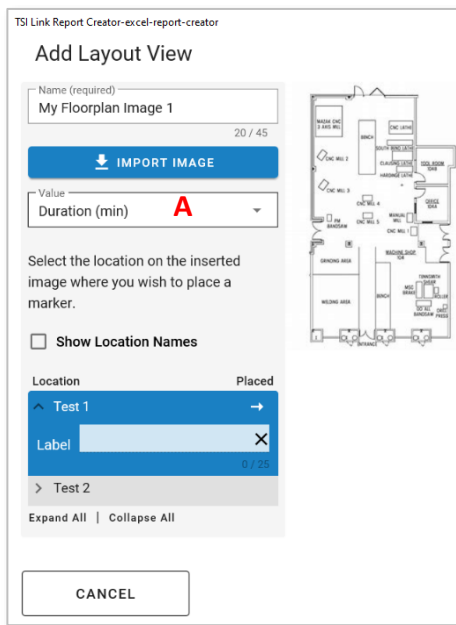


## Placing the Markers and Data on the Layout View

Choose the metric you want to display on the layout view via:

A - Drop down Menu

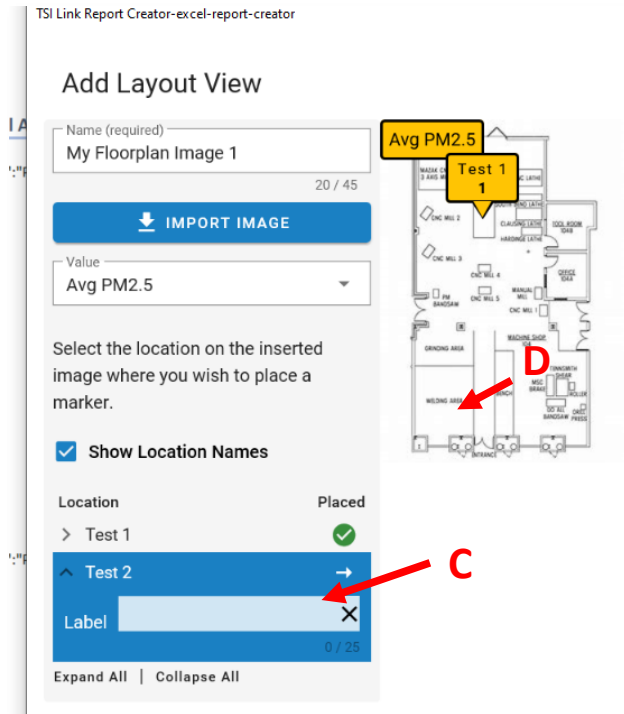
B – Scrolling to choose the desired metric



Place the individual Tests:

C – Choose Test

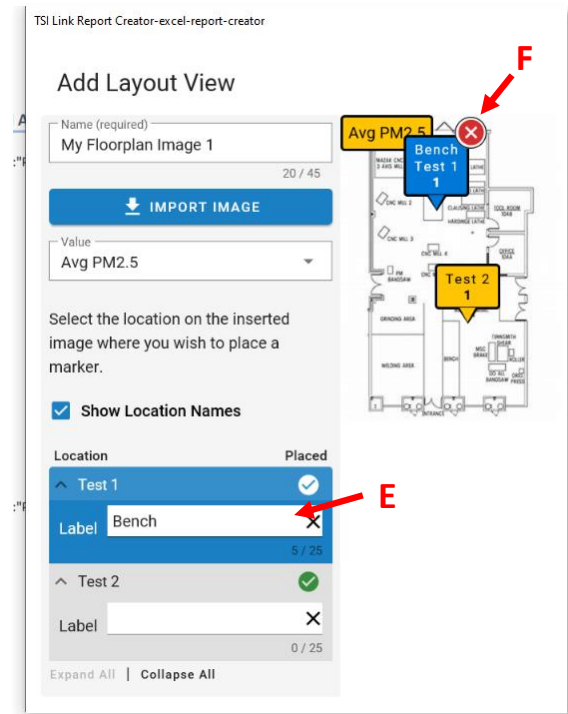
D – Click on where image where you want the Marker



After the marker has been place it can be:

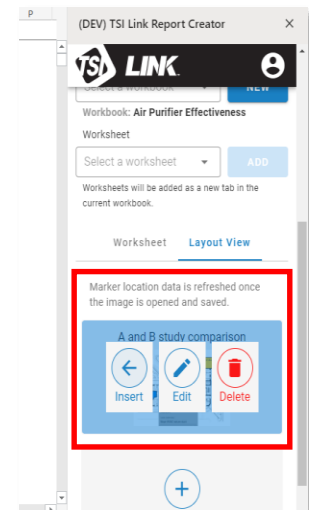
E – Labeled

F – Deleted, for example if the location is not quite right

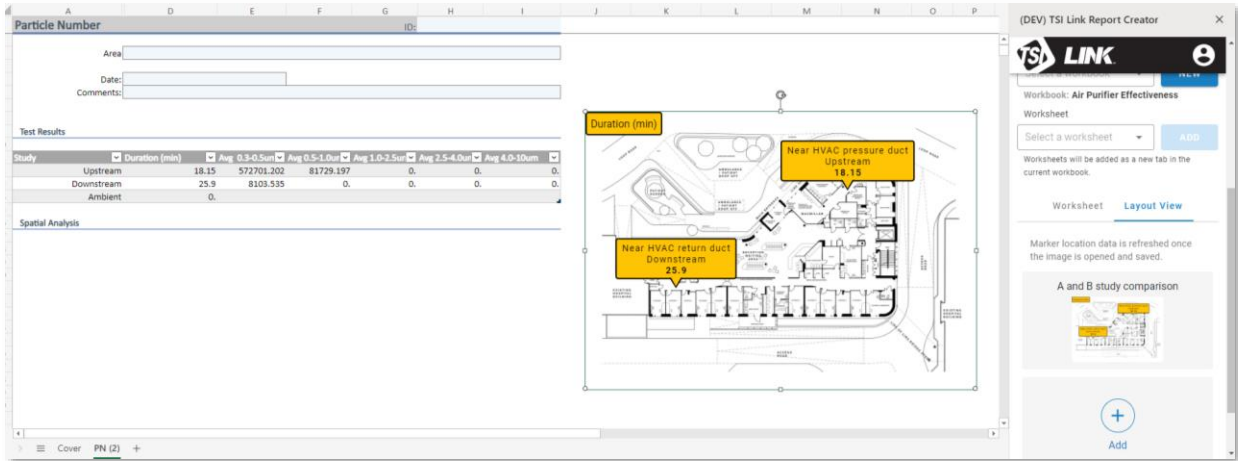


## Inserting the Layout View into the Report Creator

The image with the marker locations can then be inserted into the worksheet template. It can also be edited or deleted.

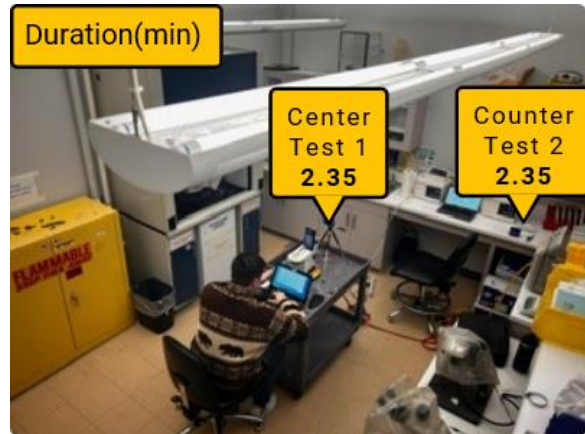


The image can be moved within the worksheet by clicking on it, holding down the mouse button and dragging it to the desired location.



## Pictures in the Layout View

Provide another strong representation.



TSI and the TSI logo are registered trademarks of TSI Incorporated in the United States and may be protected under other country's trademark registrations. Microsoft, Windows and Excel are registered trademarks of Microsoft Corporation.



**Knowledge Beyond Measure.**

TSI Incorporated – Visit our website [www.tsi.com](http://www.tsi.com) for more information.

USA Tel: +1 800 680 1220  
 UK Tel: +44 149 4 459200  
 France Tel: +33 1 41 19 21 99  
 Germany Tel: +49 241 523030

India Tel: +91 80 67877200  
 China Tel: +86 10 8219 7688  
 Singapore Tel: +65 6595 6388